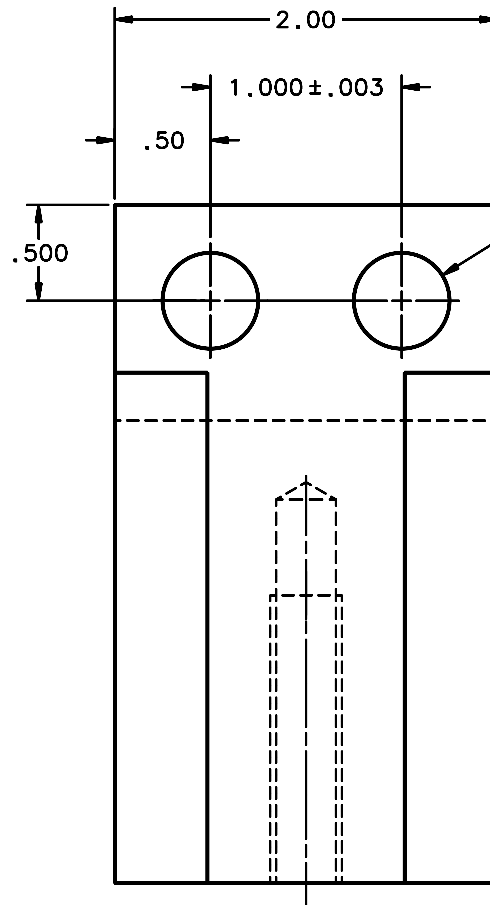
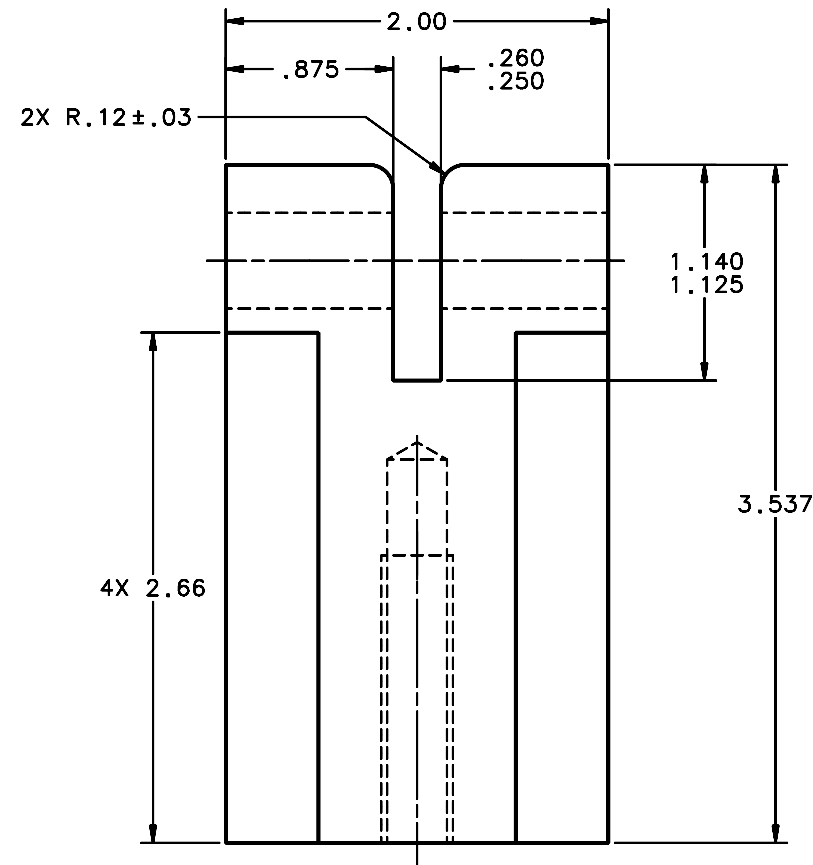
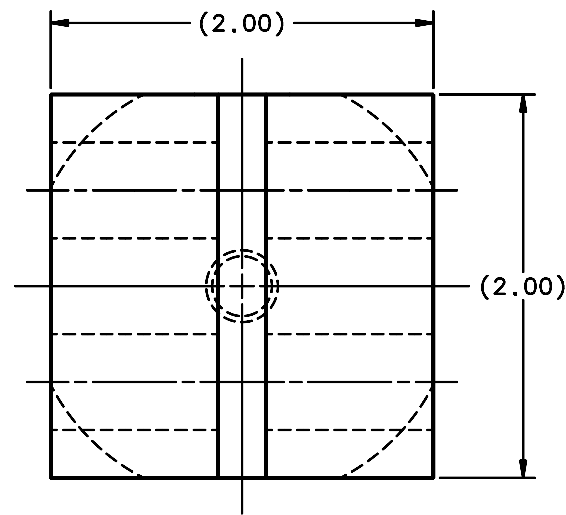
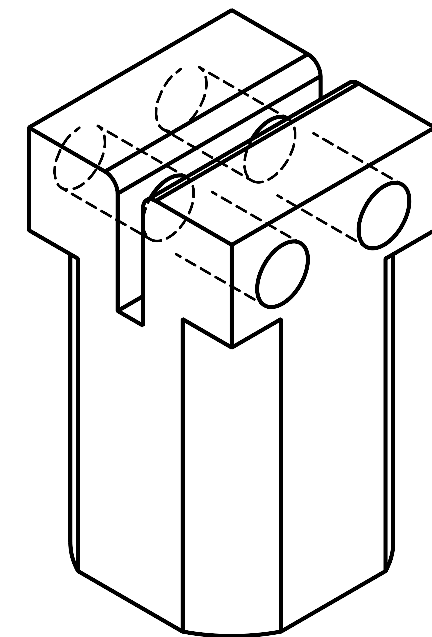


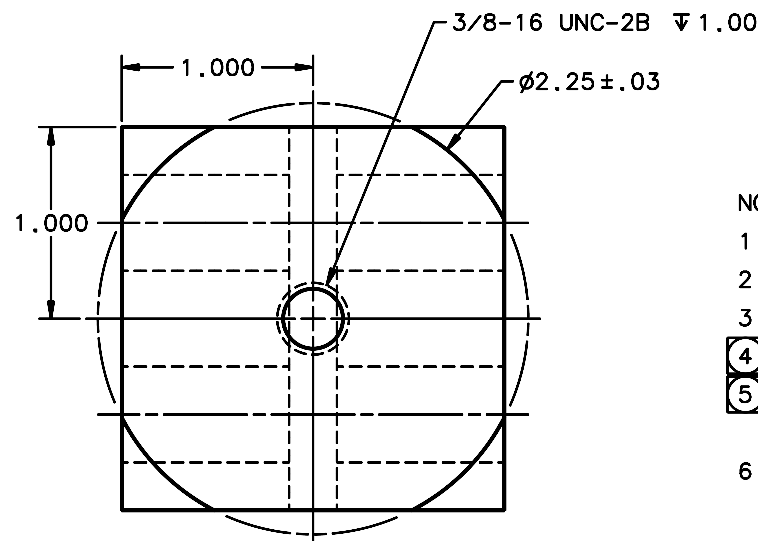
REVISIONS				
LTR	DESCRIPTION	DATE	REVISED BY	APPROVED
A	INITIAL RELEASE	11/17/05	R. NAGY	J. BECHTOLD



⑤  
2X  $\phi$  .5016  
.5000  
(RC6 WITH DWG NO.  
16065 & 16066)



ISO



SCALE 2:1

NOTES:

- BREAK SHARP EDGES & DEBURR.
- MACHINED SURFACE FINISH TO BE 125 RMS.
- MACHINED FILLETS TO BE .015 MAX.
- ④ ANODIZE PER MIL-A-8625, TYPE II, CLASS 2, BLACK.
- ⑤ NOTED HOLE SIZES ARE AFTER ANODIZE;  
ALL OTHER DIMENSIONS ARE BEFORE.
- QTY REQD: 2.

DO NOT SCALE DRAWING		THIS DRAWING CREATED IN:			Steward Observatory, University of Arizona				
INTERPRET DIMENSIONS AND TOLERANCES IN ACCORDANCE WITH ASME Y14.5M-94		ACAD	MECH	IDEAS	933 N. Cherry Avenue, Tucson, AZ 85721 (520)621-7659				
TOLERANCES UNLESS OTHERWISE SPECIFIED		<input type="checkbox"/>	<input type="checkbox"/>	<input checked="" type="checkbox"/>	DESIGNED BY: D. DEAN	DATE: 10/20/03	CATEGORY: MMT		
LINEAR					DRAWN BY: D. DEAN	11/3/03	PROJECT: MAESTRO		
ANGULAR					CHECKED BY: R. NAGY	11/14/05	TITLE: TRUSS SPACE FRAME TO WELDMENT FLEX CONNECTION BLOCK TYPE 5		
.X = NA					APPROVED: J. BECHTOLD	11/17/05			
.XX = ±.02					APPROVED:				
.XXX = ±.008					APPROVED:				
DIAMETRICAL SEE SPEC S-002					APPROVED:				
DIMENSIONS ARE IN INCHES / DIMENSIONS IN 1.1 ARE METRIC					APPROVED:				
MATERIAL 6061-T6 A1		16057	MMT-MAESTRO		APPROVED:		PLOT SIZE SCALE: D -	DRAWING NUMBER: 13311	REVISION: A
FINISH ④		NEXT ASSY	USED ON		CURRENT TIME/DATE/FILE LOCATION:				
ASSEMBLY APPLICATION					DRAWING ARCHIVE LOCATION: http://dovinc1.es.arizona.edu/ocod/default.html				