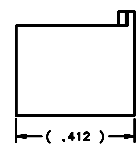
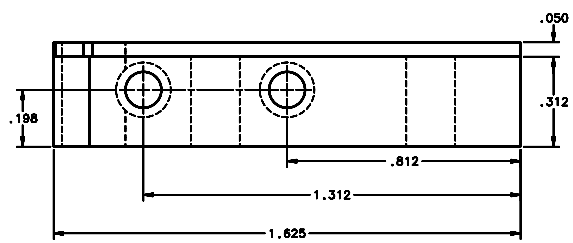
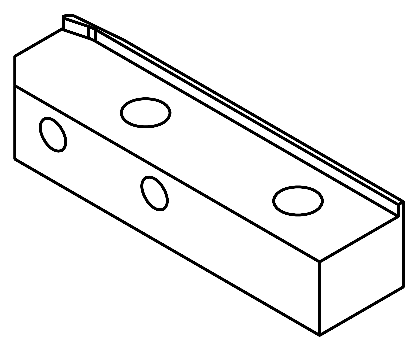
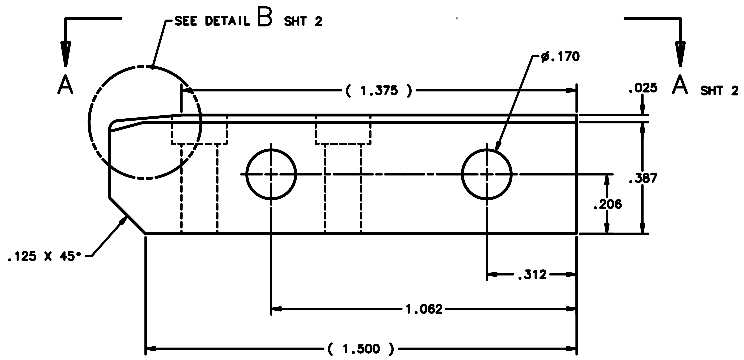


REVISIONS				
LTR	DESCRIPTION	DATE	REVIEWED BY	APPROVED
A	INITIAL RELEASE	05/04/05	J. BRENNAN	S. BEAN
B	ADDED HORIZONTAL DIMENSIONS TO HELIX	05/17/05	J. BRENNAN	S. BEAN



SCALE 6:1

- 1 REQUIRED
- NOTES:
1. BREAK SHARP EDGES & DEBURR.
 2. MACHINED SURFACE FINISH TO BE 125 RMS OR BETTER.
 3. MACHINED FILLETS TO BE R.015 MAX.
 4. ANODIZE PER MIL-A-8625, TYPE II, CLASS 2, BLACK.
 5. DIMENSIONS ARE PRIOR TO ANODIZING.

DO NOT SCALE DRAWING		THIS DRAWING CREATED IN:		Steward Observatory, University of Arizona	
UNLESS OTHERWISE SPECIFIED TOLERANCES IN ASSURANCE WITH ASSEY 14288-00		ASSEMBLY	ISSUE	933 N. Cherry Avenue, Tucson, AZ 85721 (520)621-7600	
TOLERANCES		DESIGNED BY	DATE	PROJECT: MAIT	
UNLESS OTHERWISE SPECIFIED		J. BRENNAN	05/04/05	PROJECT: MAESTRO	
FRACTIONAL DIMENSIONS		DRAWN BY	DATE	TITLE: SLIT HOLDER GUIDE BLOCK	
DECIMAL DIMENSIONS		D. BEAN	05/04/05		
DIMENSIONS ARE PRIOR TO ANODIZING		APPROVED BY	DATE		
		J. RECHTOLD	05/04/05		
MATERIAL		APPROVED BY	DATE	PART OR JOB NO:	
AL ALLOY 6061-T6		R. BARNER	05/04/05	D -	
FINISH: 4		NEXT ASSY USED ON	DATE	DRAWING NUMBER: 14810	
ASSEMBLY APPLICATION		APPROVED BY	DATE	REVISION: B	
		COPYRIGHT © 2005 STURTELL & SONS, INC.		SHEET 1 OF 2	