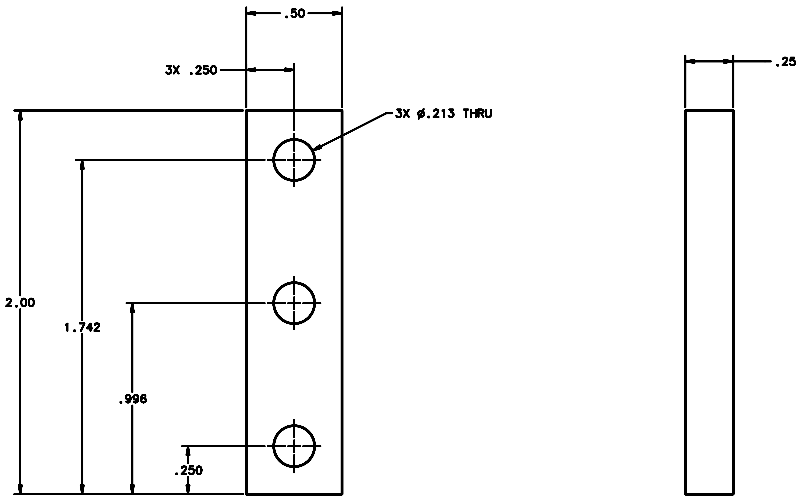


REVISIONS				
LTR	DESCRIPTION	DATE	REVIEWED BY	APPROVED
A	INITIAL RELEASE	03/28/04	J. BROWN	S. LANDIS



SCALE 4:1

- NOTES:
1. BREAK SHARP EDGES & DEBURR.
 2. MACHINED SURFACE FINISH TO BE 125 RMS OR BETTER.
 3. ANODIZE PER MIL-A-8625, TYPE II, CLASS 2 - BLACK.
 4. ALL DIMENSIONS APPLICABLE BEFORE ANODIZING.

DO NOT SCALE DRAWING		THIS DRAWING CREATED IN:		Steward Observatory, University of Arizona	
TOLERANCES UNLESS OTHERWISE SPECIFIED		ASAP	ASAP	933 N. Cherry Avenue, Tucson, AZ 85721 (520)621-7856	
TOLERANCES IN ACCORDANCE WITH ISO 2768-MS		<input type="checkbox"/>	<input type="checkbox"/>	<input checked="" type="checkbox"/>	
TOLERANCES		DESIGNED BY: D. DEAN		DATE: 06/27/04	PROJECT: MMT
UNLESS OTHERWISE SPECIFIED		DRAWN BY: G. ABALDO		DATE: 06/27/04	PROJECT: MAESTRO
LINES: REGULAR		CHECKED BY: G. LANDIS		DATE: 06/27/04	TITLE: INJECTION OPTICS MOUNTING BOX BLOCK RH
DIMENSIONS: .5" ± .005		APPROVED BY: M. REED		DATE: 06/27/04	
FINISH: SEE SPEC 9-008		APPROVED:			
MATERIAL: AL ALLOY 6061-T6		14200	MMT-MAESTRO	PLAT BY (BORG)	D -
FINISH: 3		NEXT ASSY USED ON	APPROVED:	DESIGN NUMBER: 14273	REVISION: A
ASSEMBLY APPLICATION:		COMPANY TOLERANCES/PLATE LOCATION:		SHEET 1 OF 1	