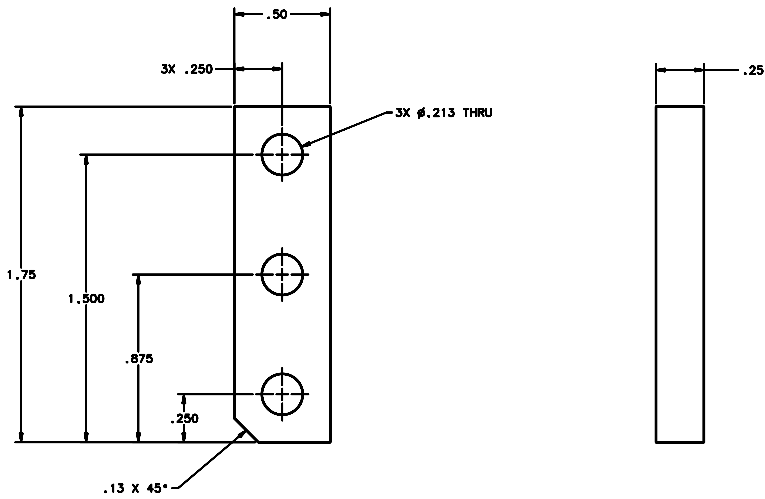


REVISIONS				
LTR	DESCRIPTION	DATE	REVIEWED BY	APPROVED
A	INITIAL RELEASE	03/28/04	J. BROWN	S. LAMB



SCALE 4:1

NOTES:

- BREAK SHARP EDGES & DEBURR.
- MACHINED SURFACE FINISH TO BE 125 RMS OR BETTER.
- ANODIZE PER MIL-A-8625, TYPE II, CLASS 2 - BLACK.
- ALL DIMENSIONS APPLICABLE BEFORE ANODIZING.

DO NOT SCALE DRAWING		THIS DRAWING CREATED IN:		Steward Observatory, University of Arizona	
TOLERANCES UNLESS OTHERWISE SPECIFIED		ASAP	ASAP	833 N. Cherry Avenue, Tucson, AZ 85721 (520)621-7856	
TOLERANCES IN ACCORDANCE WITH SPC 114, 114-S4		<input type="checkbox"/>	<input type="checkbox"/>	<input checked="" type="checkbox"/>	
UNLESS OTHERWISE SPECIFIED		DESIGNED BY: D. DEAN		DATE: 06/27/04	PROJECT: MMT
LINES: DIMENSIONAL		DRAWN BY: G. LANDIS		DATE: 06/27/04	TITLE: MAESTRO
DIMENSIONAL: SEE SPC 114		APPROVED BY: M. REED		DATE: 06/27/04	TITLE: INJECTION OPTICS MOUNTING BOX BLOCK LH
MATERIAL: AL ALLOY 6061-T6		14200	MMT-MAESTRO	PLAT BY: BORG	DRAWING NUMBER: 14272
FINISH: 3		NEXT ASSY USED ON:	APPROVED:	PLAT BY: BORG	REVISION: A
ASSEMBLY APPLICATION:		COMPANY TOLERANCES/PLATE LOCATION:		SHEET 1 OF 1	