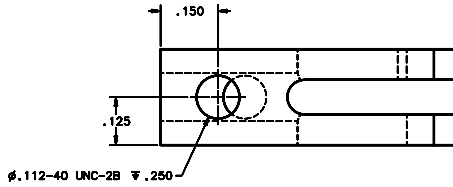
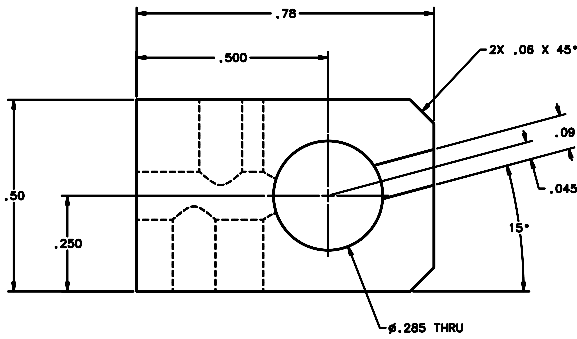
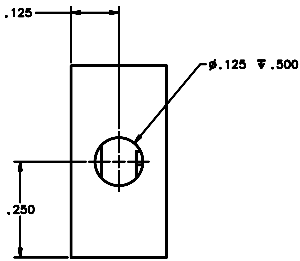
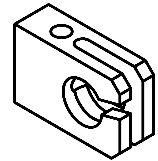


REVISIONS			
LTR	DESCRIPTION	DATE	REVIEWED BY / APPROVED
A	INITIAL RELEASE	03/28/04	J. DEAN / G. LANDIS



SCALE 8:1

- NOTES:
- BREAK SHARP EDGES & DEBURR.
 - MACHINED SURFACE FINISH TO BE 125 RMS OR BETTER.
 - ANODIZE PER MIL-A-8625, TYPE II, CLASS 2 - BLACK.
 - ALL DIMENSIONS APPLICABLE BEFORE ANODIZING.

DO NOT SCALE DRAWING		THIS DRAWING CREATED IN:		Steward Observatory, University of Arizona	
TOLERANCES UNLESS OTHERWISE SPECIFIED ARE IN ACCORDANCE WITH ASME Y14.5M-94		ASAP	ISO	933 N. Cherry Avenue, Tucson, AZ 85721 (520) 621-7856	
TOLERANCES		DESIGNED BY	DATE	PROJECT: MMT	
UNLESS OTHERWISE SPECIFIED		D. DEAN	06/27/04	DRAWN BY: MAESTRO	
FRACTIONS		DESIGNED BY	DATE	TITLE: SHUTTER CABLE END BLOCK	
DECIMALS		G. LANDIS	06/27/04	APPROVED BY: M. NEED	
MILS		M. NEED	06/27/04	PART OR BOM CODE: D -	
HUNDRETHS		APPROVED BY:		DRAWING NUMBER: 14262	
THOUSANDS		APPROVED BY:		REVISION: A	
MATERIAL		14262	MMT-MAESTRO	ASSEMBLY APPLICATION	
AL ALLOY 6061-T6		NEXT ASSY	USED ON	COMPANY TOLERANCES/PLATE LOCATION	
FINISH		ASSEMBLY APPLICATION		STANDARD ASSY/REV LOCATIONS: http://www.observatory.edu/maestro/label.html	
3				SHEET 1 OF 1	