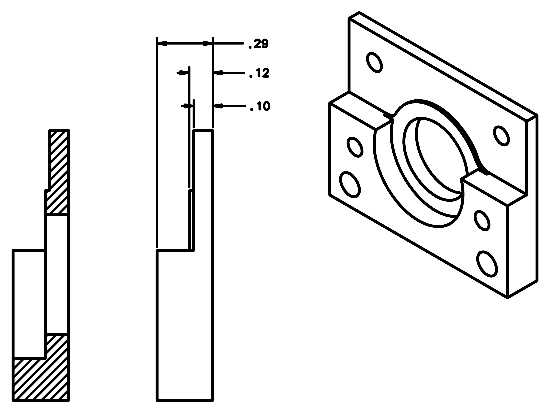
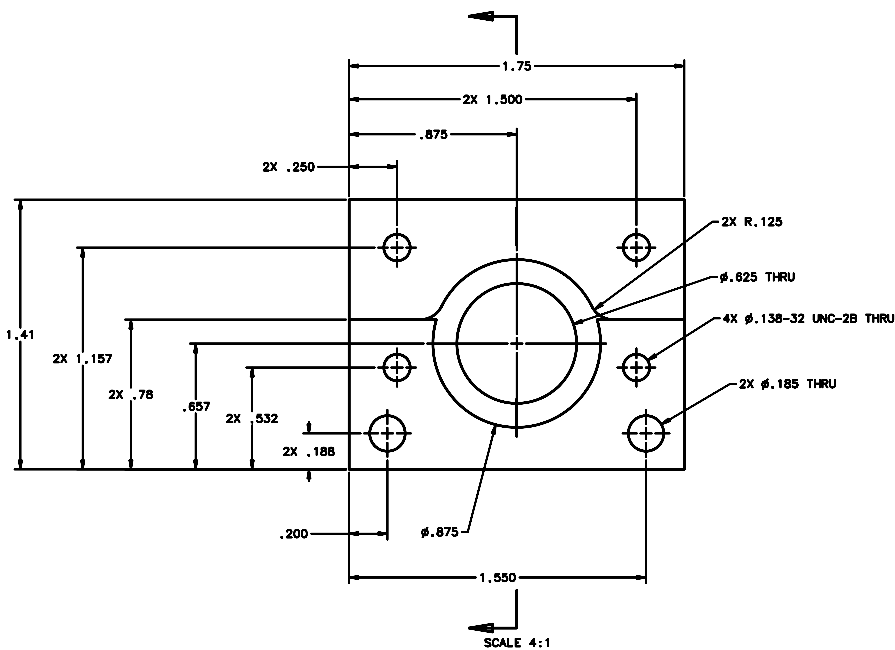


REVISIONS				
LTR	DESCRIPTION	DATE	REVIEWED BY	APPROVED
A	INITIAL RELEASE	03/28/04	J. BROWN	S. LANDIS



- NOTES:
1. BREAK SHARP EDGES & DEBURR.
 2. MACHINED SURFACE FINISH TO BE 125 RMS OR BETTER.
 3. MACHINED FILLETS TO BE .015 MAX.
 4. ANODIZE PER MIL-A-8625, TYPE II, CLASS 2 - BLACK.
 5. ALL DIMENSIONS APPLICABLE BEFORE ANODIZING.

DO NOT SCALE DRAWING		THIS DRAWING CREATED IN:		Steward Observatory, University of Arizona	
TOLERANCES UNLESS OTHERWISE SPECIFIED		ASSEMBLY		933 N. Cherry Avenue, Tucson, AZ 85721 (520)621-7856	
TOLERANCES IN ACCORDANCE WITH ISO 2768-MS		DRAWN BY: D. DEAN		DATE: 06/27/04	
TOLERANCES UNLESS OTHERWISE SPECIFIED		CHECKED BY: G. LANDIS		DATE: 06/27/04	
TOLERANCES UNLESS OTHERWISE SPECIFIED		APPROVED BY: M. NEED		DATE: 06/27/04	
TOLERANCES UNLESS OTHERWISE SPECIFIED		MATERIAL: AL ALLOY 6061-T6		NEXT ASSY USED ON: 14248	
FINISH: 4		ASSEMBLY APPLICATION: MMT-MAESTRO		DRAWING NUMBER: 14248	
		COMPANY TITLE/LOCATION: Steward Observatory, University of Arizona		REVISION: A	
		DRAWING NUMBER: 14248		SHEET 1 OF 1	