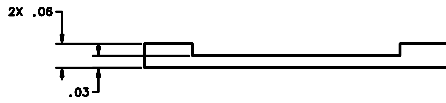
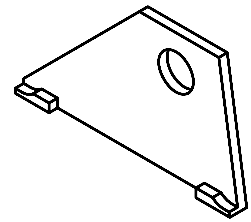
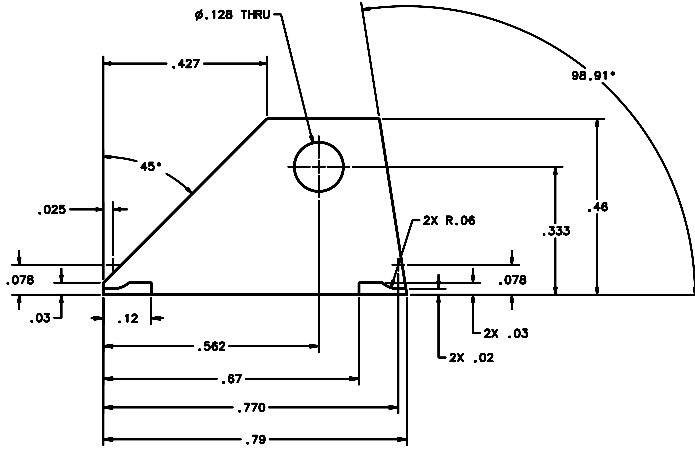


REVISIONS				
LTR	DESCRIPTION	DATE	REVIEWED BY	APPROVED
A	INITIAL RELEASE	03/28/04	J. BROWN	G. LANDIS



SCALE 8:1

NOTES:

- BREAK SHARP EDGES & DEBURR.
- MACHINED SURFACE FINISH TO BE 125 RMS OR BETTER.
- MACHINED FILLETS TO BE .015 MAX.
- ANODIZE PER MIL-A-8625, TYPE II, CLASS 2 - BLACK.
- ALL DIMENSIONS APPLICABLE BEFORE ANODIZING.

DO NOT SCALE DRAWING		THIS DRAWING CREATED IN:		Steward Observatory, University of Arizona			
TOLERANCES UNLESS OTHERWISE SPECIFIED		ASAP		933 N. Cherry Avenue, Tucson, AZ 85721 (520)621-7856			
WITH SIZE 1X, UNLESS OTHERWISE SPECIFIED		MACH		DESIGNED BY: D. DEAN		DATE: 06/27/04	
TOLERANCES		TICKER		APPROVED BY: G. LANDIS		DATE: 06/27/04	
UNLESS OTHERWISE SPECIFIED		MACH		APPROVED BY: M. NEED		DATE: 06/27/04	
LINES		TICKER		APPROVED BY:		DATE:	
SIZE		TICKER		APPROVED BY:		DATE:	
UNLESS OTHERWISE SPECIFIED		TICKER		APPROVED BY:		DATE:	
MATERIAL		14245		PART OR IS BOM#		D -	
AL ALLOY 6061-T6		NEXT ASSY USED ON		NUMBER ASSY#		14245	
FINISH		4		REVISION		A	
ASSEMBLY APPLICATION		COMPANY TOLERANCES/PLATE LOCATION		SHEET 1 OF 1			