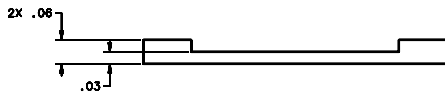
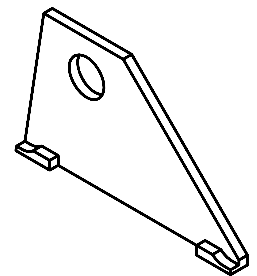
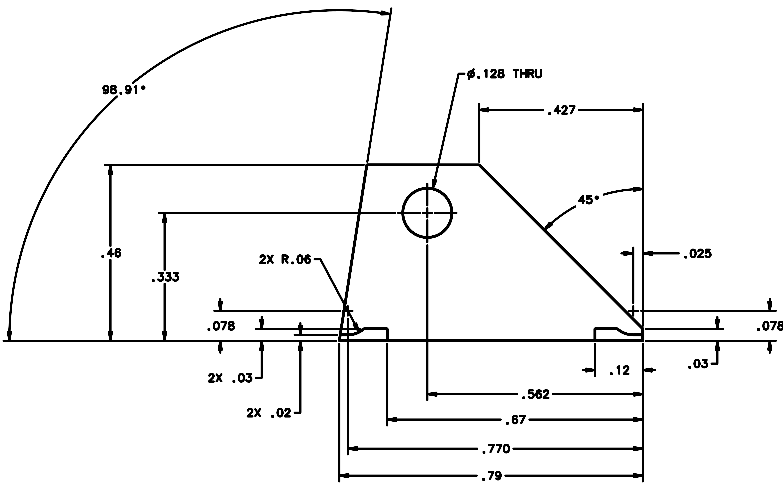


REVISIONS				
LTR	DESCRIPTION	DATE	REVIEWED BY	APPROVED
A	INITIAL RELEASE	03/28/04	J. BROWN	S. LANDIS



SCALE 8:1

NOTES:

- BREAK SHARP EDGES & DEBURR.
- MACHINED SURFACE FINISH TO BE 125 RMS OR BETTER.
- MACHINED FILLETS TO BE .015 MAX.
- ANODIZE PER MIL-A-8625, TYPE II, CLASS 2 - BLACK.
- ALL DIMENSIONS APPLICABLE BEFORE ANODIZING.

DO NOT SCALE DRAWING		THIS DRAWING CREATED IN:		Steward Observatory, University of Arizona	
TOLERANCES UNLESS OTHERWISE SPECIFIED		ASAP		833 N. Cherry Avenue, Tucson, AZ 85721 (520)621-7856	
WITH DECIMALS IN ACCORDANCE WITH ASME Y14.5M-94		MICH		PROJECT: MMT	
TOLERANCES		D. DEAN		DATE: 06/27/04	
UNLESS OTHERWISE SPECIFIED		DESIGNED BY: G. ABALDO		DRAWN BY: G. LANDIS	
FRACTIONS		CHECKED BY: M. NEED		DATE: 06/27/04	
DECIMALS		APPROVED:		TITLE: FOLD MIRROR SIDE CLIP LH	
FRACTIONS		MATERIAL: AL ALLOY 6061-T6		PART OR BOM CODE: D -	
FRACTIONS		NEXT ASSY USED ON: 14285		MATERIAL NUMBER: 14244	
FRACTIONS		FINISH: 4		REVISION: A	
FRACTIONS		ASSEMBLY APPLICATION:		COMPANY TOLERANCE/PLATE LOCATION:	
FRACTIONS		DRAWING NUMBER: 14244		SHEET 1 OF 1	