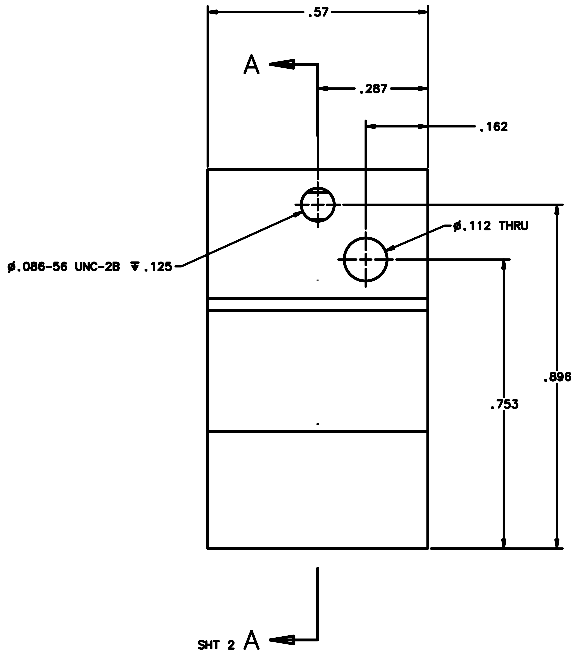
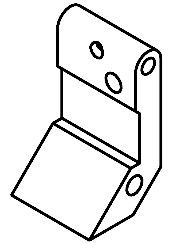
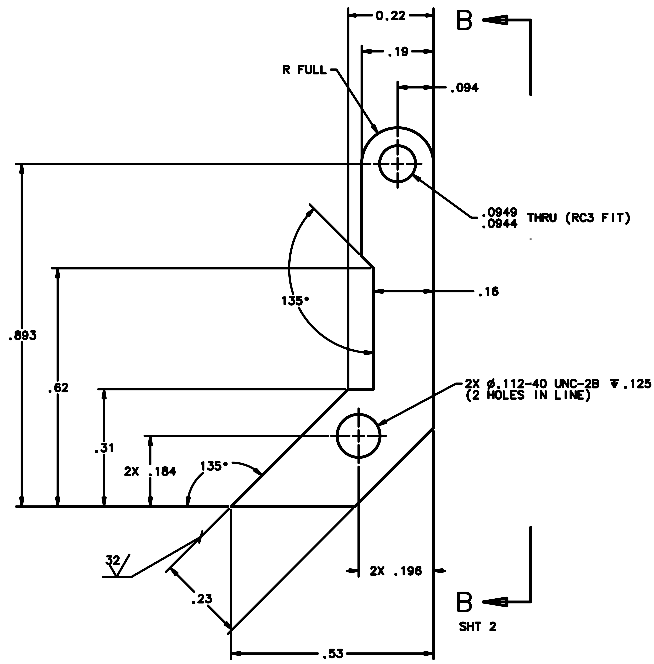


REVISIONS				
LTR	DESCRIPTION	DATE	REVIEWED BY	APPROVED
A	INITIAL RELEASE	02/28/04	G. LANDIS	G. LANDIS
B	REDESIGNED FOR MACHINE SHOP	02/24/04	J. DEAN	-



SCALE 8:1



- NOTES:
- BREAK SHARP EDGES & DEBURR.
 - MACHINED SURFACE FINISH TO BE 125 RMS OR BETTER UNLESS OTHERWISE NOTED.
 - MACHINED FILLETS TO BE .015 MAX.
 - ANODIZE PER MIL-A-8625, TYPE II, CLASS 2 - BLACK.
 - ALL DIMENSIONS APPLICABLE BEFORE ANODIZING.

DO NOT SCALE DRAWING		THIS DRAWING CREATED IN:		Steward Observatory, University of Arizona 933 N. Cherry Avenue, Tucson, AZ 85721 (520)621-7856	
TOLERANCE DIMENSIONS AND TOLERANCES IN ACCORDANCE WITH FIG. 114, 114-04	ASAP	ISO	IPPC	DATE: 02/27/04	PROJECT: MMT
DRAWN BY: D. DEAN	CHECKED BY: G. LANDIS	DATE: 02/27/04	DATE: 02/27/04	APPROVED BY: M. NEED	DATE: 02/27/04
UNLESS OTHERWISE SPECIFIED TOLERANCES ARE:	ASSEMBLY:	DATE:	DATE:	DATE:	DATE:
FRAMES	14243	MMT-MAESTRO			
MATERIAL: AL ALLOY 6061-T6	USED ON:				
FINISH: 4	ASSEMBLY APPLICATION:				
COMPANY TOLERANCE/PLATE LOCATION:		PART OR BOM CODE:		NUMBER ASSY:	
ASSEMBLY APPLICATION:		D -		14243	
CHECKED BY: G. LANDIS					REVISION: B
DATE: 02/27/04					SHEET 1 OF 2