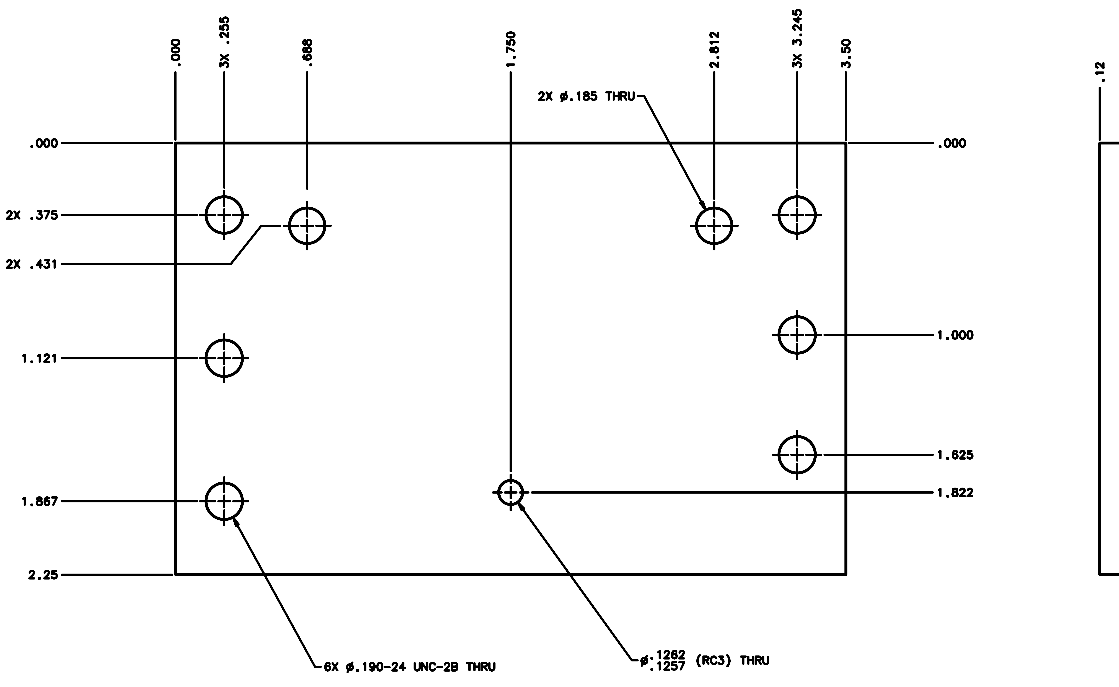


REVISIONS			
LTR	DESCRIPTION	DATE	REVIEWED BY
A	INITIAL RELEASE	03/28/04	J. BROWN



SCALE 4:1

- NOTES:
- BREAK SHARP EDGES & DEBURR.
 - MACHINED SURFACE FINISH TO BE 125 RMS OR BETTER.
 - ANODIZE PER MIL-A-8625, TYPE II, CLASS 2 - BLACK.
 - ALL DIMENSIONS APPLICABLE BEFORE ANODIZING.

DO NOT SCALE DRAWING		THIS DRAWING CREATED IN:		Steward Observatory, University of Arizona	
TOLERANCES UNLESS OTHERWISE SPECIFIED		ASAP	MECH	933 N. Cherry Avenue, Tucson, AZ 85721 (520)621-7856	
TOLERANCES IN ACCORDANCE WITH ISO 2768-MS		<input type="checkbox"/>	<input type="checkbox"/>	<input checked="" type="checkbox"/>	
UNLESS OTHERWISE SPECIFIED		DESIGNED BY	DATE	PROJECT	
LINES		D. DEAN	06/27/04	MAESTRO	
DIMENSIONS		DRAWN BY		TITLE	
AS SHOWN		G. LANDIS	06/27/04	INJECTION OPTICS HOUSING MOUNT PLATE	
UNLESS OTHERWISE SPECIFIED		APPROVED BY			
MATERIAL		M. REED	06/27/04		
AL ALLOY 6061-T6		APPROVED			
FINISH		14288	MAESTRO	PLAT BY (SHEET)	DESIGNER (SHEET)
3		USED ON		D -	14240
ASSEMBLY APPLICATION		APPROVED			A
		COMPARE THIS DRAWING WITH LOCATION:		SHEET 1 OF 1	