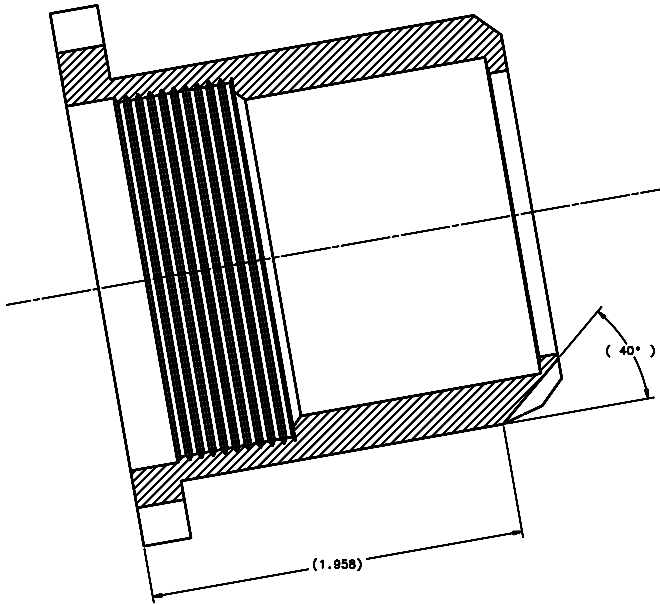


REVISIONS			
LTR	DESCRIPTION	DATE	REVISED BY / APPROVED
A	INITIAL RELEASE	03/28/04	J. BROWN / S. LANDIS



SECTION C-C SH1 4

SCALE 4:1

DO NOT SCALE DRAWING		THIS DRAWING CREATED IN:		Steward Observatory, University of Arizona	
TOLERANCES UNLESS OTHERWISE SPECIFIED		ASAP	ASAP	933 N. Cherry Avenue, Tucson, AZ 85721 (520)621-7850	
TOLERANCES IN ACCORDANCE WITH SPC 114.00-04		<input type="checkbox"/>	<input type="checkbox"/>	DESIGNED BY: D. DEAN	DATE: 06/27/04
TOLERANCES UNLESS OTHERWISE SPECIFIED				APPROVED BY: S. LANDIS	DATE: 06/27/04
LINEAR DIMENSIONS: ±0.005				APPROVED BY: M. REED	DATE: 06/27/04
ANGULAR DIMENSIONS: ±0.005				PROJECT: MMT	
HOLE DIMENSIONS: ±0.005				SUBJECT: MAESTRO	
HOLE DIMENSIONS: ±0.005				TITLE: INJECTION OPTICS LENS CAN	
MATERIAL: AL ALLOY 6061-T6		14238	MMT-MAESTRO	PLAT TO BE BOMBI	NUMBER ASSY: 14238
FINISH: 4		NEXT ASSY USED ON:		APPROVED:	REVISION: A
ASSEMBLY APPLICATION:		COMPANY TOLERANCES/PLATE LOCATION:		SHEET 4 OF 5	