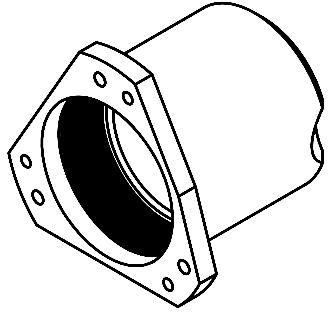
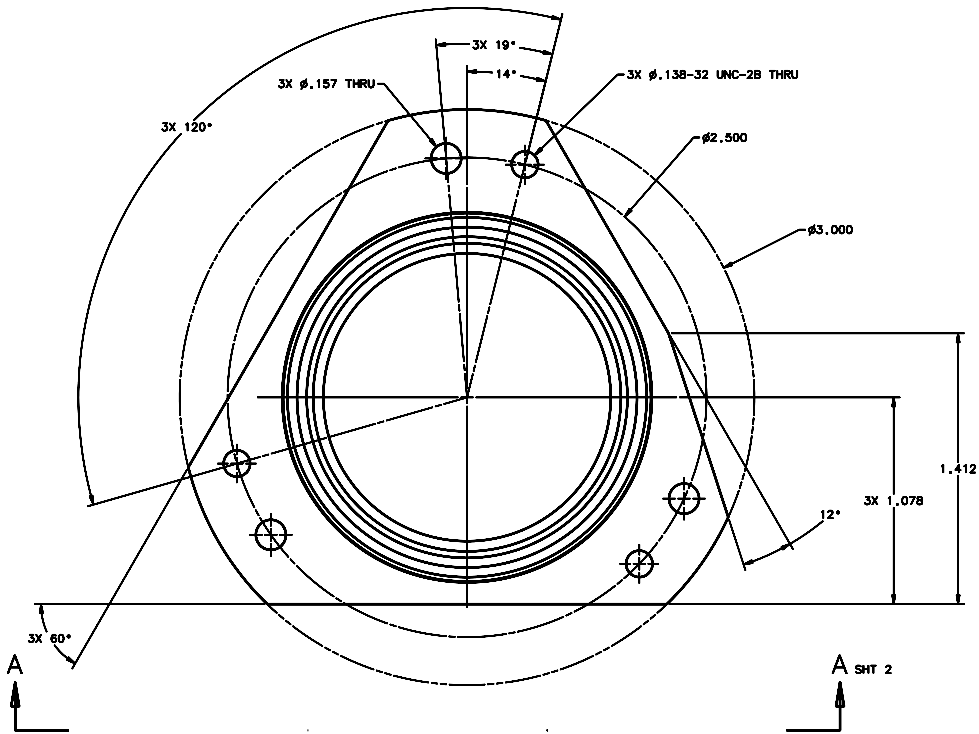


REVISIONS			
LTR	DESCRIPTION	DATE	REVIEWED BY / APPROVED
A	INITIAL RELEASE	03/28/04	J. BROWN / S. LAMB



SCALE 4:1

- NOTES:
1. BREAK SHARP EDGES & DEBURR.
 2. MACHINED SURFACE FINISH TO BE 125 RMS OR BETTER.
 3. MACHINED FILLETS TO BE .015 MAX.
 - 4 ANODIZE PER MIL-A-8625, TYPE II, CLASS 2 - BLACK.
 5. ALL DIMENSIONS APPLICABLE BEFORE ANODIZING.

DO NOT SCALE DRAWING		THIS DRAWING CREATED IN:		Steward Observatory, University of Arizona	
TOLERANCES UNLESS OTHERWISE SPECIFIED ARE IN ACCORDANCE WITH ASME Y14.5M-94		ASAP	ISO	933 N. Cherry Avenue, Tucson, AZ 85721 (520)621-7856	
TOLERANCES		ASAP	ISO	DATE: 06/27/04	PROJECT: MMT
UNLESS OTHERWISE SPECIFIED		ASAP	ISO	DESIGNED BY: D. DEAN	PROJECT: MAESTRO
LINES		ASAP	ISO	DESIGNED BY: G. LAMBIS	DATE: 06/27/04
APPROVED BY: M. NEED		ASAP	ISO	DATE: 06/27/04	TITLE: INJECTION OPTICS LENS CAN
MATERIAL		ASAP	ISO	DATE: 06/27/04	PROJECT: MAESTRO
AL ALLOY 6061-T6		14238	MMT-MAESTRO	DATE: 06/27/04	PROJECT: MAESTRO
FINISH		14238	MMT-MAESTRO	DATE: 06/27/04	PROJECT: MAESTRO
ASSEMBLY APPLICATION		14238	MMT-MAESTRO	DATE: 06/27/04	PROJECT: MAESTRO
COMPANY TOLERANCES/STYLING LOCATION		14238	MMT-MAESTRO	DATE: 06/27/04	PROJECT: MAESTRO
STANDARD: ASME Y14.5M-94		14238	MMT-MAESTRO	DATE: 06/27/04	PROJECT: MAESTRO