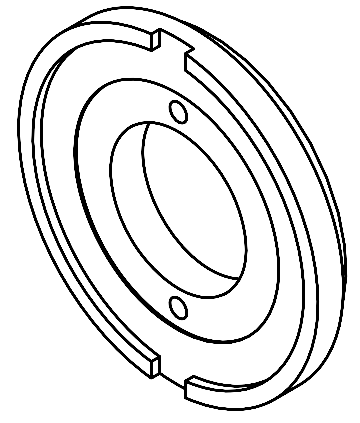


SECTION A-A

SCALE 16:1

- NOTES:
1. BREAK SHARP EDGES & DEBURR.
 2. MACHINED SURFACE FINISH TO BE 125 RMS OR BETTER.
 3. MACHINED FILLETS TO BE .015 MAX.
 4. ANODIZE PER MIL-A-8625, TYPE II, CLASS 2 - BLACK.
 5. ALL DIMENSIONS APPLICABLE BEFORE ANODIZING.

REVISIONS			
LTR	DESCRIPTION	DATE	REVIEWED BY / APPROVED
A	INITIAL RELEASE	03/28/04	J. BROWN / S. LAMBIS



DO NOT SCALE DRAWING		THIS DRAWING CREATED IN:		Steward Observatory, University of Arizona	
INTERPRET DIMENSIONS AND TOLERANCES IN ACCORDANCE WITH SAE Y14.5M-94		ASAP	MECH	14234	833 N. Cherry Avenue, Tucson, AZ 85721 (520)621-7856
TOLERANCES UNLESS OTHERWISE SPECIFIED		DEC	06/27/04	PROJECT:	MMT
FRACTIONS		DESIGNED BY:	D. DEAN	PROJECT:	MAESTRO
DECIMALS		DRAWN BY:	G. LAMBIS	DATE:	06/27/04
ANGLES		APPROVED BY:	M. NEED	DATE:	06/27/04
HORIZONTAL AND VERTICAL		APPROVED:		TITLE:	SLIT DISK
MATERIAL		ALLOY:	14234	PLAT TO BE BORED:	D -
AL ALLOY 6061-T6		FINISH:	4	ORDER NUMBER:	14236
NEXT ASSY USED ON:		ASSEMBLY APPLICATION:		REVISION:	A
FINISH 4		COMPANY TOLERANCE/PLATE LOCATION:		SHEET 1 OF 1	