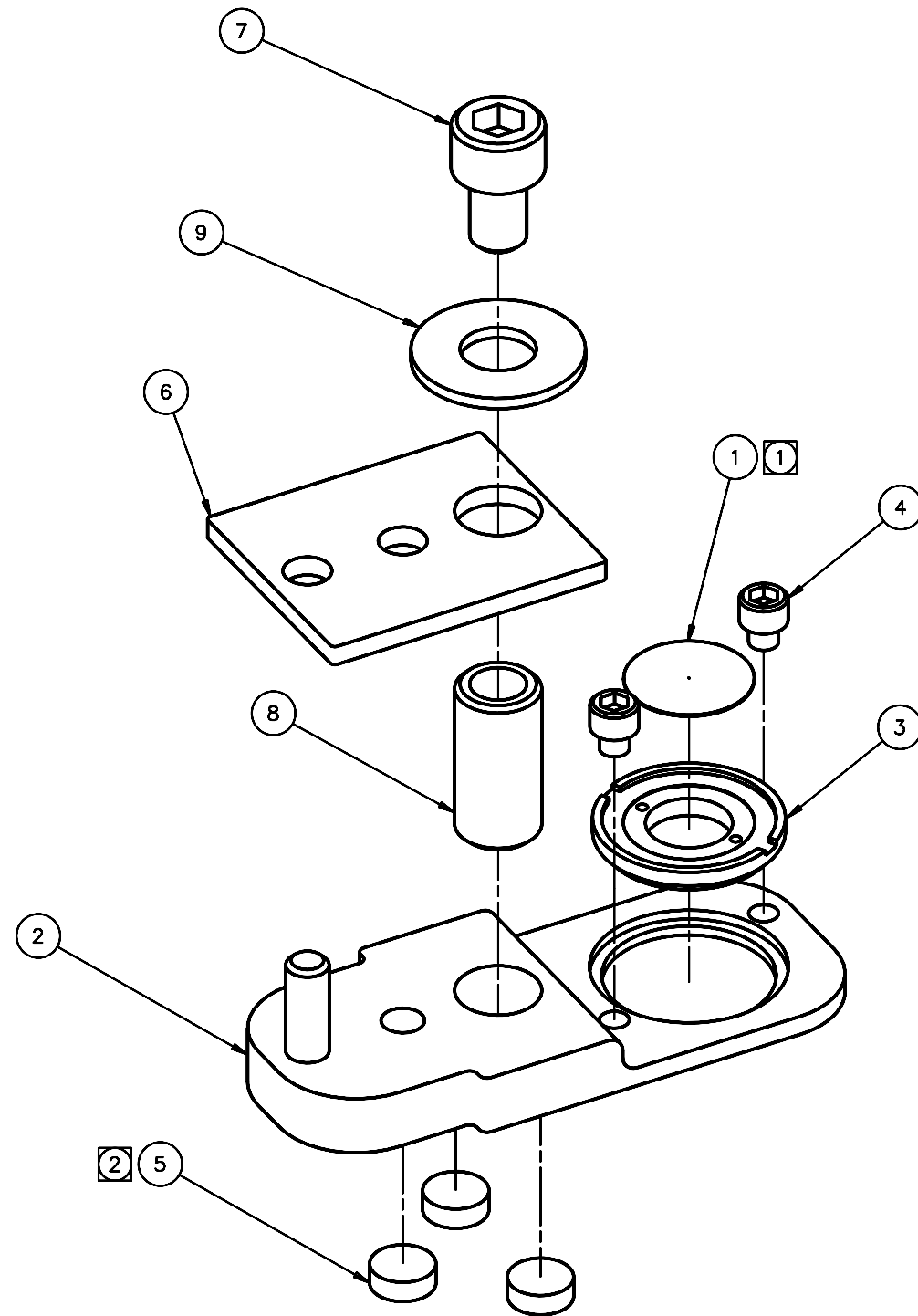


REVISIONS				
LTR	DESCRIPTION	DATE	REVISED BY	APPROVED
A	INITIAL RELEASE	03/29/05	J. BRENNAN	G. LANDIS
B	ADDED SLIT HOLDER TRAP PLATE (ITEM NUMBER 6)	05/04/05	J. BRENNAN	D. DEAN
C	NOTE 1: . . . 13689-13 WAS . . . 13689-11	6/20/05	R. NAGY	M. REED



SCALE 4:1

NOTES:

- ① REMOVE AND REPLACE PER REQTS. DWG 13689-1 THRU 13689-13 ARE REPLACEMENT SLITS.
- ② ITEM 3 MAGNETS, ARE TO BE BONDED WITH A SUPER GLUE TYPE ADHESIVE.

QTY PER ASSY	PART NUMBER	PART DESCRIPTION	MANUFACTURER of MAT'L SPEC	ITEM NO.
1	98019A333	WASHER .500 X .036 THK	McMASTER CARR	9
1	97175A309	PIN .250 X .500 / .164-32 TAPPED	McMASTER CARR	8
1	92196A190	.164-32 UNC X .250 SHCS	McMASTER CARR	7
1	14809	SLIT HOLDER TRAP PLATE		6
3	NT38-428	MAGNET NEODYMIUM BORON	EDMUND	5
2	14237	.086-56 UNC X .075 SHCS		4
1	14236	SLIT DISK		3
1	14235	SLIT HOLDER PLATE		2
1	13689	SLIT PLATE		1

①

DO NOT SCALE DRAWING INTERPRET DIMENSIONS AND TOLERANCES IN ACCORDANCE WITH ASME Y14.5M-94		THIS DRAWING CREATED IN: ACAD <input type="checkbox"/> MECH <input type="checkbox"/> IDEAS <input checked="" type="checkbox"/>		Steward Observatory, University of Arizona 933 N. Cherry Avenue, Tucson, AZ 85721 (520)621-7659	
TOLERANCES UNLESS OTHERWISE SPECIFIED LINEAR .X = ± .XX = ± .XXX = ± ANGULAR ± °		DESIGNED BY: D. DEAN DRAWN BY: R. ABALDO CHECKED BY: G. LANDIS APPROVED: M. REED APPROVED: J. BECHTOLD APPROVED: R. WARNER		DATE: 09/27/04 CATEGORY: MMT PROJECT: MAESTRO TITLE: SLIT HOLDER ASSEMBLY PLOT SIZE SCALE: D - DRAWING NUMBER: 14234 REVISION: C	
MATERIAL		14268 MMT-MAESTRO		NEXT ASSY USED ON	
FINISH		ASSEMBLY APPLICATION		CURRENT TIME/DATE/FILE LOCATION: DRAWING ARCHIVE LOCATION: http://dov.incl.us.arizona.edu/ocod/default.html	