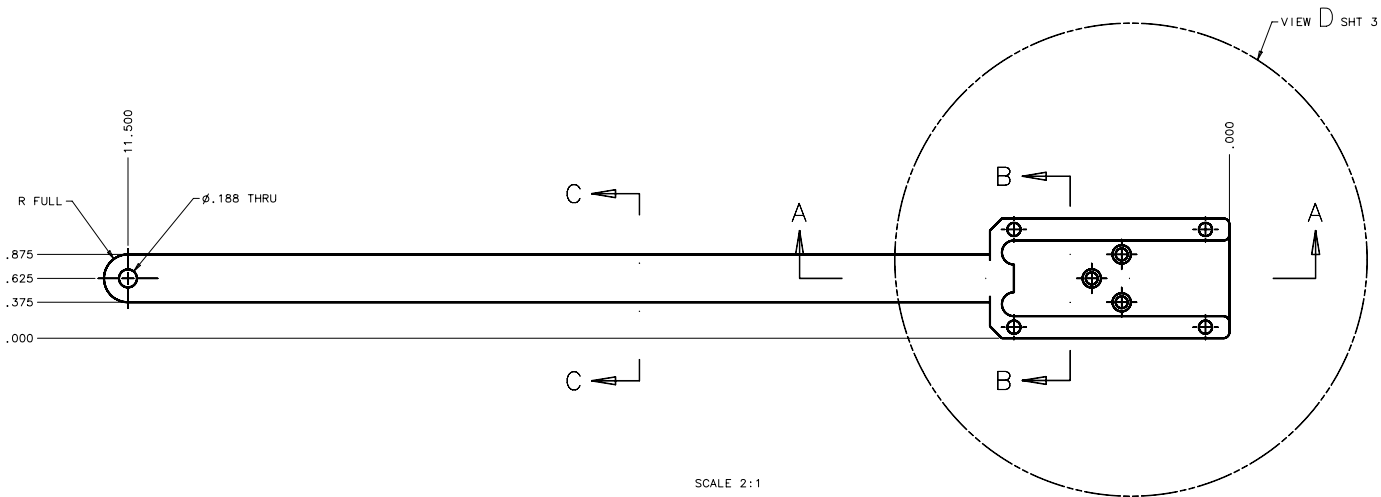


REVISIONS				
LTR	DESCRIPTION	DATE	REVIEWED BY	APPROVED
A	INITIAL RELEASE	03/28/04	J. DEAN	G. LANDIS



- NOTES:
1. BREAK SHARP EDGES & DEBURR.
 2. MACHINED SURFACE FINISH TO BE 125 RMS OR BETTER.
 3. MACHINED FILLETS TO BE .015 MAX.
 4. ANODIZE PER MIL-A-8625, TYPE II, CLASS 2 - BLACK.
 5. ALL DIMENSIONS APPLICABLE BEFORE ANODIZING.
 6. BLEND ALL RADII AT INTERSECTIONS.

DO NOT SCALE DRAWING		THIS DRAWING CREATED IN:		Steward Observatory, University of Arizona	
TOLERANCES UNLESS OTHERWISE SPECIFIED		ASAP		933 N. Cherry Avenue, Tucson, AZ 85721 (520)621-7856	
TOLERANCES IN ACCORDANCE WITH ISO 2875-01		MESH		PROJECT: MAESTRO	
TOLERANCES		TOLERANCES		DATE: 06/27/04	
HOLE POSITION UNLESS OTHERWISE SPECIFIED		DESIGNED BY: D. DEAN		APPROVED BY: MMT	
LINEAR		DRAWN BY: G. ALBALDO		DATE: 06/27/04	
ANGULAR		CHECKED BY: G. LANDIS		DATE: 06/27/04	
CIRCULAR		APPROVED BY: M. NEED		DATE: 06/27/04	
SURFACE FINISH		APPROVED BY:		TITLE: SLIT SLIDE LOADER PLATE	
MATERIAL		14212		PART OR JOB NO: D -	
AL ALLOY 6061-T6		MMT-MAESTRO		DRAWING NO: 14213	
FINISH		NEXT ASSY USED ON		REVISION: A	
ASSEMBLY APPLICATION		COMPANY TOLERANCES/PLATE LOCATION		SHEET 1 OF 3	