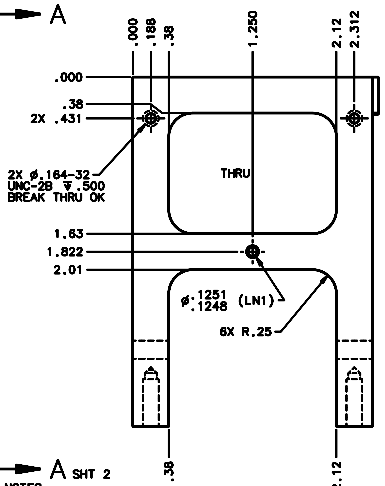
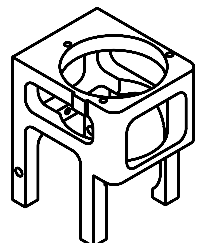
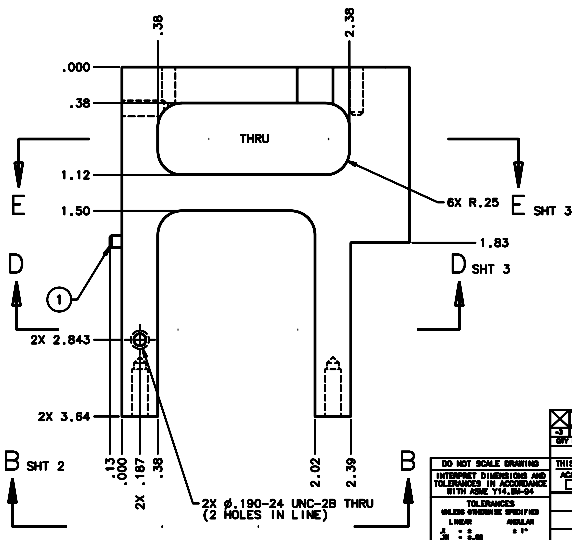


REVISIONS			
LTR	DESCRIPTION	DATE	REVISED BY / APPROVED
A	INITIAL RELEASE	03/28/04	J. DEAN / S. LINDEN



- NOTES:
- BREAK SHARP EDGES & DEBURR.
  - MACHINED SURFACE FINISH TO BE 125 RMS OR BETTER.
  - MACHINED FILLETS TO BE .015 MAX.
  - ZINC CHROMATE PER ASTM-B-633-98, TYPE II, BLACK.
  - DIMENSIONS APPLY PRIOR TO ZINC CHROMATE
  - HEAT TREATMENT: A. HEAT TREAT AT 315°C FOR 60 MINUTES IN AIR.  
B. COOL TO ROOM TEMPERATURE IN AIR.  
C. HOLD AT 95°C FOR 48 HOURS IN AIR.  
D. COOL TO ROOM TEMPERATURE IN AIR.



SCALE 2:1

<input checked="" type="checkbox"/> 1 90145A471 <small>REV. PART NUMBER</small>		φ.125 X .500 18-8 STAINLESS STEEL DOMEL PIN <small>REV. PART NUMBER</small>		McMASTER CARR 1 <small>REV. PART NUMBER</small>	
LIST OF MATERIALS					
<b>Steward Observatory, University of Arizona</b> 933 N. Cherry Avenue, Tucson, AZ 85721 (520)621-7850					
DRAWN BY: D. DEAN CHECKED BY: S. ABALDO DATE: 02/10/04		PROJECT: MAESTRO TITLE: INJECTION OPTICS HOUSING			
MATERIAL: INVAR 36 ALLOY FINISH: 4		QUANTITY: 14288 USED ON: MMT-MAESTRO		PART OR BOM#: D - ORDER NUMBER: 14155 REVISION: A	
ASSEMBLY APPLICATION:					