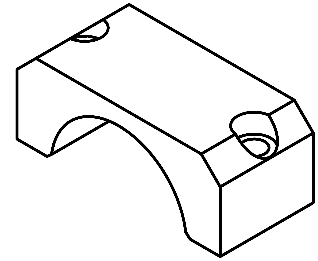


SCALE 4:1

NOTES:

1. BREAK SHARP EDGES & DEBURR.
2. MACHINED SURFACE FINISH TO BE 125 RMS OR BETTER.
3. ANODIZE PER MIL-A-8625, TYPE II, CLASS 2 - BLACK.
4. ALL DIMENSIONS APPLICABLE BEFORE ANODIZING.

REVISIONS				
LTR	DESCRIPTION	DATE	REVIEWED BY	APPROVED
A	INITIAL RELEASE	03/28/04	J. BROWN	S. LINDS



DO NOT SCALE DRAWING		THIS DRAWING CREATED IN:		Steward Observatory, University of Arizona	
INTERPRET DIMENSIONS AND TOLERANCES IN ACCORDANCE WITH SPC 114, 114-S4		ASAP	MECH	14174	14173
TOLERANCES		DESIGNED BY: D. DEAN		DATE: 06/21/04	PROJECT: MMT
UNLESS OTHERWISE SPECIFIED		DRAWN BY: G. ABALDO		DATE: 06/21/04	PROJECT: MAESTRO
LINES: HIDDEN		CHECKED BY: G. LANDIS		DATE: 06/21/04	TITLE: GUIDE CAMERA RELAY LENS CLAMP BLOCK
DIM: .0005 .001 .002 .005 .010 .020 .050 .100 .150 .250 .500 1.000 2.000 5.000 10.000		APPROVED BY: M. REED		DATE: 06/21/04	PLAT BY: BORDY
FINISH: 3		MATERIAL: AL ALLOY 6061-T6		14174	MMT-MAESTRO
NEXT ASSY USED ON:		APPROVED BY:		D	14173
ASSEMBLY APPLICATION:		COMPANY TOLERANCE/PLATE LOCATION:		REVISION: A	
		STANDARD: ASSUME UNLESS NOTED BY SPECIFICATION AND/OR DIMENSIONS AND/OR TOLERANCES		SHEET 1 OF 1	