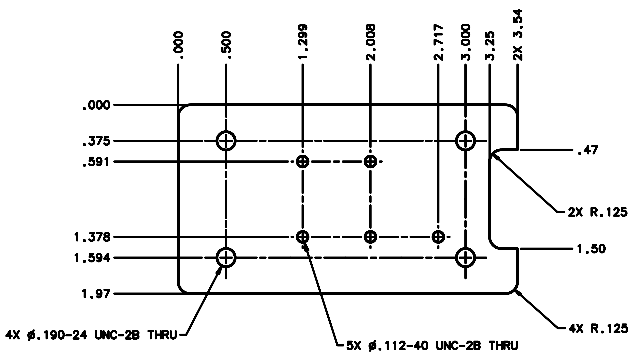
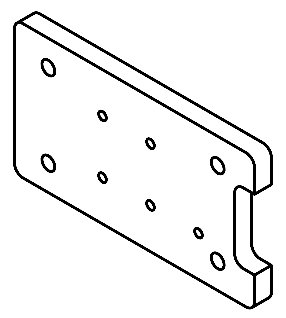
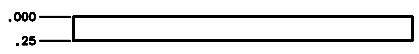


| REVISIONS | | | | |
|-----------|-----------------|----------|-------------|-----------|
| LTR | DESCRIPTION | DATE | REVIEWED BY | APPROVED |
| A | INITIAL RELEASE | 03/28/04 | J. BROWN | S. LANDIS |



SCALE 2:1

- NOTES:
1. BREAK SHARP EDGES & DEBURR.
 2. MACHINED SURFACE FINISH TO BE 125 RMS OR BETTER.
 3. MACHINED FILLETS TO BE .015 MAX.
 4. ANODIZE PER MIL-A-8625, TYPE II, CLASS 2 - BLACK.
 5. ALL DIMENSIONS APPLICABLE BEFORE ANODIZING.

| | | | | | |
|---|--|--------------------------|--|--|--|
| DO NOT SCALE DRAWING | | THIS DRAWING CREATED IN: | | Steward Observatory, University of Arizona | |
| TOLERANCES UNLESS OTHERWISE SPECIFIED | | ASAP | | 933 N. Cherry Avenue, Tucson, AZ 85721 (520)621-7856 | |
| WITH DECIMALS IN ACCORDANCE WITH ASME Y14.5M-94 | | MILL | | PROJECT: MMT | |
| TOLERANCES | | DRAWN BY: D. DEAN | | DATE: 06/21/04 | |
| UNLESS OTHERWISE SPECIFIED | | CHECKED BY: G. ABALDO | | DATE: 06/21/04 | |
| FRACTIONS | | DESIGNED BY: G. LANDIS | | DATE: 06/21/04 | |
| LINES | | APPROVED BY: M. NEED | | DATE: 06/21/04 | |
| ANGLES | | APPROVED BY: | | DATE: | |
| DIMENSIONS | | MATERIAL | | ALLOY | |
| UNLESS OTHERWISE SPECIFIED | | AL ALLOY 6061-T6 | | 14174 | |
| DIMENSIONS | | NEXT ASSY USED ON | | MMT-MAESTRO | |
| DIMENSIONS | | FINISH | | 4 | |
| DIMENSIONS | | ASSEMBLY APPLICATION | | COMPANY TOLERANCES/PLATE LOCATION | |
| DIMENSIONS | | ASSEMBLY APPLICATION | | PART OR BOM CODE: D - | |
| DIMENSIONS | | ASSEMBLY APPLICATION | | DRAWING NUMBER: 14168 | |
| DIMENSIONS | | ASSEMBLY APPLICATION | | REVISION: A | |
| DIMENSIONS | | ASSEMBLY APPLICATION | | SHEET 1 OF 1 | |