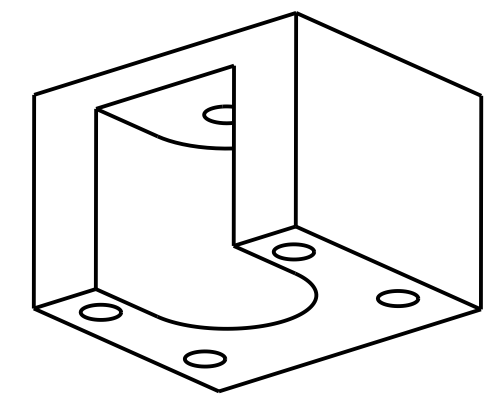
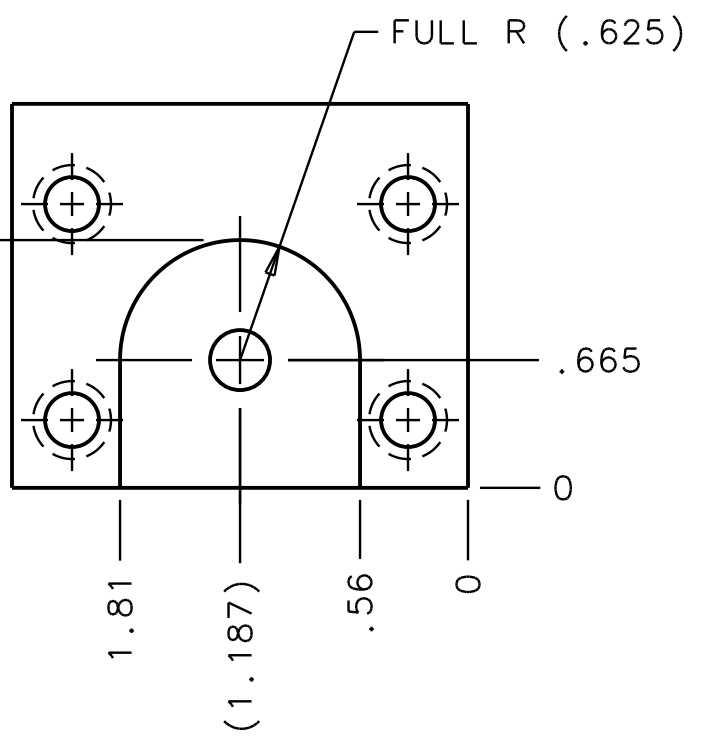
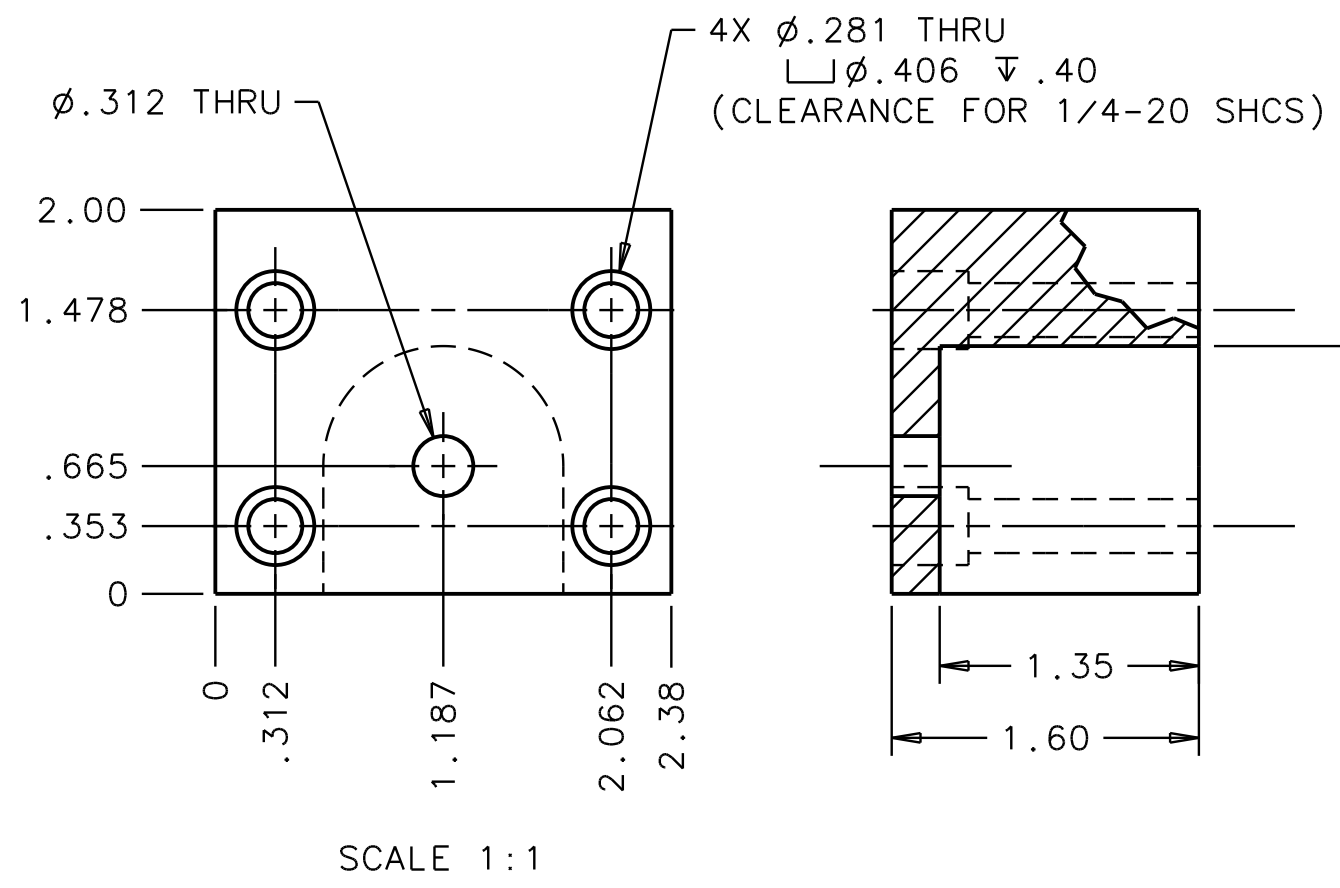


REVISIONS				
LTR	DESCRIPTION	DATE	REVISED BY	APPROVED
A	INITIAL RELEASE	01/08/07	R. NAGY	D. DEAN



3D VIEW  
 SCALE NTS

- NOTES:
- BREAK SHARP EDGES & DEBURR.
  - MACHINED SURFACE FINISH TO BE 125 RMS OR BETTER.
  - MACHINED FILLETS TO BE R.03 MAX.
  - ANODIZE PER MIL-A-8625, TYPE II, CLASS 2, BLACK.
  - DIMENSIONS ARE BEFORE ANODIZING.

DO NOT SCALE DRAWING INTERPRET DIMENSIONS AND TOLERANCES IN ACCORDANCE WITH ASME Y14.5M-94		THIS DRAWING CREATED IN: ACAD <input type="checkbox"/> MECH <input type="checkbox"/> IDEAS <input checked="" type="checkbox"/>			Steward Observatory, University of Arizona 933 N. Cherry Avenue, Tucson, AZ 85721 (520)621-7659			
TOLERANCES UNLESS OTHERWISE SPECIFIED LINEAR ANGULAR .X = NA ±1° .XX = ±.03 .XXX = ±.010 DIAMETRICAL SEE SPEC S-002		DESIGNED BY: D. DEAN		DATE: 01/04/07		CATEGORY: MMT		
DIMENSIONS ARE IN INCHES / DIMENSIONS IN ( ) ARE METRIC		DRAWN BY: R. NAGY		01/05/07		PROJECT: MAESTRO		
MATERIAL 6061-T6 Al		CHECKED BY: D. DEAN		01/08/07		TITLE: GRATING CELL STEPPER MOTOR DRIVE BLOCK		
FINISH 4		APPROVED: D. DEAN		01/08/07		PLOT SIZE: SCALE: DRAWING NUMBER: REVISION: B SEE VIEWS 17693 A		
NEXT ASSY USED ON		APPROVED:		APPROVED:		CURRENT TIME/DATE/FILE LOCATION: - DRAWING ARCHIVE LOCATION: <a href="http://dovinci.as.arizona.edu/acad/default.html">http://dovinci.as.arizona.edu/acad/default.html</a>		
ASSEMBLY APPLICATION		APPROVED:		APPROVED:		SHEET 1 OF 1		