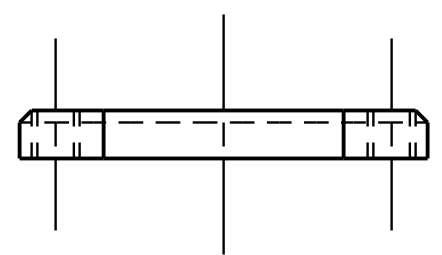
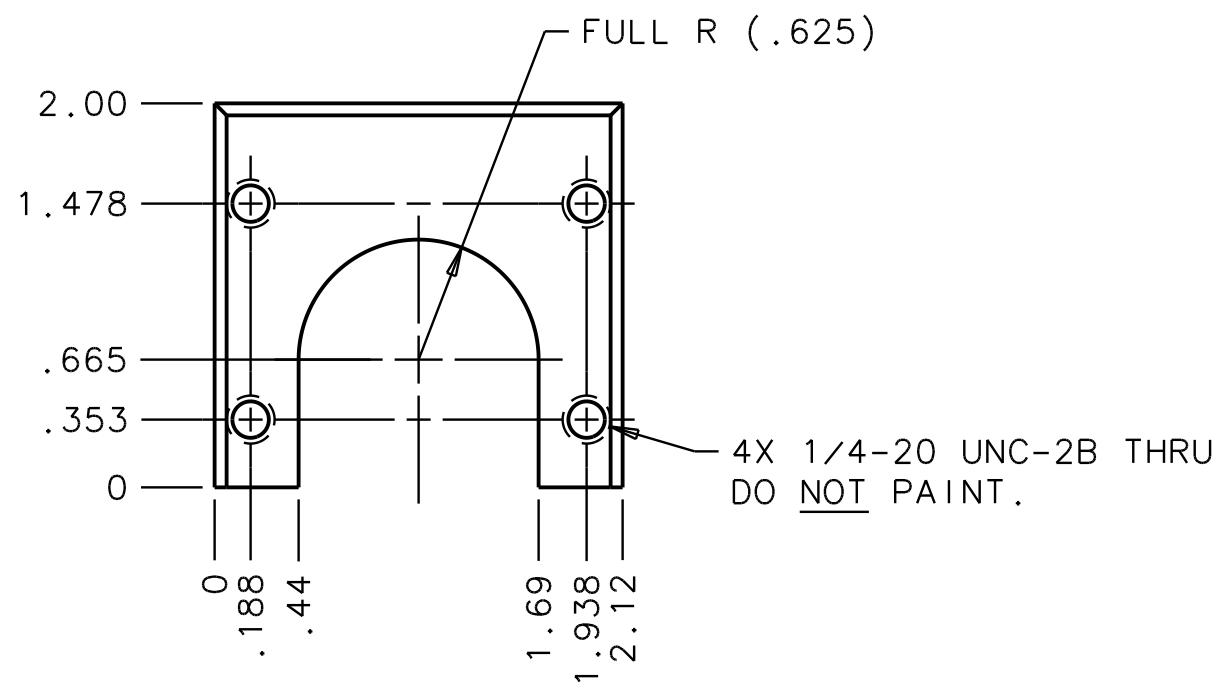
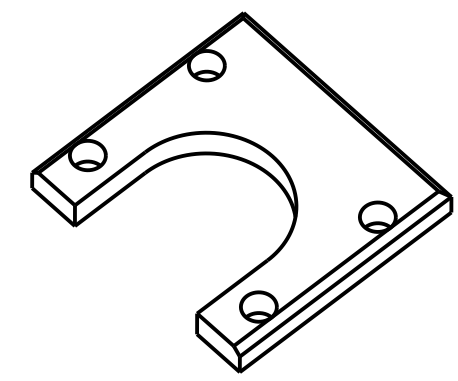
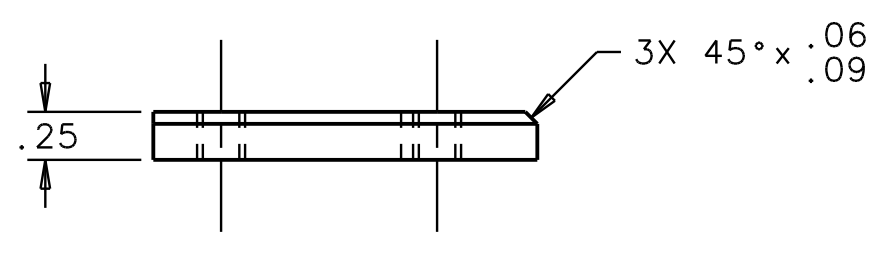


REVISIONS				
LTR	DESCRIPTION	DATE	REVISED BY	APPROVED
A	INITIAL RELEASE	01/08/07	R. NAGY	D. DEAN



SCALE 1:1



3D VIEW
SCALE NTS

NOTES:

1. BREAK SHARP EDGES & DEBURR.
2. MACHINED SURFACE FINISH TO BE 125 RMS OR BETTER.
3. MAESTRO PERSONNEL TO PAINT BLACK PER THEIR SPECIFICATIONS ALL SURFACES, EXCEPT THREADED HOLES.
4. DIMENSIONS ARE BEFORE PAINTING.

DO NOT SCALE DRAWING INTERPRET DIMENSIONS AND TOLERANCES IN ACCORDANCE WITH ASME Y14.5M-94		THIS DRAWING CREATED IN: ACAD <input type="checkbox"/> MECH <input type="checkbox"/> IDEAS <input checked="" type="checkbox"/>		Steward Observatory, University of Arizona 933 N. Cherry Avenue, Tucson, AZ 85721 (520)621-7659					
TOLERANCES UNLESS OTHERWISE SPECIFIED LINEAR ANGULAR .X = NA ±1° .XX = ±.03 .XXX = ±.010 DIAMETRICAL SEE SPEC S-002				DESIGNED BY: D. DEAN	DATE: 01/04/07	CATEGORY: MMT			
DIMENSIONS ARE IN INCHES / DIMENSIONS IN () ARE METRIC				DRAWN BY: R. NAGY	01/04/07	PROJECT: MAESTRO			
MATERIAL 1018 STEEL				CHECKED BY: D. DEAN	01/08/07	TITLE: GRATING CELL STEPPER MOTOR DRIVE BLOCK NUT PLATE			
FINISH 3		NEXT ASSY USED ON		APPROVED: D. DEAN	01/08/07				
ASSEMBLY APPLICATION				APPROVED:		PLOT SIZE B	SCALE: SEE VIEWS	DRAWING NUMBER: 17691	REVISION: A
				CURRENT TIME/DATE/FILE LOCATION: -					
				DRAWING ARCHIVE LOCATION: http://dovinci.as.arizona.edu/acad/default.html					
								SHEET 1 OF 1	