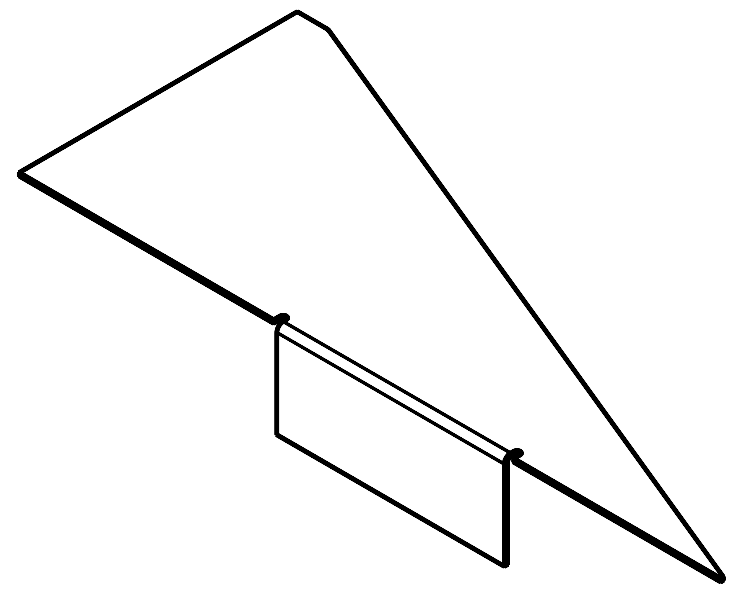
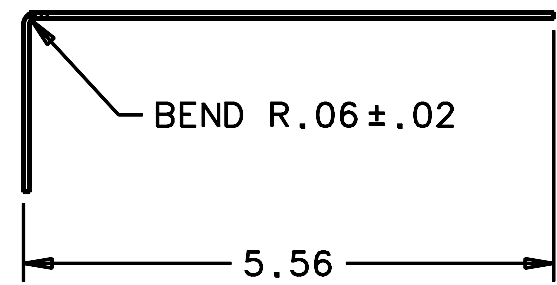
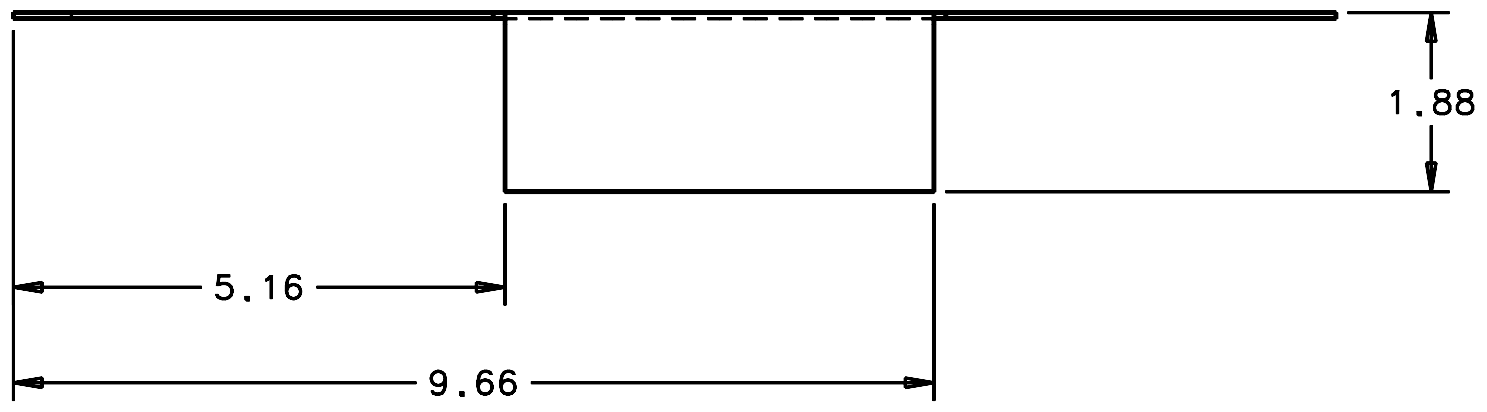
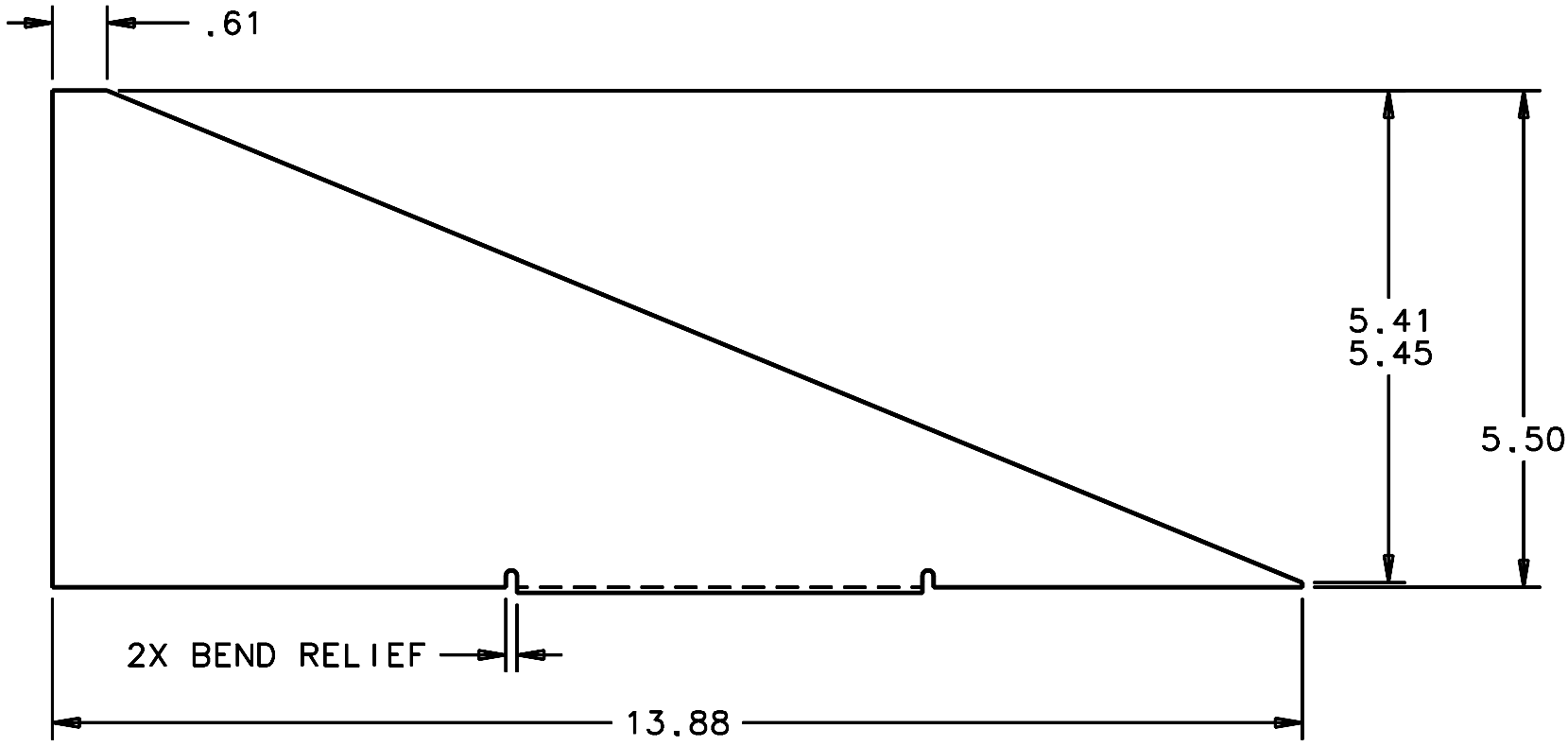


REVISIONS				
LTR	DESCRIPTION	DATE	REVISED BY	APPROVED
A	INITIAL RELEASE	3/22/05	R. NAGY	G. LANDIS



SCALE NTS

SCALE 1:2

NOTES:

- BREAK SHARP EDGES & DEBURR.
- HEAT TREATMENT: A. HEAT TREAT AT 315°C FOR 60 MINUTES IN AIR.
B. COOL TO ROOM TEMPERATURE IN AIR.
C. HOLD AT 95°C FOR 49 HOURS IN AIR.
D. COOL TO ROOM TEMPERATURE IN AIR.
- (1) REQUIRED PER NEXT ASSEMBLY.

DO NOT SCALE DRAWING INTERPRET DIMENSIONS AND TOLERANCES IN ACCORDANCE WITH ASME Y14.5M-94	THIS DRAWING CREATED IN:			Steward Observatory, University of Arizona 933 N. Cherry Avenue, Tucson, AZ 85721 (520)621-7659					
	ACAD <input type="checkbox"/>	MECH <input type="checkbox"/>	IDEAS <input checked="" type="checkbox"/>	DESIGNED BY: R. NAGY	DATE: 12/3/04	CATEGORY: MMT			
TOLERANCES UNLESS OTHERWISE SPECIFIED LINEAR .X - NA .XX - 2.02 .XXX - NA ANGULAR ±1° DIAMETRICAL SEE SPEC S-002				DRAWN BY: R. NAGY	12/6/04	PROJECT: MAESTRO			
				CHECKED BY: G. LANDIS	3/21/05	TITLE: GRATING CELL PLATFORM CORNER BRACE BRIDGE			
				APPROVED: M. REED	3/22/05				
				APPROVED: J. BECHTOLD	3/22/05				
MATERIAL INVAR 36 ALLOY, 16 B.G. (.0625)	13435	MMT		APPROVED:		PLOT SIZE B	SCALE: -	DRAWING NUMBER: 14448	REVISION: A
FINISH NONE	NEXT ASSY USED ON		ASSEMBLY APPLICATION	CURRENT TIME/DATE/FILE LOCATION: DRAWING ARCHIVE LOCATION: http://devinci1.cs.arizona.edu/ocod/default.html				SHEET 1 OF 1	