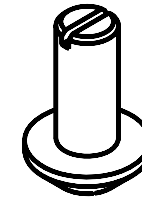
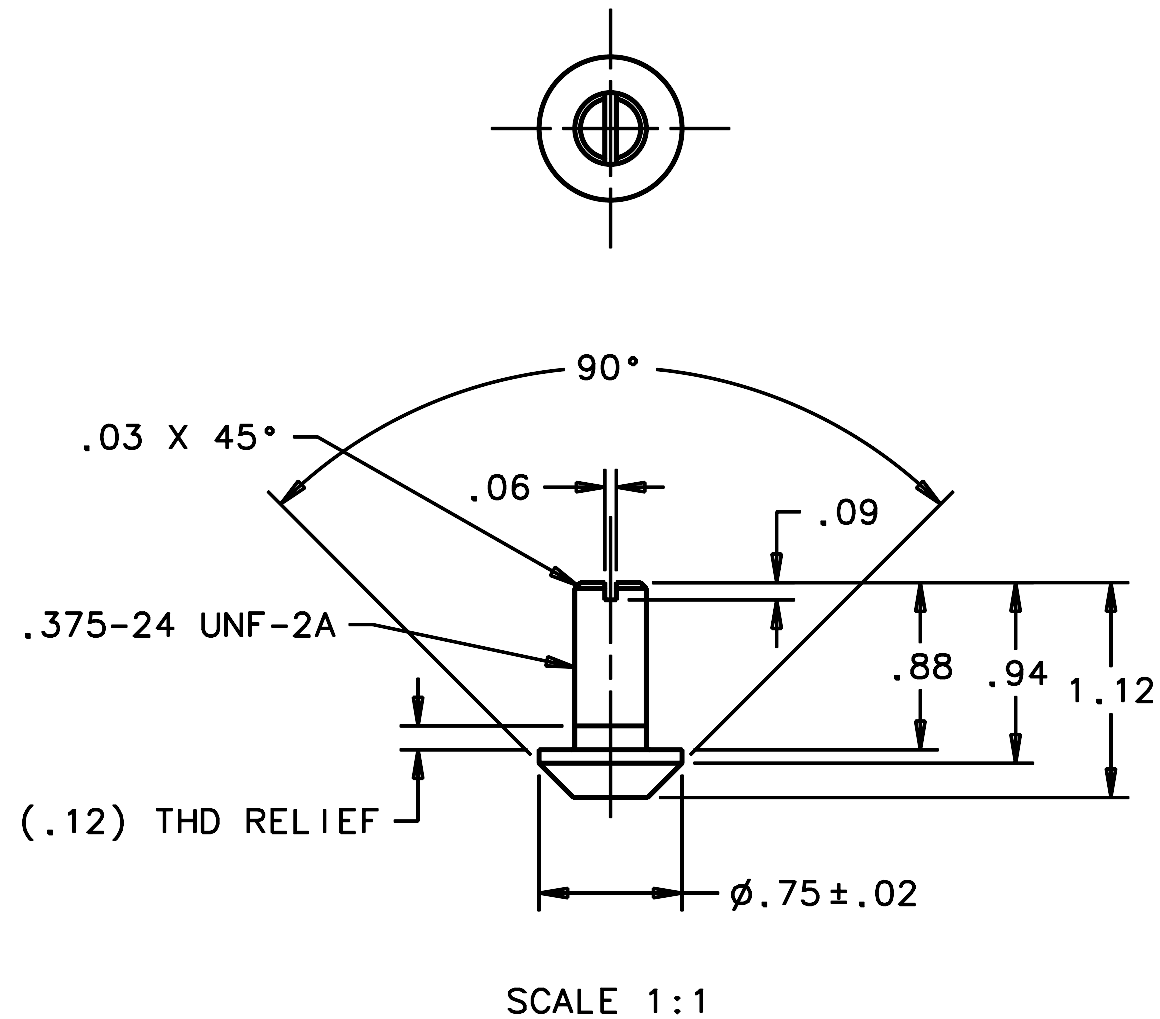


REVISIONS				
LTR	DESCRIPTION	DATE	REVISED BY	APPROVED
A	INITIAL RELEASE	05/11/05	J. BRENNAN	G. LANDIS



SCALE NTS

NOTES:

1. 3 REQUIRED.
2. BREAK SHARP EDGES & DEBURR.
3. MACHINED SURFACE FINISH TO BE 125 RMS OR BETTER.
4. MACHINED FILLETS TO BE R.015 MAX.

DO NOT SCALE DRAWING INTERPRET DIMENSIONS AND TOLERANCES IN ACCORDANCE WITH ASME Y14.5M-94	THIS DRAWING CREATED IN:			Steward Observatory, University of Arizona 933 N. Cherry Avenue, Tucson, AZ 85721 (520)621-7659			
	ACAD <input type="checkbox"/>	MECH <input type="checkbox"/>	IDEAS <input checked="" type="checkbox"/>	DESIGNED BY: S. MATHEWS	DATE: 9/21/04	CATEGORY: MMT	
TOLERANCES UNLESS OTHERWISE SPECIFIED LINEAR ANGULAR .1 = .04 ±1° .05 = .02 .01 = .01				DRAWN BY: R. NAGY	10/7/04	PROJECT: MAESTRO	
				CHECKED BY: G. LANDIS	03/21/05	TITLE: GRATING LATERAL REST PAD	
MATERIAL NYLON 6/6				APPROVED: M. REED	05/11/05		
				APPROVED: J. BECHTOLD	05/11/05		
FINISH NONE				APPROVED: R. WARNER	05/11/05	PLOT SIZE B	SCALE: -
				APPROVED:		DRAWING NUMBER: 14257	REVISION: A
ASSEMBLY APPLICATION				CURRENT TIME/DATE/FILE LOCATION: DRAWING ARCHIVE LOCATION: http://devinci.es.arizona.edu/ocod/default.html			