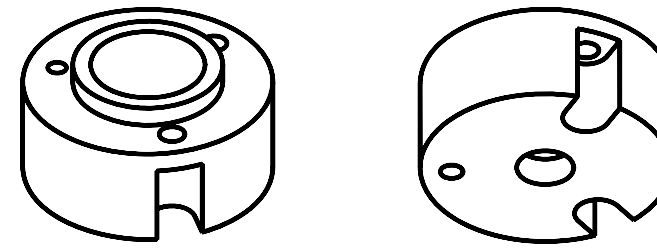
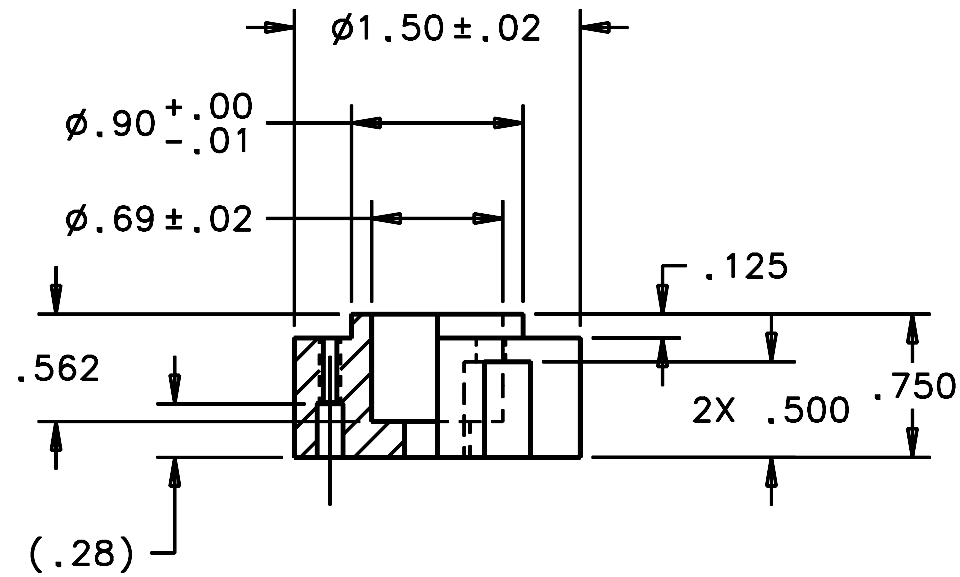
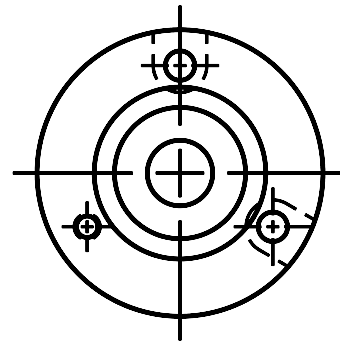


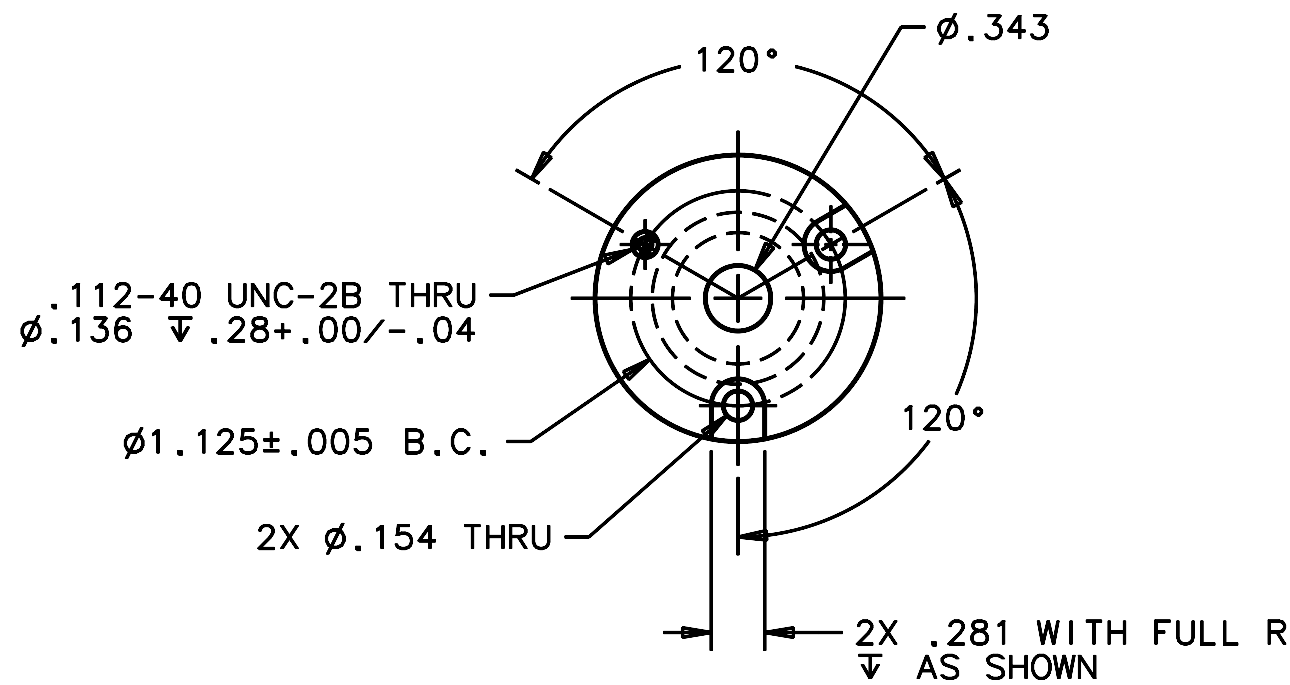
REVISIONS				
LTR	DESCRIPTION	DATE	REVISED BY	APPROVED
A	INITIAL RELEASE	05/09/05	J. BRENNAN	G. LANDIS



SCALE NTS

NOTES:

- 3 REQUIRED.
- BREAK SHARP EDGES & DEBURR.
- MACHINED SURFACE FINISH TO BE 125 RMS OR BETTER.
- MACHINED FILLETS TO BE R.015 MAX.
- 4 ANODIZE PER MIL-A-8625, TYPE II, CLASS 2, BLACK.
- DIMENSIONS ARE PRIOR TO ANODIZING.



SCALE 1:1

DO NOT SCALE DRAWING INTERPRET DIMENSIONS AND TOLERANCES IN ACCORDANCE WITH ASME Y14.5M-94		THIS DRAWING CREATED IN: ACAD <input type="checkbox"/> MECH <input type="checkbox"/> IDEAS <input checked="" type="checkbox"/>		Steward Observatory, University of Arizona 933 N. Cherry Avenue, Tucson, AZ 85721 (520)621-7659			
TOLERANCES UNLESS OTHERWISE SPECIFIED LINEAR .1 - .3 MA ±.01 .3 - .6 MA ±.015 .6 - 1.0 MA ±.02 DIAMETRICAL SEE SPEC S-002		DESIGNED BY: S. MATHEWS		DATE: 9/27/04		CATEGORY: MMT	
MATERIAL 6061-T651 Al		DRAWN BY: R. NAGY		10/6/04		PROJECT: MAESTRO	
FINISH <span style="border: 1px solid black; border-radius: 50%; padding: 2px;">4</span>		CHECKED BY: G. LANDIS		03/21/05		TITLE: GRATING CELL AXIAL ACTUATOR HOUSING CAP	
NEXT ASSY USED ON		APPROVED: M. REED		05/09/05		DRAWING NUMBER: 14203	
ASSEMBLY APPLICATION		APPROVED: J. BECHTOLD		05/09/05		REVISION: A	
CURRENT TIME/DATE/FILE LOCATION:		PLOT SIZE SCALE: B -		DRAWING NUMBER: 14203		REVISION: A	
DRAWING ARCHIVE LOCATION: <a href="http://devinci.es.arizona.edu/ocod/default.html">http://devinci.es.arizona.edu/ocod/default.html</a>		SHEET 1 OF 1					