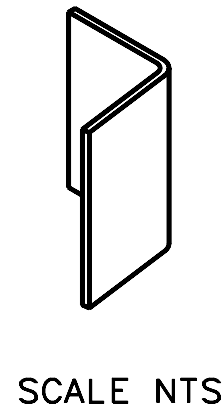
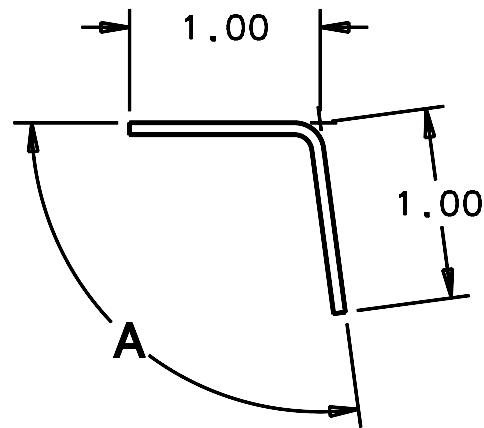
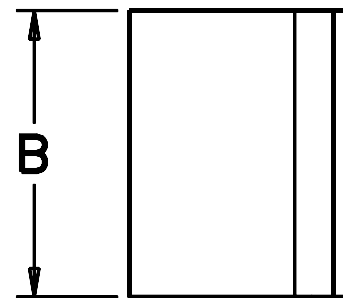


REVISIONS				
LTR	DESCRIPTION	DATE	REVISED BY	APPROVED
A	INITIAL RELEASE	3/22/05	R. NAGY	G. LANDIS



DASH NO.	A	B	QTY REQD PER NEXT ASSEMBLY
-1	98°	1.50	2
-2	114°	2.00	1
-3	114°	3.00	1
-4	90°	3.88	5
-5	90°	5.00	4
-6	114°	5.00	6



-1 SHOWN
SCALE 1:1

NOTES (ALL DASH NUMBERS):

- .06-.12 BEND R.
- BREAK SHARP EDGES.
- HEAT TREATMENT: A. HEAT TREAT AT 315°C FOR 60 MINUTES IN AIR.
B. COOL TO ROOM TEMPERATURE IN AIR.
C. HOLD AT 95°C FOR 49 HOURS IN AIR.
D. COOL TO ROOM TEMPERATURE IN AIR.

	13737-6	INBOARD CORNER CLIP 6 (5.00 x 114°)
	13737-5	INBOARD CORNER CLIP 5 (5.00 x 90°)
	13737-4	INBOARD CORNER CLIP 4 (3.88 x 90°)
	13737-3	INBOARD CORNER CLIP 3 (3.00 x 114°)
	13737-2	INBOARD CORNER CLIP 2 (2.00 x 114°)
	13737-1	INBOARD CORNER CLIP 1 (1.50 x 98°)
-3	-2	-1
QTY PER ASSY	PART NUMBER	PART DESCRIPTION

DO NOT SCALE DRAWING		THIS DRAWING CREATED IN:		Steward Observatory, University of Arizona	
INTERPRET DIMENSIONS AND TOLERANCES IN ACCORDANCE WITH ASME Y14.5M-94		ACAD	MECH	IDEAS	933 N. Cherry Avenue, Tucson, AZ 85721 (520)621-7659
TOLERANCES UNLESS OTHERWISE SPECIFIED		<input type="checkbox"/>	<input type="checkbox"/>	<input checked="" type="checkbox"/>	DESIGNED BY: S. MATHEWS/D. DEAN
LINEAR					DATE: 9/22/03
ANGULAR					CATEGORY: MMT
.X - NA					DRAWN BY: R. NAGY
.XX - .03					DATE: 11/22/04
.XXX - NA					CHECKED BY: G. LANDIS
DIAMETRICAL					DATE: 3/21/05
SEE SPEC S-002					APPROVED: M. REED
MATERIAL					DATE: 3/22/05
INVAR 36 ALLOY, 16 B.G. (.0625)		13435	MMT		APPROVED: J. BECHTOLD
FINISH		NEXT ASSY	USED ON		DATE: 3/22/05
NONE					APPROVED:
ASSEMBLY APPLICATION					APPROVED:
CURRENT TIME/DATE/FILE LOCATION:		PLOT SIZE		SCALE:	DRAWING NUMBER:
DRAWING ARCHIVE LOCATION: http://devinci.observatory.arizona.edu/ocod/default.html		B	-		13737
					REVISION: A