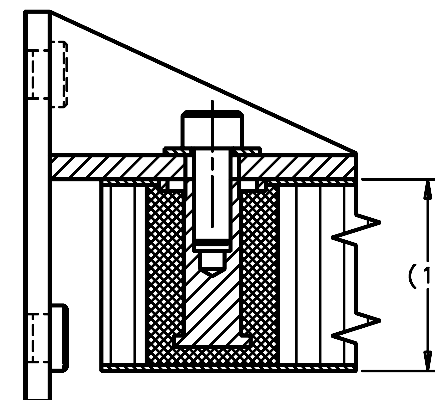
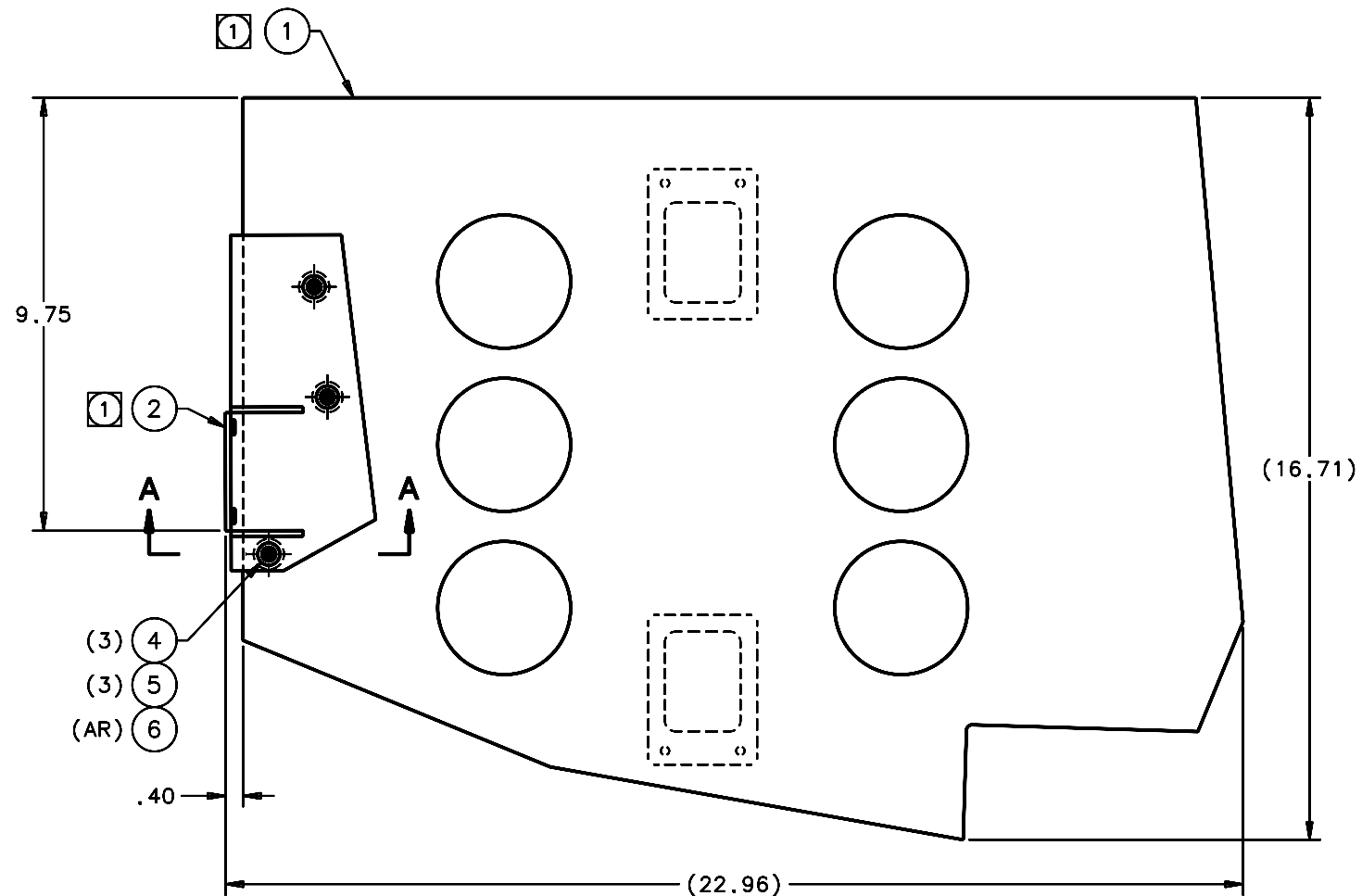
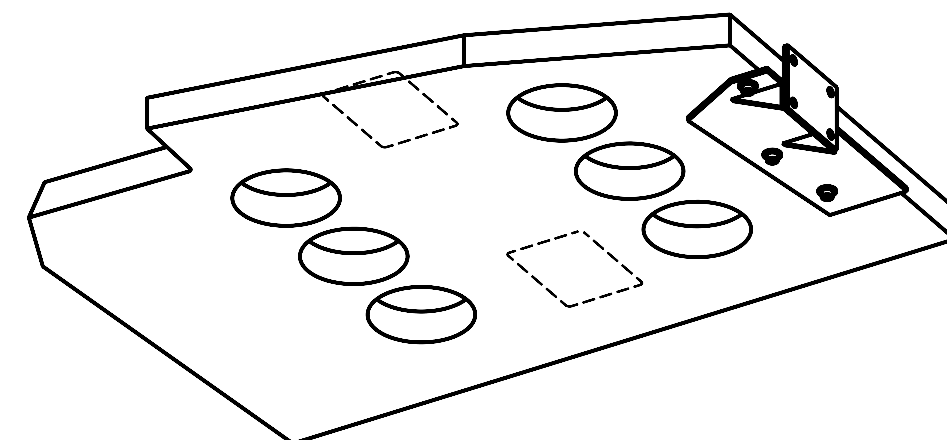


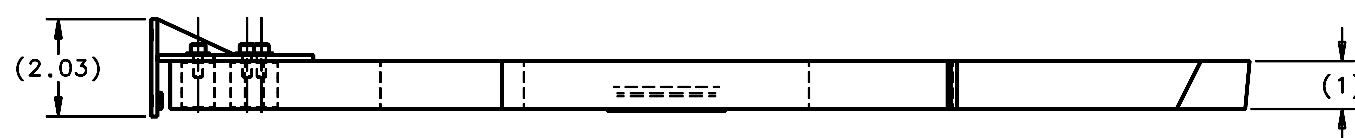
REVISIONS				
LTR	DESCRIPTION	DATE	REVISED BY	APPROVED
A	INITIAL RELEASE	5/9/05	R. NAGY	G. LANDIS



**SECTION A-A**  
SCALE 2:1



SCALE NTS



SCALE 1:2

**NOTES:**

- 1 ALSO BOND ITEM 2 MOUNT TO ITEM 1 MOUNT USING ITEM 7 ADHESIVE.
2. (1) REQUIRED PER NEXT ASSEMBLY.

QTY PER ASSY	-3	-2	-1	PART NUMBER	PART DESCRIPTION	MANUFACTURER or MAT'L SPEC	ITEM NO.
				AR	TBD	ADHESIVE	-
				AR	222	THREADLOCKER	LOCTITE OR EQUIVALENT
				3	98019A333	WASHER, FLAT, #10 x .500 OD, 18-8 SS	McMASTER-CARR
				3	92196A269	SHCS, .190-32 UNF-2A x .500 LG, 18-8 SS	McMASTER-CARR
							3
				1	14187	STEPPER MOTOR MOUNT	2
				1	13719	GRATING CELL MOUNT W/INSERTS	1

DO NOT SCALE DRAWING		THIS DRAWING CREATED IN:		LIST OF MATERIALS				
INTERPRET DIMENSIONS AND TOLERANCES IN ACCORDANCE WITH ASME Y14.5M-94		ACAD	MECH	IDEAS	Steward Observatory, University of Arizona			
TOLERANCES UNLESS OTHERWISE SPECIFIED		<input type="checkbox"/>	<input type="checkbox"/>	<input checked="" type="checkbox"/>	933 N. Cherry Avenue, Tucson, AZ 85721 (520)621-7659			
LINEAR				DESIGNED BY:	DATE:	CATEGORY:		
ANGULAR				S. MATHEWS/R. N.	12/3/04	MMT		
.1				DRAWN BY:	12/7/04	PROJECT:		
.05				R. NAGY		MAESTRO		
.005				CHECKED BY:	3/21/05	TITLE:		
DIAMETRICAL				G. LANDIS		GRATING CELL PLATFORM		
SEE SPEC S-002				APPROVED:	5/9/05	GRATING CELL MOUNT ASSEMBLY		
				M. REED		PLOT SIZE SCALE:		
				J. BECHTOLD	5/9/05	DRAWING NUMBER:		
				APPROVED:		13718		
				APPROVED:		REVISION:		
				APPROVED:		A		
MATERIAL		13435 MMT		CURRENT TIME/DATE/FILE LOCATION:				
-		NEXT ASSY USED ON		DRAWING ARCHIVE LOCATION: <a href="http://devinci.as.arizona.edu/ccad/default.html">http://devinci.as.arizona.edu/ccad/default.html</a>				
FINISH		ASSEMBLY APPLICATION		SHEET 1 OF 1				
-								