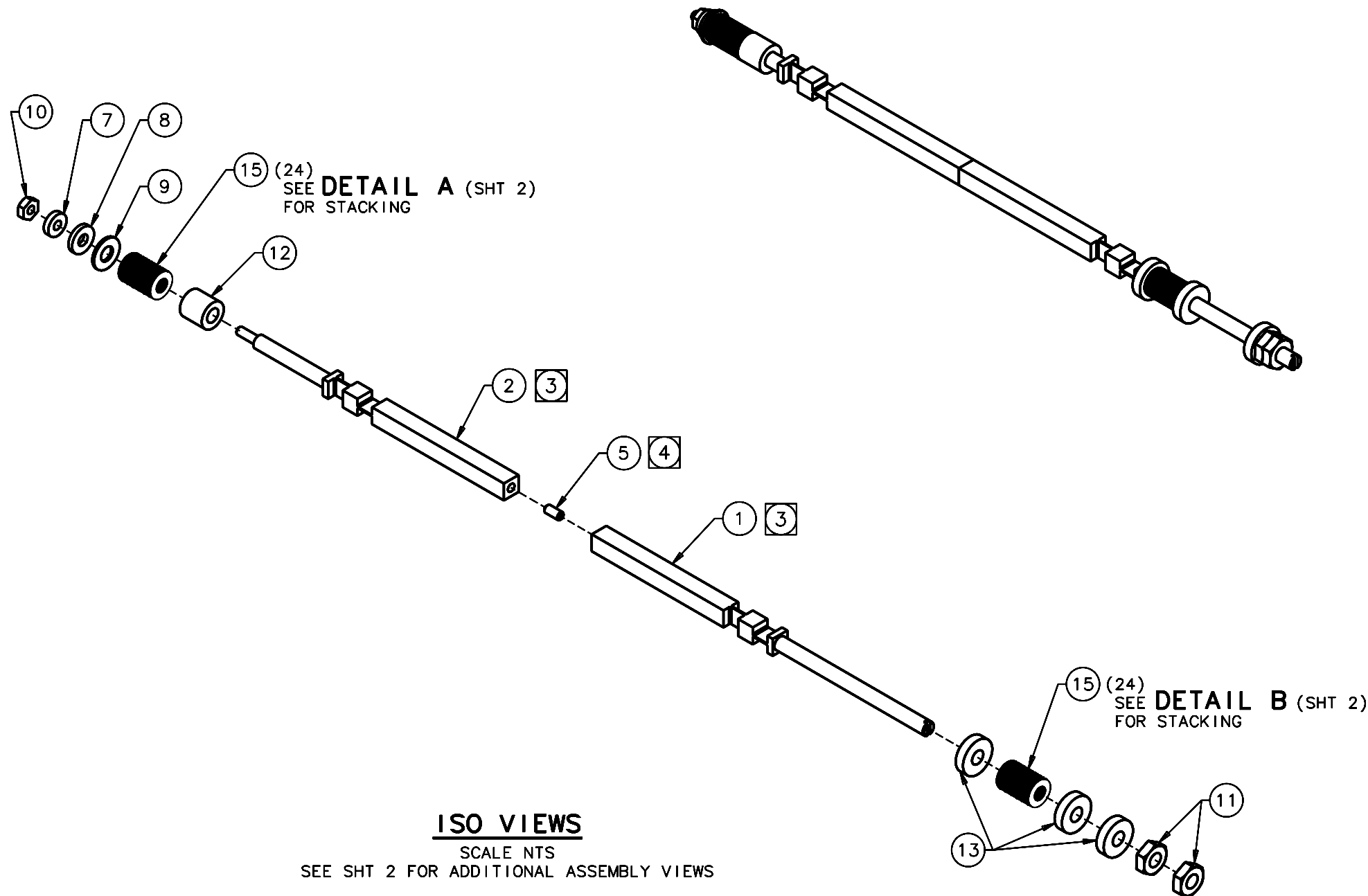


REVISIONS				
LTR	DESCRIPTION	DATE	REVISED BY	APPROVED
A	INITIAL RELEASE	05/09/05	J. BRENNAN	G. LANDIS



ISO VIEWS
SCALE NTS
SEE SHT 2 FOR ADDITIONAL ASSEMBLY VIEWS

QTY PER ASSY	QTY PER ASSY	PART NUMBER	PART DESCRIPTION	MANUFACTURER or MAT'L SPEC	ITEM NO.	
	48	9713K59	BELLEVILLE DISC SPRING, .190 ID x .375 OD x .020 THK, SS	McMASTER-CARR	15	
					14	
	3	92320A237, #10	SPACER, ROUND, UNTHREADED, .5 OD x .125 LG, 18-8 SS	McMASTER-CARR	13	
	1	92320A229, #10	SPACER, ROUND, UNTHREADED, .375 OD x .375 LG, 18-8 SS	McMASTER-CARR	12	
	2	90480A195	NUT, HEX, MACHINE SCREW, .190-32 UNF x .12 H, STL, Zn-PLT	McMASTER-CARR	11	
	1	90480A005	NUT, HEX, MACHINE SCREW, .112-40 UNC x .09 H, STL, Zn-PLT	McMASTER-CARR	10	
	1	92141A011	WASHER, FLAT, #10 x .437 OD x .032 THK, 18-8 SS	McMASTER-CARR	9	
	1	98370A025	WASHER, FLAT, FINISHED, #6 x .375 OD x .078 THK, 18-8 SS	McMASTER-CARR	8	
	1	98370A024	WASHER, FLAT, FINISHED, #4 x .312 OD x .078 THK, 18-8 SS	McMASTER-CARR	7	
					6	
					4	
					3	
	1	13661	LATERAL LINK "B"		2	
	1	13660	LATERAL LINK "A"		1	
-3	-2	-1	PART NUMBER	PART DESCRIPTION	MANUFACTURER or MAT'L SPEC	ITEM NO.

- NOTES:
1. 1 REQUIRED.
 2. DIMENSIONS FOR REF ONLY.
THIS SETUP WILL NEED TO BE DISASSEMBLED & ADJUSTED AS REQD AT ITS NEXT ASSEMBLY.
 - 3 TO PREVENT FLEXING OF ITEMS 1 & 2 LINKS, HANDLE, STORE & SHIP IN A RESTRAINED CONDITION.
 - 4 APPLY A COMPATIBLE ANTISEIZE COMPOUND, IF REQUIRED.

DO NOT SCALE DRAWING INTERPRET DIMENSIONS AND TOLERANCES IN ACCORDANCE WITH ASME Y14.5M-94		THIS DRAWING CREATED IN: ACAD <input type="checkbox"/> MECH <input type="checkbox"/> IDEAS <input checked="" type="checkbox"/>		Steward Observatory, University of Arizona 933 N. Cherry Avenue, Tucson, AZ 85721 (520)621-7659	
TOLERANCES UNLESS OTHERWISE SPECIFIED LINEAR .1 - NA .01 - NA .001 - NA ANGULAR NA		DESIGNED BY: S. MATHEWS	DATE: 8/27/04	CATEGORY: MMT	
DIAMETRICAL SEE SPEC S-002		DRAWN BY: R. NAGY	10/26/04	PROJECT: MAESTRO	
MATERIAL		CHECKED BY: G. ALNDIS	03/21/05	TITLE: GRATING LATERAL SUPPORT LINK ASSEMBLY	
FINISH		APPROVED BY: M. REED	05/09/05	DRAWING NUMBER: 13658	
ASSEMBLY APPLICATION		APPROVED BY: J. BECHTOLD	05/09/05	REVISION: A	
CURRENT TIME/DATE/FILE LOCATION:		DRAWING ARCHIVE LOCATION: http://devincl.as.arizona.edu/ccad/default.html		SHEET 1 OF 2	