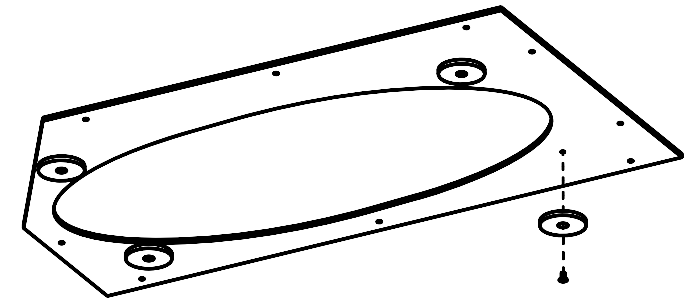
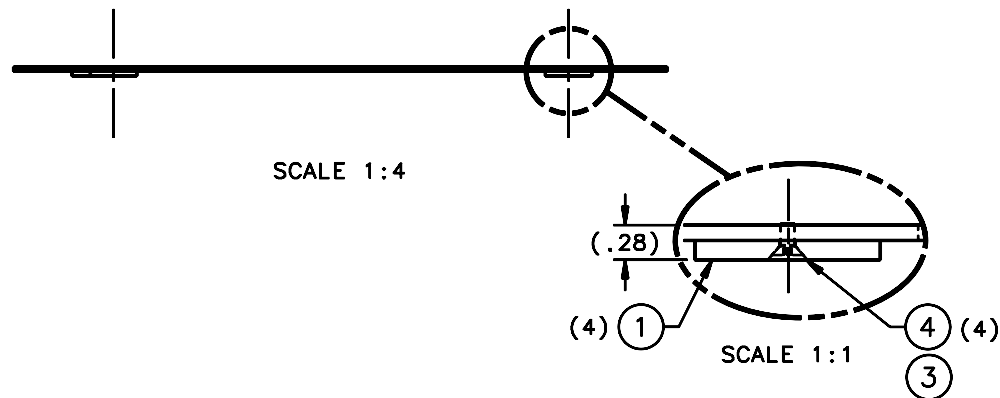
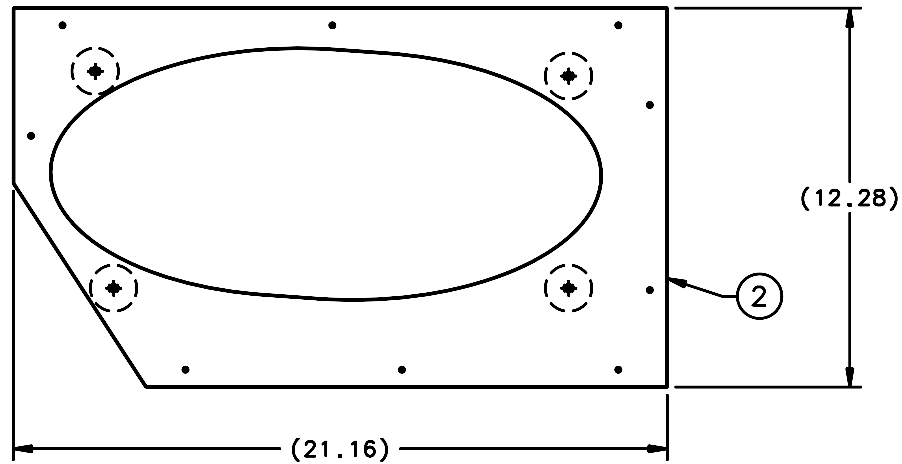







REVISIONS				
LTR	DESCRIPTION	DATE	REVISED BY	APPROVED
A	INITIAL RELEASE	05/08/06	J. BRENNAN	G. LANDIS



SCALE NTS

	4	92210A105	SHCS, 82" FLAT HD, .112-40 UNC-2A x .25 LG, 18-8 SST	McMASTER-CARR	4	
	AR	222	THREADLOCKER	LOCTITE OR EQUIVALENT	3	
	1	14259	GRATING BAFFLE		2	
	4	14258	TOP AXIAL REST PAD		1	
			PART NUMBER	PART DESCRIPTION	MANUFACTURER or MAT'L SPEC	100 LBS.
			QTY PER ASSY			

DO NOT SCALE DRAWING		THIS DRAWING CREATED IN:		 Steward Observatory, University of Arizona 933 N. Cherry Avenue, Tucson, AZ 85721 (520)621-7659			
INTERPRET DIMENSIONS AND TOLERANCES IN ACCORDANCE WITH ASME Y14.5M-94		ACAD <input type="checkbox"/>	MECH <input type="checkbox"/>	IDEAS <input checked="" type="checkbox"/>	DESIGNED BY: R. NAGY	DATE: 10/27/04	CATEGORY: MMT
TOLERANCES UNLESS OTHERWISE SPECIFIED LINEAR ANGULAR .± = NA .XX = NA .XXX = NA					DRAWN BY: R. NAGY	11/4/04	PROJECT: MAESTRO
DIAMETRICAL SEE SPEC 5-002					CHECKED BY: G. LANDIS	03/21/05	TITLE: GRATING BAFFLE ASSEMBLY
<small>UNLESS NOTED OR INDICATED BY THE SYMBOL</small>					APPROVED: M. REED	05/09/05	
MATERIAL -		13434	MMT-MAESTRO	APPROVED: R. WARNER	05/09/05	PLOT SIZE SCALE: B -	DRAWING NUMBER: 13609
FINISH -		NEXT ASSY USED ON		APPROVED: 			REVISION: A
ASSEMBLY APPLICATION		CURRENT TIME/DATE/FILE LOCATION: DRAWING ARCHIVE LOCATION: http://steward.observ.az.univ.edu/observ/teal/teal.html			SHEET 1 OF 1		

NOTES:
1. 1 REQUIRED.