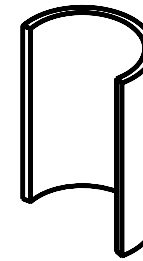
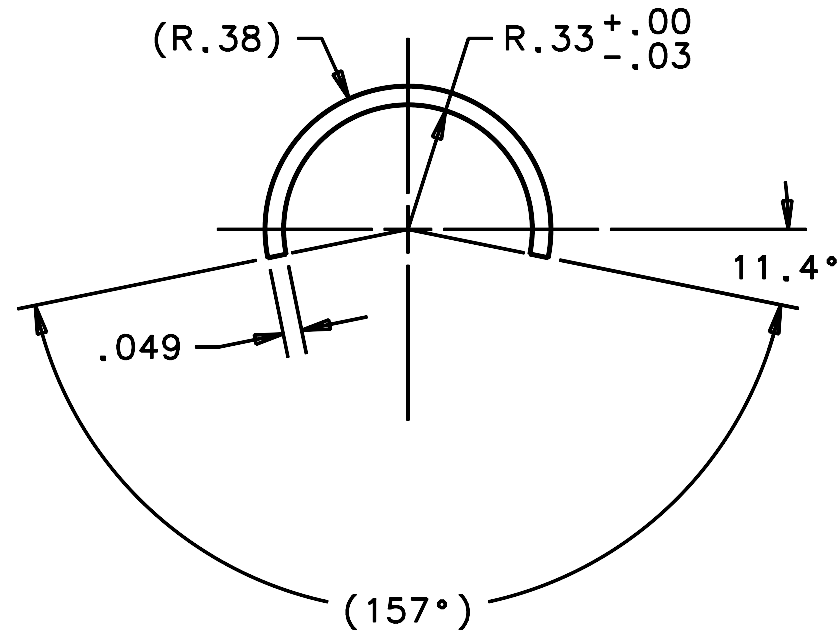
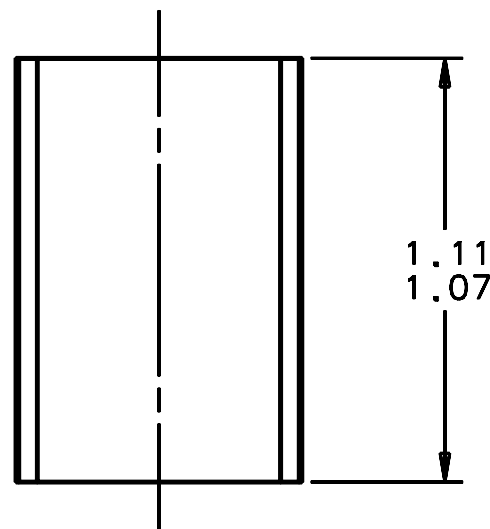


REVISIONS				
LTR	DESCRIPTION	DATE	REVISED BY	APPROVED
A	INITIAL RELEASE	05/11/05	J. BRENNAN	G. LANDIS



SCALE 1:1



SCALE 2:1

NOTES:

- 3 REQUIRED.
- BREAK SHARP EDGES & DEBURR.
- MACHINED SURFACE FINISH TO BE 125 RMS OR BETTER.
- ANODIZE PER MIL-A-8625, TYPE II, CLASS 2, BLACK.
- DIMENSIONS ARE PRIOR TO ANODIZING.

DO NOT SCALE DRAWING INTERPRET DIMENSIONS AND TOLERANCES IN ACCORDANCE WITH ASME Y14.5M-94		THIS DRAWING CREATED IN: ACAD <input type="checkbox"/> MECH <input type="checkbox"/> IDEAS <input checked="" type="checkbox"/>		Steward Observatory, University of Arizona 933 N. Cherry Avenue, Tucson, AZ 85721 (520)621-7659					
TOLERANCES UNLESS OTHERWISE SPECIFIED LINEAR .X - NA .XX - NA .XXX - NA ANGULAR ±1° DIAMETRICAL SEE SPEC S-002				DESIGNED BY: S. MATHEWS	DATE: 9/15/04	CATEGORY: MMT			
				DRAWN BY: R. NAGY	10/7/04	PROJECT: MAESTRO			
				CHECKED BY: G. LANDIS	03/21/05	TITLE: GRATING CELL AXIAL ACTUATOR HUB CLOSEOUT			
				APPROVED: M. REED	05/11/05				
				APPROVED: J. BECHTOLD	05/11/05				
MATERIAL Ø.750 OD X .049 WALL THK 6061-T6		13595	MMT-MAESTRO	APPROVED: R. WARNER	05/11/05	PLOT SIZE B	SCALE: -	DRAWING NUMBER: 13604	REVISION: A
FINISH 4		NEXT ASSY USED ON		CURRENT TIME/DATE/FILE LOCATION:				SHEET 1 OF 1	
		ASSEMBLY APPLICATION		DRAWING ARCHIVE LOCATION: <a href="http://devinci.cs.arizona.edu/ocod/default.html">http://devinci.cs.arizona.edu/ocod/default.html</a>					