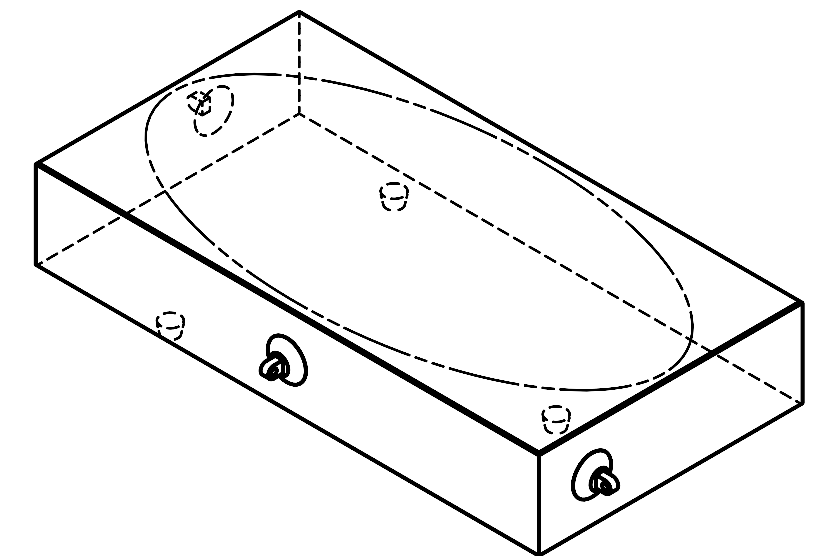
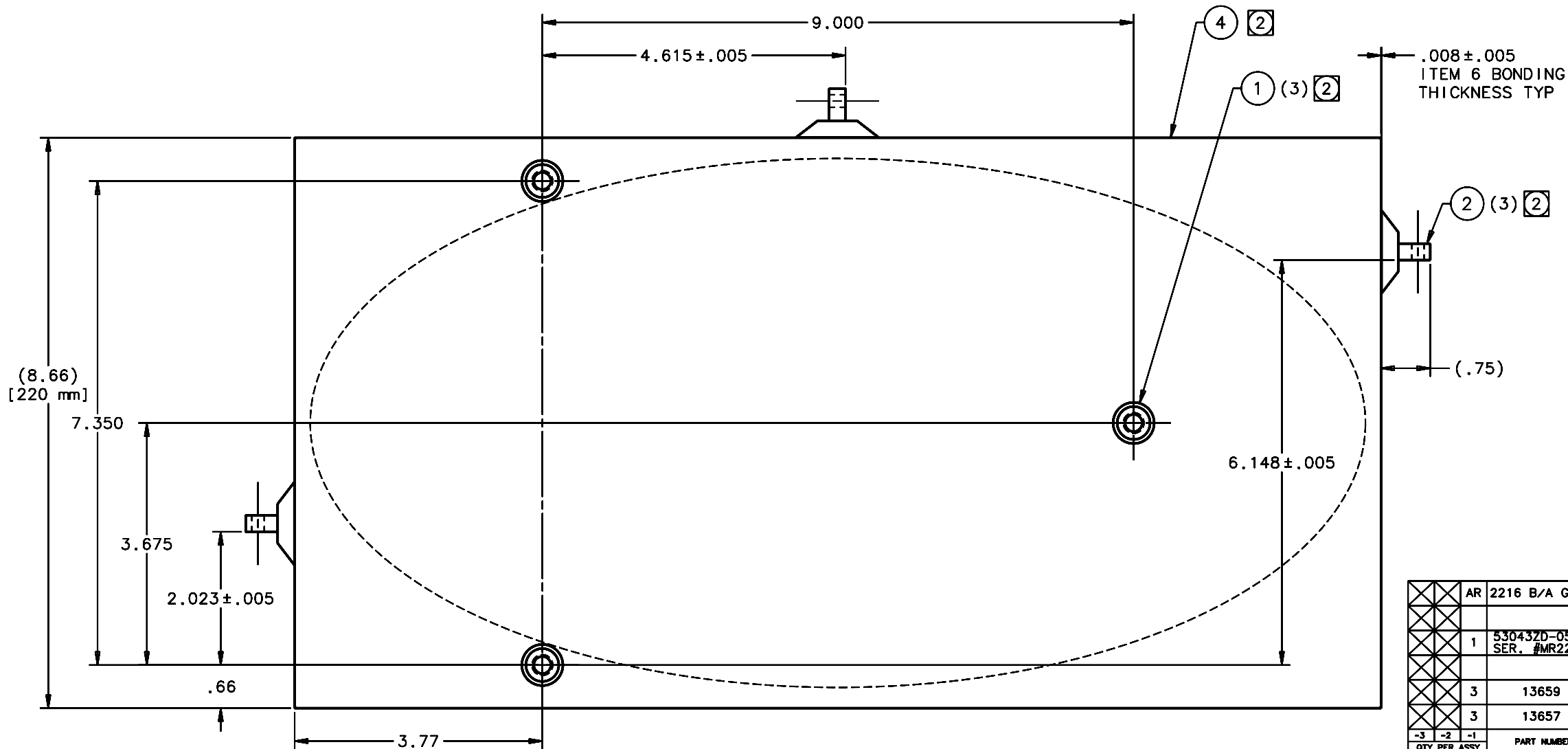
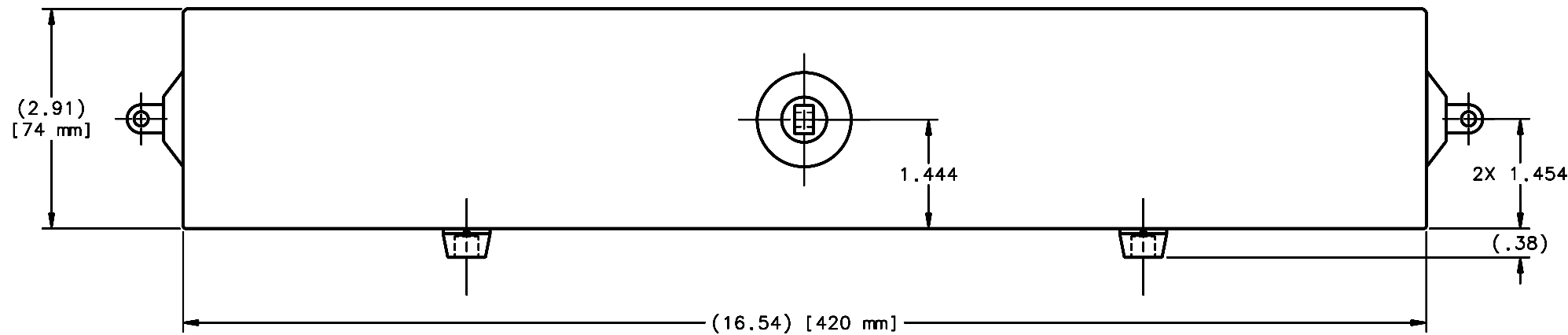


REVISIONS				
LTR	DESCRIPTION	DATE	REVISED BY	APPROVED
A	INITIAL RELEASE	05/18/05	J. BRENNAN	G. LANDIS



SCALE NTS

QTY PER ASSY	-3	-2	-1	PART NUMBER	PART DESCRIPTION	MANUFACTURER or MAT'L SPEC	ITEM NO.
				AR 2216 B/A GRAY	EPOXY ADHESIVE	3M, SCOTCH-WELD	6
				1	530432D-0500, SER. #MR221-1	RICHARDSON GRATING LABORATORY	4
				3	13659	LATERAL LOAD PUCK	2
				3	13657	AXIAL LOAD PUCK	1

LIST OF MATERIALS

DO NOT SCALE DRAWING INTERPRET DIMENSIONS AND TOLERANCES IN ACCORDANCE WITH ASME Y14.5M-94		THIS DRAWING CREATED IN: ACAD <input type="checkbox"/> MECH <input type="checkbox"/> IDEAS <input checked="" type="checkbox"/>		Steward Observatory, University of Arizona 933 N. Cherry Avenue, Tucson, AZ 85721 (520)621-7659	
TOLERANCES UNLESS OTHERWISE SPECIFIED LINEAR ANGLULAR .1 - .5 HA .01 .1XX - .501 .01 .1XXX - .5003 .003 DIAMETRICAL SEE SPEC S-002		DESIGNED BY: S. MATHEWS	DATE: 9/27/04	CATEGORY: MMT	
MATERIAL -		DRAWN BY: R. NAGY	10/11/04	PROJECT: MAESTRO	
FINISH -		CHECKED BY: G. LANDIS	03/21/05	TITLE: GRATING ASSEMBLY	
ASSEMBLY APPLICATION		APPROVED: M. REED	05/09/05	DRAWING NUMBER: 13600	
CURRENT TIME/DATE/FILE LOCATION:		APPROVED: J. BECHTOLD	05/09/05	REVISION: A	
DRAWING ARCHIVE LOCATION: http://dovinci.as.arizona.edu/ccad/default.html		APPROVED: R. WARNER	05/09/05	PLOT SIZE SCALE: D -	

SCALE 1:1

NOTES:

1. REQUIRED DOCUMENTS:

A. SP14099 MAESTRO SYSTEM ALIGNMENT

- ② ITEM 4 GRATING MUST BE CORRECTLY ORIENTED PER ABOVE DOCUMENT BEFORE BONDING ITEMS 1 & 2 PUCKS IN PLACE USING ITEM 6 ADHESIVE.