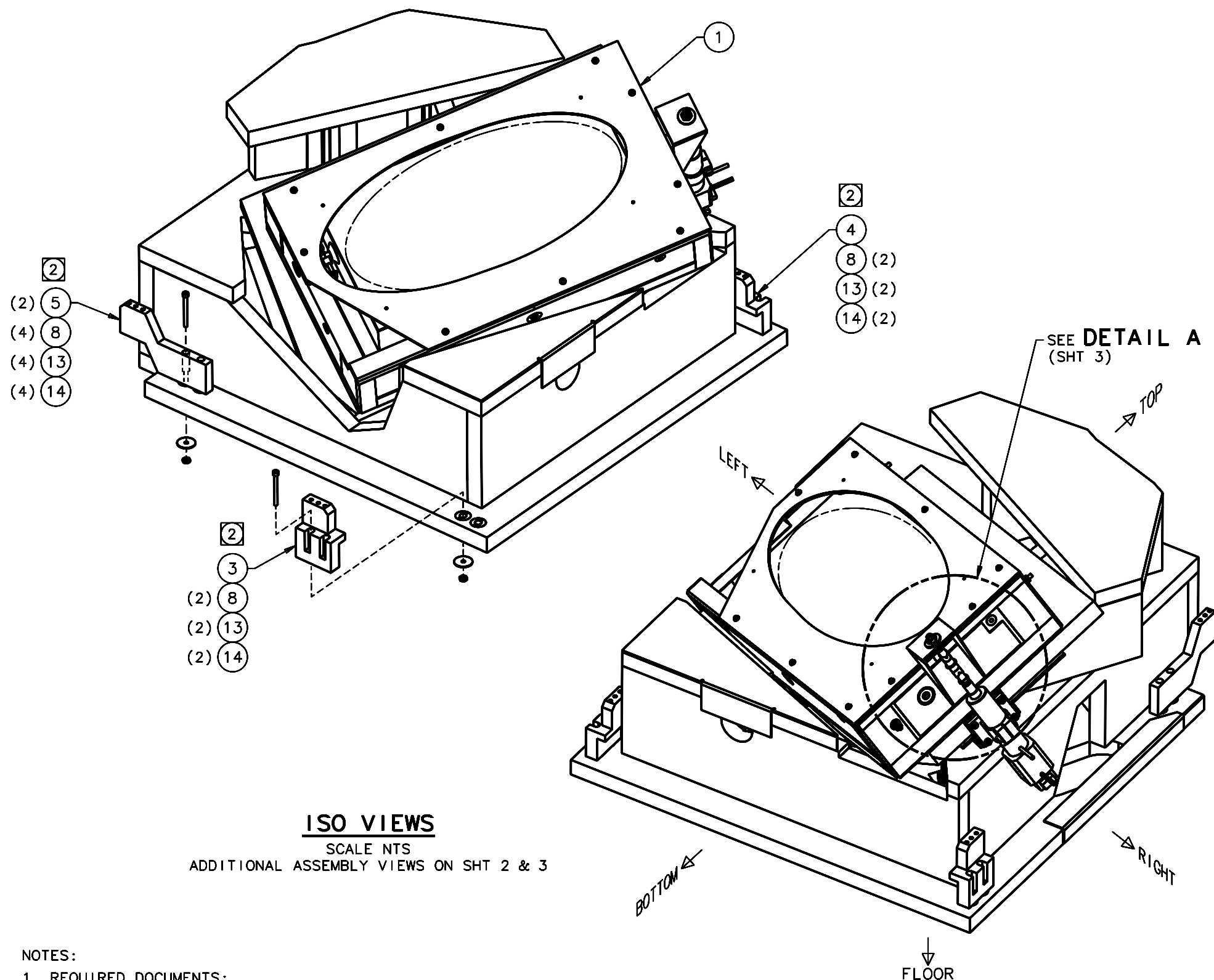


REVISIONS				
LTR	DESCRIPTION	DATE	REVISED BY	APPROVED
A	INITIAL RELEASE	5/2/05	R. NAGY	G. LANDIS
B	UPDATED FOR ITEMS 1, 3, 4, & 5 REVISIONS	9/21/05	R. NAGY	W. DAVISON



ISO VIEWS
SCALE NTS
ADDITIONAL ASSEMBLY VIEWS ON SHT 2 & 3

NOTES:

1. REQUIRED DOCUMENTS:
 - A. SP14099 MAESTRO SYSTEM ALIGNMENT
- 2 ASSEMBLE ITEMS 3, 4, & 5 LOOSE FOR ADJUSTMENT AT NEXT ASSEMBLY.
- 3 APPLY WHERE SHOWN IN DETAIL A (SHT 3):
 - A. A COMPATIBLE ANTISEIZE COMPOUND, IF REQUIRED.
 - B. ITEM 18 THREADLOCKER.
- 4 ITEM 16 FLEXIBLE TIPS MUST BE PARALLEL WHEN TIGHTENED TO EACH OTHER AT ASSEMBLY AS SHOWN IN DETAIL A (SHT 3):
IF SO, ITEM 17 SHIM IS NOT REQUIRED.
IF TIPS ARE NOT PARALLEL:
USE ITEM 17 SHIM & PEEL OFF ITS LAMINATIONS AS REQUIRED TO ADJUST TIPS PARALLEL.

QTY PER ASSY	-3	-2	-1	PART NUMBER	PART DESCRIPTION	MANUFACTURER or MAT'L SPEC	ITEM NO.
				AR 242	THREADLOCKER	LOCTITE OR EQUIVALENT	18
				1 90805A161	LAMINATED SHIM, .375 ID x .625 OD x .032 THK [(16) .002 SHIMS], ALUM	McMASTER-CARR	17
				2 P-176.60	FLEXIBLE TIP	PHYSIK INSTRUMENTE	16
				1 D-A.083AB-HT17E5-2-2M0-P-B/4	STEPPER MOTOR, NEMA 17, ANTI-BACKLASH, .0833"/REV, 2" STROKE	ULTRAMOTION	15
				8 90480A195	NUT, HEX, MACHINE SCREW, .190-32 UNF-2B x .12 H, STL, Zn PLT	McMASTER-CARR	14
				8 90313A104	WASHER, FENDER, #10 x 1.000 OD x .046, 18-8 SS	McMASTER-CARR	13
				3 90695A040	NUT, HEX, THIN, (JAM), M8x1.25 (METRIC) x 4mm H, STL, Zn-PLT	McMASTER-CARR	12
				2 91116A160	WASHER, FENDER, M8 (METRIC) x 24mm (.944") OD x 2mm (.078"), 18-8 SS	McMASTER-CARR	11
				1 92015A150	SETSCREW, CUP POINT, HEX SKT, M8 x 1.25 x 40mm LG, 18-8 SS	McMASTER-CARR	10
				1 92015A143	SETSCREW, CUP POINT, HEX SKT, M8 x 1.25 x 16mm LG, 18-8 SS	McMASTER-CARR	9
				8 92196A279	SHCS, .190-32 UNF-2A x 2.000 LG, 18-8 SS	McMASTER-CARR	8
				4 92196A271	SHCS, .190-32 UNF-2A x .625 LG, 18-8 SS	McMASTER-CARR	7
							6
				2 14442	CORNER CONNECTION BLOCK-TOP		5
				1 14441	CORNER CONNECTION BLOCK-BOTTOM RIGHT		4
				1 14440	CORNER CONNECTION BLOCK-BOTTOM LEFT		3
				1 14199	THREADED ADAPTER-M8x.250-28		2
				1 13677	GRATING CELL & PLATFORM SETUP ASSEMBLY		1

DO NOT SCALE DRAWING INTERPRET DIMENSIONS AND TOLERANCES IN ACCORDANCE WITH ASME Y14.5M-94		THIS DRAWING CREATED IN: ACAD <input type="checkbox"/> MECH <input type="checkbox"/> IDEAS <input checked="" type="checkbox"/>		Steward Observatory, University of Arizona 933 N. Cherry Avenue, Tucson, AZ 85721 (520)621-7659	
TOLERANCES UNLESS OTHERWISE SPECIFIED LINEAR .1 .XX .XXX ANGULAR NA DIAMETRICAL SEE SPEC S-002		DESIGNED BY: D. DEAN/S.M.	DATE: 11/17/04	CATEGORY: MMT	
MATERIAL -		DRAWN BY: R. NAGY	12/14/04	PROJECT: MAESTRO	
FINISH -		CHECKED BY: G. LANDIS	3/21/05	TITLE: GRATING CELL & PLATFORM TOP ASSEMBLY	
ASSEMBLY APPLICATION		APPROVED: M. REED	5/2/05	PLOT SIZE SCALE: D -	
CURRENT TIME/DATE/FILE LOCATION:		APPROVED: J. BECHTOLD	5/2/05	DRAWING NUMBER: 13425	
DRAWING ARCHIVE LOCATION: http://dovinci.as.arizona.edu/cccd/default.html		APPROVED:		REVISION: B	