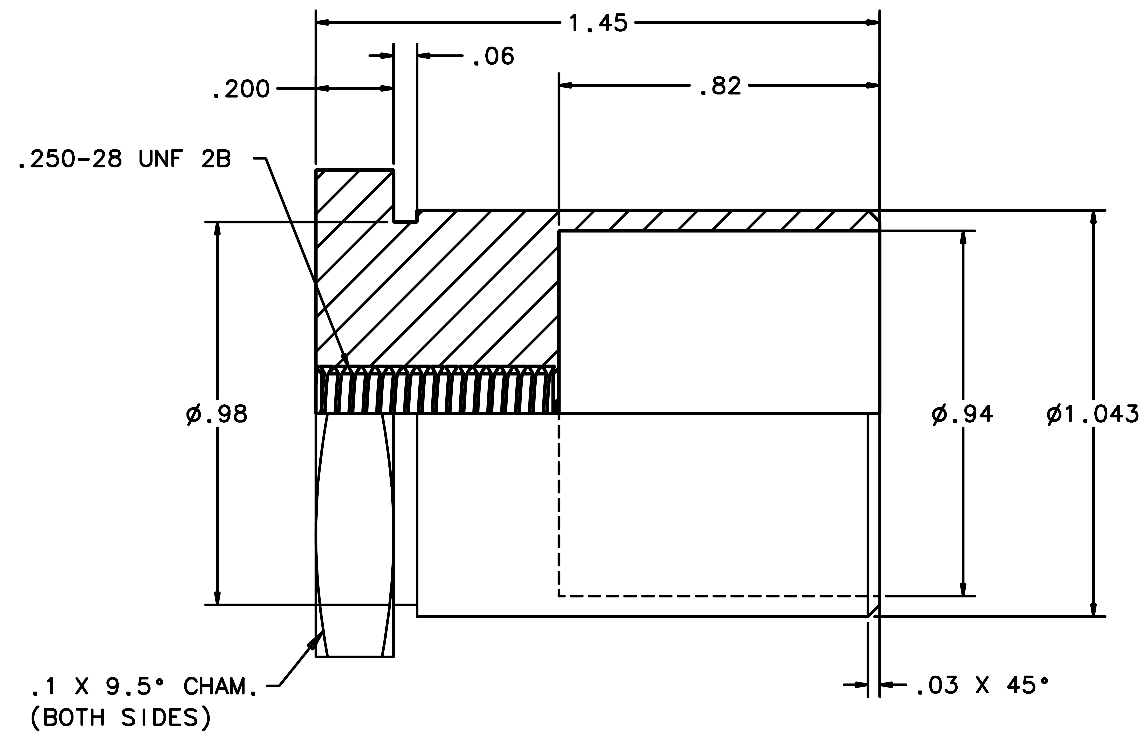
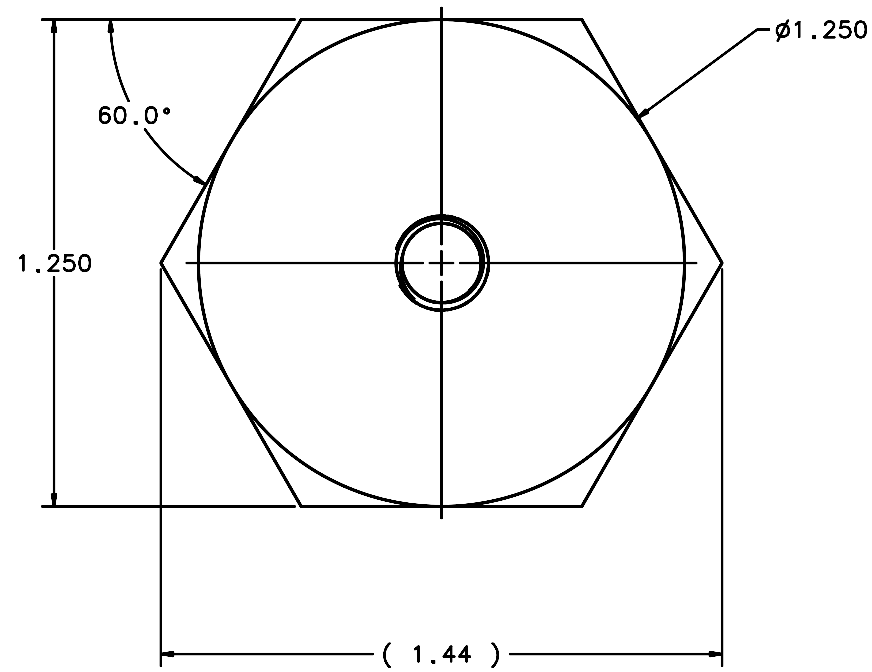
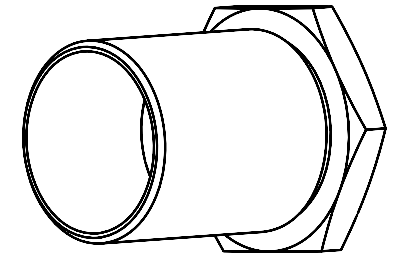


REVISIONS				
LTR	DESCRIPTION	DATE	REVISED BY	APPROVED
A	INITIAL RELEASE	04/22/05	J. BRENNAN	G. LANDIS



SCALE 4:1



1 REQUIRED

NOTES:

- BREAK SHARP EDGES & DEBUR.
- MACHINE SURFACE FINISH TO BE 125 RMS.
- ANODIZE PER MIL-A-8625, TYPE II, CLASS 2 (DYED: BLACK, GREEN, RED, ETC.).
- ALL DIMENSIONS ARE BEFORE ANODIZING.

DO NOT SCALE DRAWING INTERPRET DIMENSIONS AND TOLERANCES IN ACCORDANCE WITH ASME Y14.5M-94		THIS DRAWING CREATED IN: ACAD <input type="checkbox"/> MECH <input type="checkbox"/> IDEAS <input checked="" type="checkbox"/>		Steward Observatory, University of Arizona 933 N. Cherry Avenue, Tucson, AZ 85721 (520)621-7659	
TOLERANCES UNLESS OTHERWISE SPECIFIED LINEAR .X = ± .02 .XX = ± .008 .XXX = ± .008 ANGULAR ± 1/2° DIAMETRICAL SEE SPEC S-002		DESIGNED BY: S. MATHEWS	DATE: 10/15/04	CATEGORY: MMT	
MATERIAL 6061-T6 ALUMINUM ALLOY		DRAWN BY: D. DEAN	12/21/04	PROJECT: MAESTRO	
FINISH 3		CHECKED BY: G. LANDIS	03/21/05	TITLE: DEWAR MOUNTING RH END FTG .25 THD	
ASSEMBLY APPLICATION		APPROVED: J. BECHTOLD	04/22/05	REVISION: A	
		APPROVED: R. WARNER	04/22/05	PLOT SIZE SCALE: D -	DRAWING NUMBER: 14503
		CURRENT TIME/DATE/FILE LOCATION:		SHEET 1 OF 1	
		DRAWING ARCHIVE LOCATION: http://davin1.us.arizona.edu/acad/default.html			