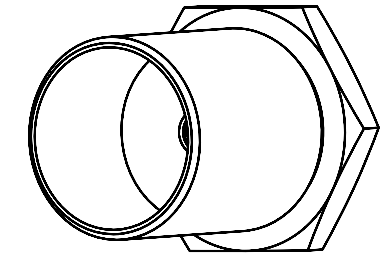
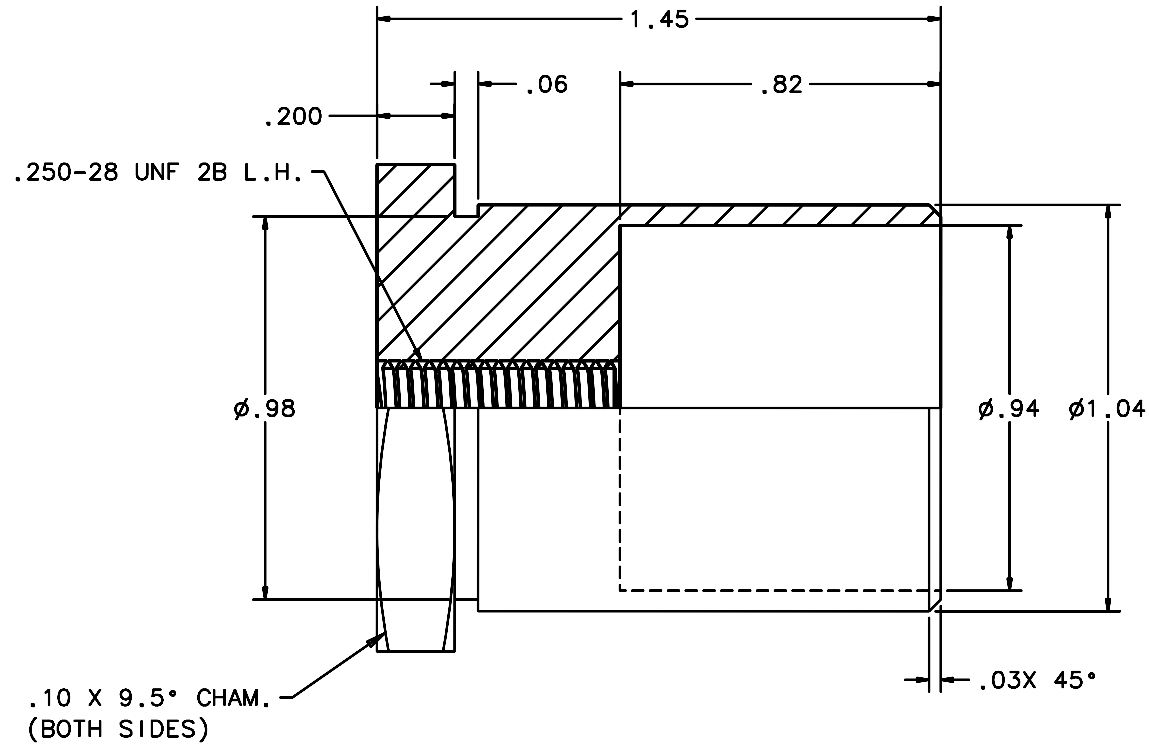
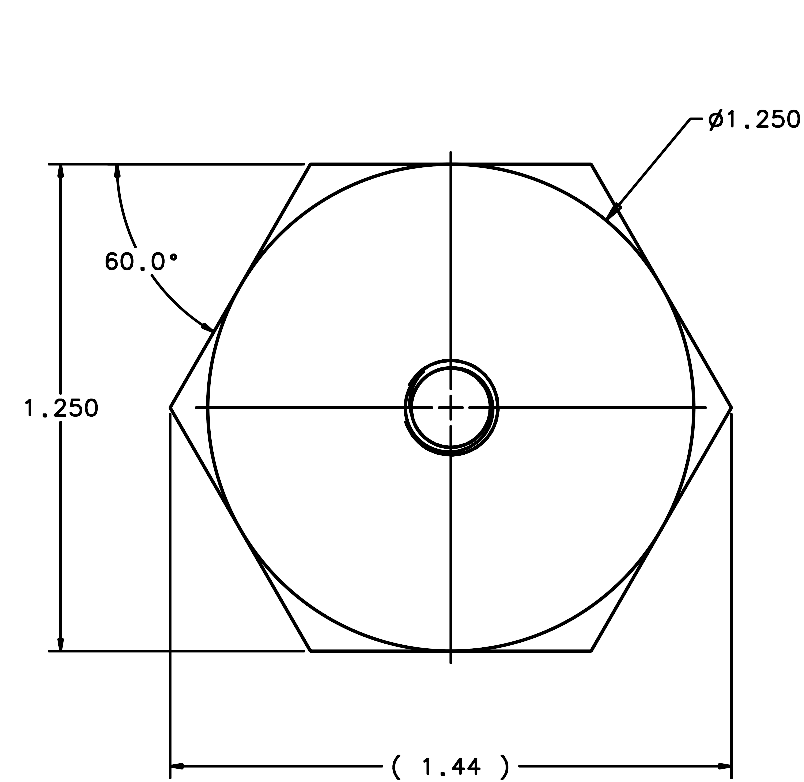


REVISIONS				
LTR	DESCRIPTION	DATE	REVISD BY	APPROVED
A	INITIAL RELEASE	04/22/05	J. BRENNAN	G. LANDIS



SCALE 4:1

1 REQUIRED

NOTES:

- BREAK SHARP EDGES & DEBUR.
- MACHINE SURFACE FINISH TO BE 125 RMS.
- ANODIZE PER MIL-A-8625, TYPE II, CLASS 2 (DYED: BLACK, GREEN, RED, ETC.).
- ALL DIMENSIONS ARE BEFORE ANODIZING.

DO NOT SCALE DRAWING INTERPRET DIMENSIONS AND TOLERANCES IN ACCORDANCE WITH ASME Y14.5M-94		THIS DRAWING CREATED IN: ACAD <input type="checkbox"/> MECH <input type="checkbox"/> IDEAS <input checked="" type="checkbox"/>		Steward Observatory, University of Arizona 933 N. Cherry Avenue, Tucson, AZ 85721 (520)621-7659	
TOLERANCES UNLESS OTHERWISE SPECIFIED LINEAR .1 - ± .02 .01 - ± .008 ANGULAR ± 1/2° DIAMETRICAL SEE SPEC S-002		DESIGNED BY: S. MATHEWS DATE: 10/15/04		CATEGORY: MMT	
DIMENSIONS ARE IN INCHES / DIMENSIONS IN 1.1 ARE METRIC		DRAWN BY: D. DEAN DATE: 12/19/04		PROJECT: MAESTRO	
MATERIAL 6061-T6 ALUMINUM ALLOY		CHECKED BY: G. LANDIS DATE: 03/21/05		TITLE: DEWAR MOUNTING LH END FTG .25 THD	
FINISH 3		APPROVED: J. BECHTOLD DATE: 04/22/05		PLOT SIZE SCALE: D -	
ASSEMBLY APPLICATION		APPROVED: R. WARNER DATE: 04/22/05		DRAWING NUMBER: 14502	
CURRENT TIME/DATE/FILE LOCATION:		DRAWING ARCHIVE LOCATION: http://davinci.as.arizona.edu/acad/default.html		REVISION: A	
				SHEET 1 OF 1	