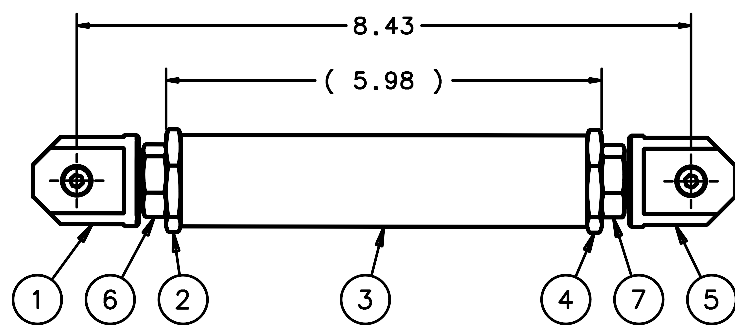
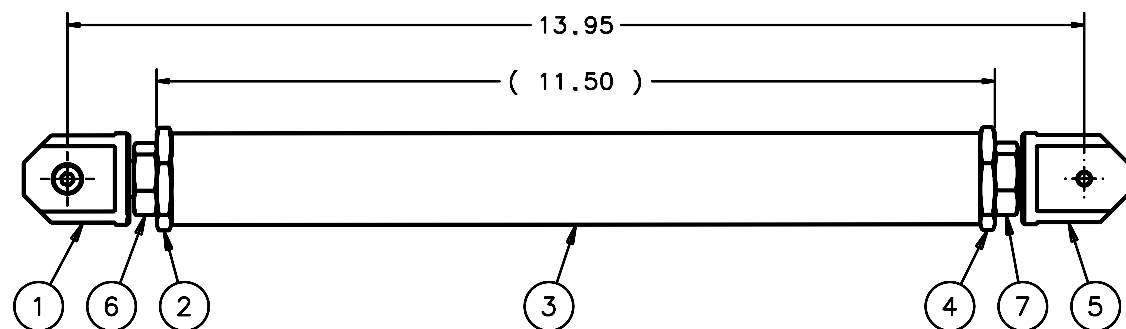


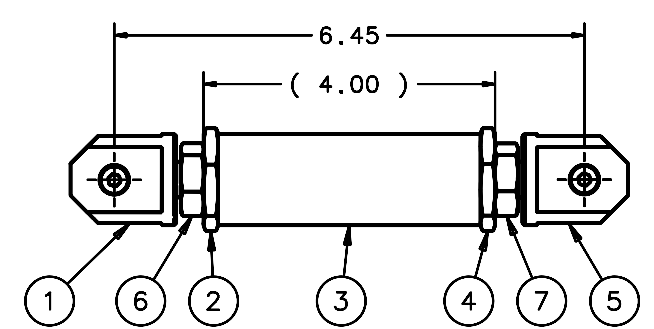
REVISIONS				
LTR	DESCRIPTION	DATE	REVISED BY	APPROVED
A	INITIAL RELEASE	04/22/05	J. BRENNAN	G. LANDIS



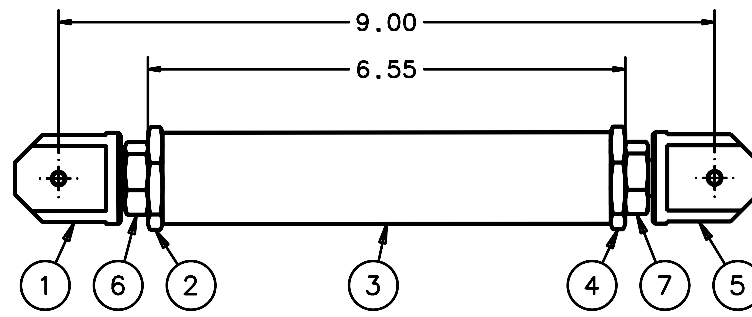
STRUT ASSY UPR AFT (17)



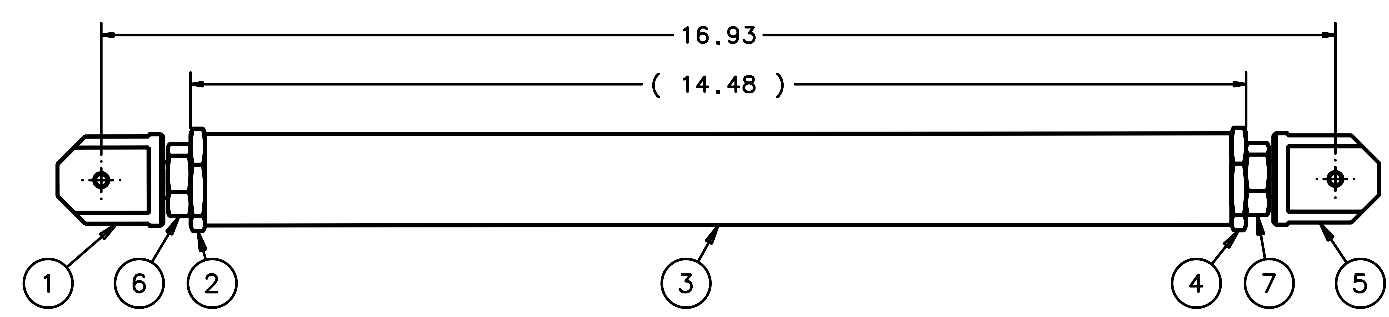
STRUT ASSY UPR MID (15)



STRUT ASSY UPR FWD (14)



STRUT ASSY LWR AFT (16)



STRUT ASSY LWR FRD (13)

SCALE .75:1

- NOTES:
- ASSEMBIES PER SCOTT MATHEWS.
 - PARTS CALLED OUT FROM McMASTER CARR CAN BE EQUIVALENT.

QTY PER ASSY	-3	-2	-1	PART NUMBER	PART DESCRIPTION	MANUFACTURER or MAT'L SPEC	ITEM NO.
X				91847A429	1/2-20 X 5/16" HEX JAM NUT	McMASTER CARR	7
X				94450A280	L.H. 1/2-20 X 5/16" HEX JAM NUT	McMASTER CARR	6
X				14493	DEWAR RH TUBE FTG CLEVIS	X	5
X				14492	DEWAR RH TUBE END FTG	X	4
X				13449	DEWAR TUBE	X	3
X				14490	DEWAR LH TUBE END FTG	X	2
X				14491	DEWAR LH TUBE FTG CLEVIS	X	1

DO NOT SCALE DRAWING INTERPRET DIMENSIONS AND TOLERANCES IN ACCORDANCE WITH ASME Y14.5M-94		THIS DRAWING CREATED IN: ACAD <input type="checkbox"/> MECH <input type="checkbox"/> IDEAS <input checked="" type="checkbox"/>		Steward Observatory, University of Arizona 933 N. Cherry Avenue, Tucson, AZ 85721 (520)621-7659	
TOLERANCES UNLESS OTHERWISE SPECIFIED LINEAR .1 = ±.1 .2X = ±.04 .3XX = ± ANGULAR ± 2° DIAMETRICAL SEE SPEC S-002		DESIGNED BY: S. MATHEWS	DATE: 10/04	CATEGORY: MMT	
MATERIAL		DRAWN BY: D. DEAN	DATE: 12/0104	PROJECT: MAESTRO	
FINISH		CHECKED BY: G. LANDIS	DATE: 3/21/05	TITLE: DEWAR MOUNTING STRUT ASSEMBLIES	
ASSEMBLY APPLICATION		APPROVED BY: J. BECHTOLD	DATE: 4/22/05	PLOT SIZE SCALE: D -	
		APPROVED BY: R. WARNER	DATE: 04/22/05	DRAWING NUMBER: 14495	
		CURRENT TIME/DATE/FILE LOCATION:		REVISION: A	
		DRAWING ARCHIVE LOCATION: http://devinci.as.arizona.edu/ocod/default.html		SHEET 1 OF 1	