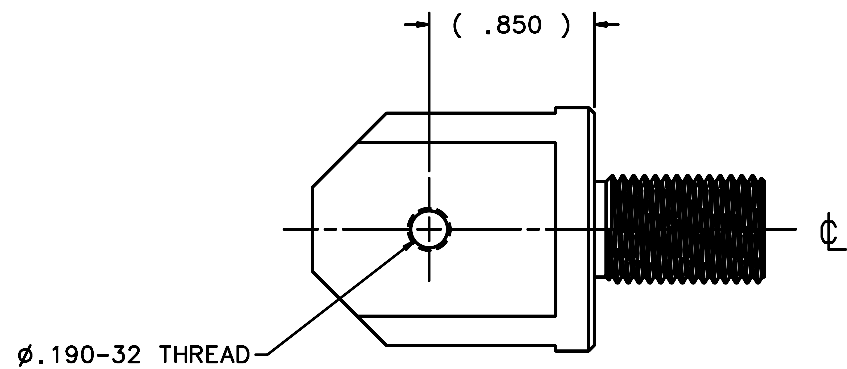
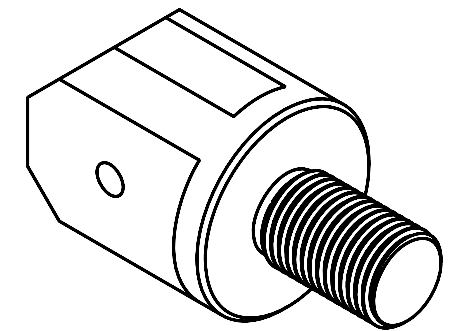
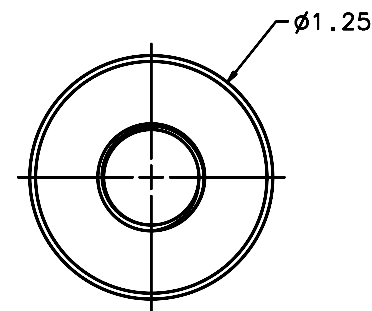
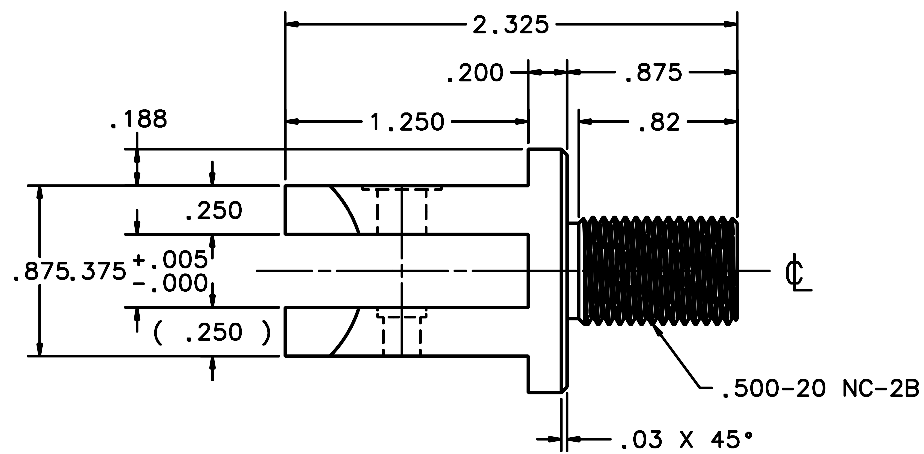
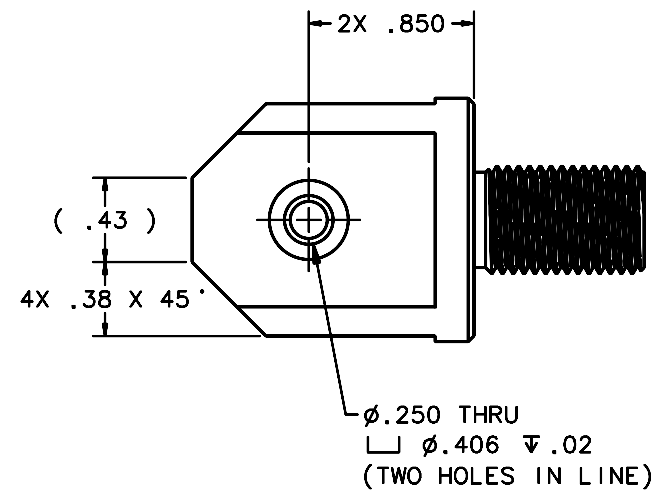


REVISIONS				
LTR	DESCRIPTION	DATE	REVISED BY	APPROVED
A	INITIAL RELEASE	04/22/05	J. BRENNAN	G. LANDIS



SCALE 2:1

10 REQUIRED

NOTES:

- BREAK SHARP EDGES & DEBUR.
- MACHINE SURFACE FINISH TO BE 125 RMS.
- ZINC CHROMATE PER ASTM-B-633-98, TYPE II, CLEAR or GOLD.
(AUTOMATION PLATING CORP., 7830 BUSINESS PARK DR., TUCSON, AZ, 520-572-9890)
- ALL DIMENSIONS ARE BEFORE ANODIZING.

DO NOT SCALE DRAWING INTERPRET DIMENSIONS AND TOLERANCES IN ACCORDANCE WITH ASME Y14.5M-94		THIS DRAWING CREATED IN: ACAD <input type="checkbox"/> MECH <input type="checkbox"/> IDEAS <input checked="" type="checkbox"/>		Steward Observatory, University of Arizona 933 N. Cherry Avenue, Tucson, AZ 85721 (520)621-7659	
TOLERANCES UNLESS OTHERWISE SPECIFIED LINEAR ANGLAR .1 = ± .02 ± 1/2° .1X = ± .02 .1XX = ± .008 DIAMETRICAL SEE SPEC S-002		DESIGNED BY: S. MATHEWS	DATE: 10/04	CATEGORY: MMT	
DIMENSIONS ARE IN INCHES / DIMENSIONS IN 1 LINE METRIC		DRAWN BY: D. DEAN	11/30/04	PROJECT: MAESTRO	
MATERIAL 10-18 STEEL		CHECKED BY: G. LANDIS	03/21/05	TITLE: DEWAR MOUNTING RH TUBE END FTG CLEVIS	
FINISH <input checked="" type="checkbox"/>		APPROVED: J. BECHTOLD	04/22/05	PLOT SIZE SCALE: D -	
NEXT ASSY USED ON		APPROVED: R. WARNER	04/22/05	DRAWING NUMBER: 14493	
ASSEMBLY APPLICATION		CURRENT TIME/DATE/FILE LOCATION:		REVISION: A	
		DRAWING ARCHIVE LOCATION: http://devinc1.as.arizona.edu/acad/default.html		SHEET OF 1	