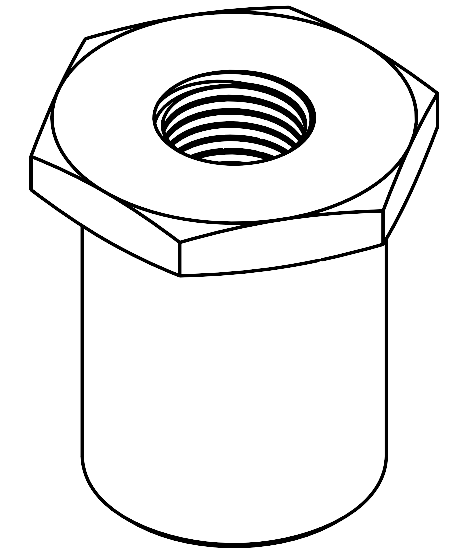
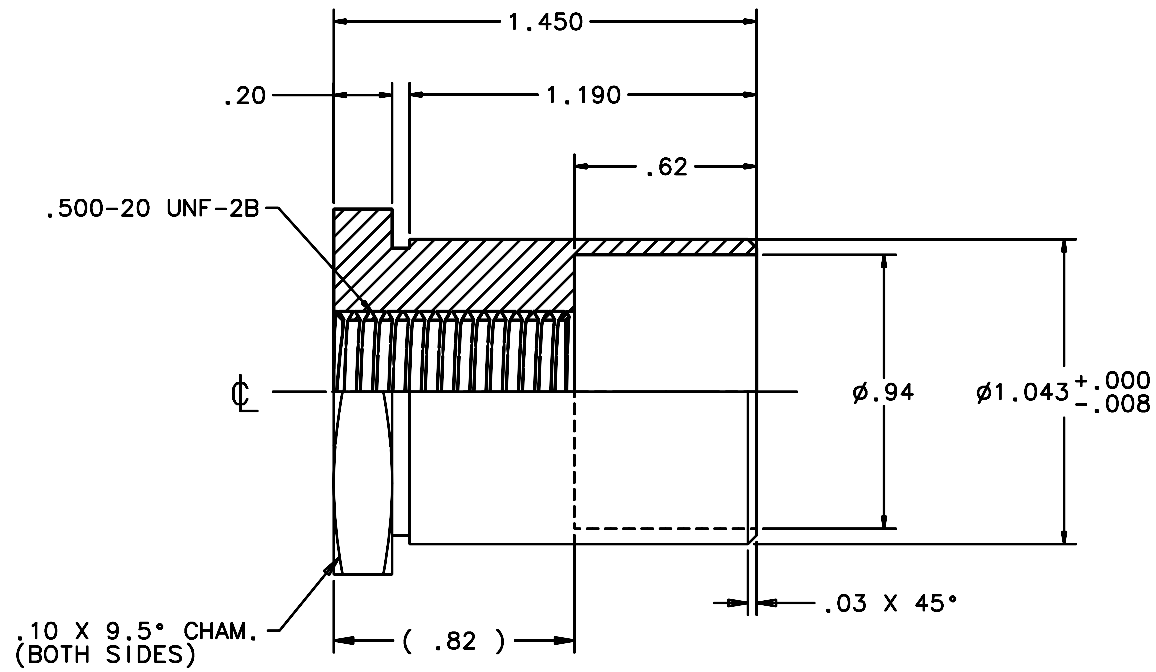
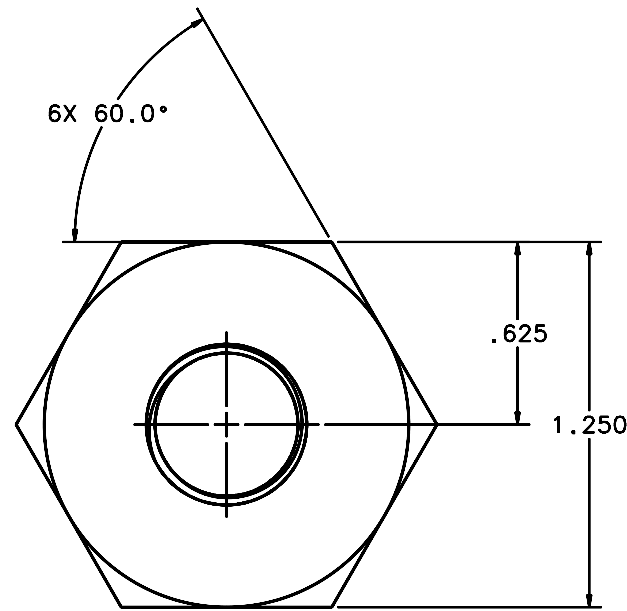


REVISIONS				
LTR	DESCRIPTION	DATE	REVISED BY	APPROVED
A	INITIAL RELEASE	04/22/05	J. BRENNAN	G. LANDIS



SCALE 3:1

10 REQUIRED

NOTES:

- BREAK SHARP EDGES & DEBUR.
- MACHINE SURFACE FINISH TO BE 125 RMS.
- ANODIZE PER MIL-A-8625, TYPE II, CLASS 2 (DYED: BLACK, GREEN, RED, ETC.).
- ALL DIMENSIONS ARE BEFORE ANODIZING.

DO NOT SCALE DRAWING INTERPRET DIMENSIONS AND TOLERANCES IN ACCORDANCE WITH ASME Y14.5M-94		THIS DRAWING CREATED IN: ACAD <input type="checkbox"/> MECH <input type="checkbox"/> IDEAS <input checked="" type="checkbox"/>		Steward Observatory, University of Arizona 933 N. Cherry Avenue, Tucson, AZ 85721 (520)621-7659			
TOLERANCES UNLESS OTHERWISE SPECIFIED LINEAR .X = ± .02 .XX = ± .008 ANGULAR ± 1/2° DIAMETRICAL SEE SPEC S-002		DESIGNED BY: S. MATHEWS		DATE: 10/04		CATEGORY: MMT	
DIMENSIONS ARE IN INCHES / DIMENSIONS IN 1.1 ARE METRIC		DRAWN BY: D. DEAN		11/30/04		PROJECT: MAESTRO	
MATERIAL 6061-T6 ALUMINUM ALLOY		CHECKED BY: G. LANDIS		03/21/05		TITLE: DEWAR MOUNTING RH TUBE END FTG	
FINISH ③		APPROVED: J. BECHTOLD		04/22/05		DRAWING NUMBER: 14492	
ASSEMBLY APPLICATION		APPROVED: R. WARNER		04/22/05		REVISION: A	
CURRENT TIME/DATE/FILE LOCATION:		PLOT SIZE SCALE: D -		DRAWING NUMBER: 14492		SHEET OF 1	
DRAWING ARCHIVE LOCATION: http://dovinci1.es.arizona.edu/ocod/default.html							