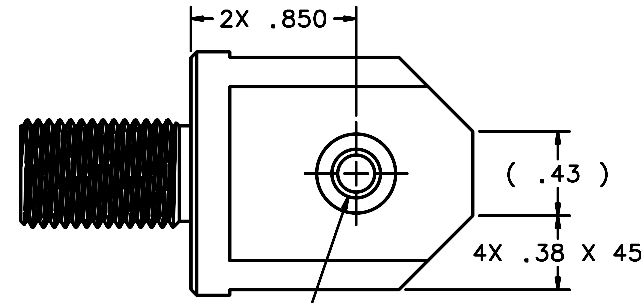
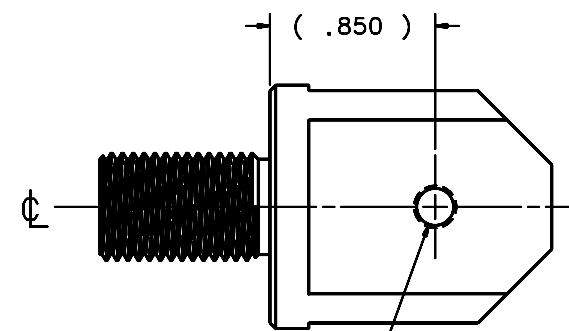
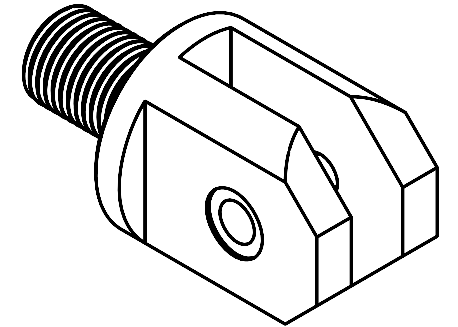
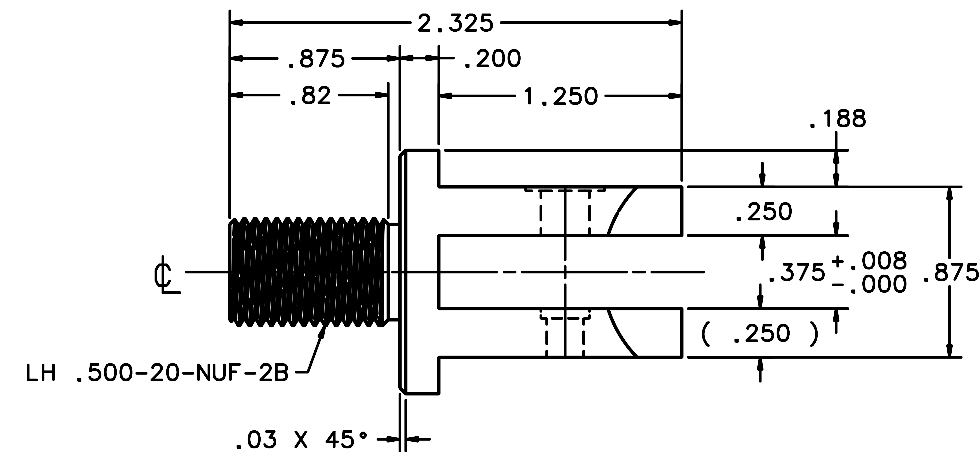
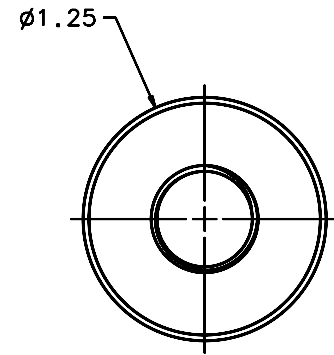


REVISIONS				
LTR	DESCRIPTION	DATE	REVISED BY	APPROVED
A	INITIAL RELEASE	04/22/05	J. BRENNAN	G. LANDIS



φ.250 THRU
 L φ.406 √.02
 (TWO HOLES IN LINE)



SCALE 2:1

10 REQUIRED

NOTES:

- BREAK SHARP EDGES & DEBURR HOLES.
- MACHINED SURFACE FINISH TO BE 63 RMS.
- ZINC CHROMATE PER ASTM-B-633-98, TYPE II, CLEAR or GOLD.
 (AUTOMATION PLATING CORP., 7830 BUSINESS PARK DR., TUCSON, AZ, 520-572-9890)
- ALL DIMENSIONS ARE BEFORE ANODIZING.

DO NOT SCALE DRAWING INTERPRET DIMENSIONS AND TOLERANCES IN ACCORDANCE WITH ASME Y14.5M-94		THIS DRAWING CREATED IN: ACAD <input type="checkbox"/> MECH <input type="checkbox"/> IDEAS <input checked="" type="checkbox"/>		Steward Observatory, University of Arizona 933 N. Cherry Avenue, Tucson, AZ 85721 (520)621-7659		
TOLERANCES UNLESS OTHERWISE SPECIFIED LINEAR ANGLAR .X = ±.02 ± 1/2° .XX = ±.008 .XXX = ±.008 DIAMETRICAL SEE SPEC S-002		DESIGNED BY: S. MATHEWS	DATE: 10/04	CATEGORY: MMT		
MATERIAL 10-18 STEEL		DRAWN BY: D. DEAN	11/30/04	PROJECT: MAESTRO		
FINISH ③		CHECKED BY: G. LANDIS	03/21/05	TITLE: DEWAR MOUNTING LH TUBE END FTG CLEVIS		
ASSEMBLY APPLICATION		APPROVED: J. BECHTOLD	04/22/05	REVISION: A		
NEXT ASSY USED ON		APPROVED: R. WARNER	04/22/05	DRAWING NUMBER: 14491		
CURRENT TIME/DATE/FILE LOCATION:		PLOT SIZE SCALE: D -		SHEET 1 OF 1		
DRAWING ARCHIVE LOCATION: http://dovinc1.as.arizona.edu/acad/default.html						