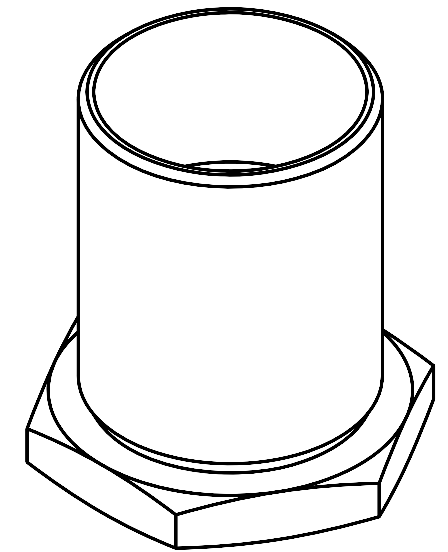
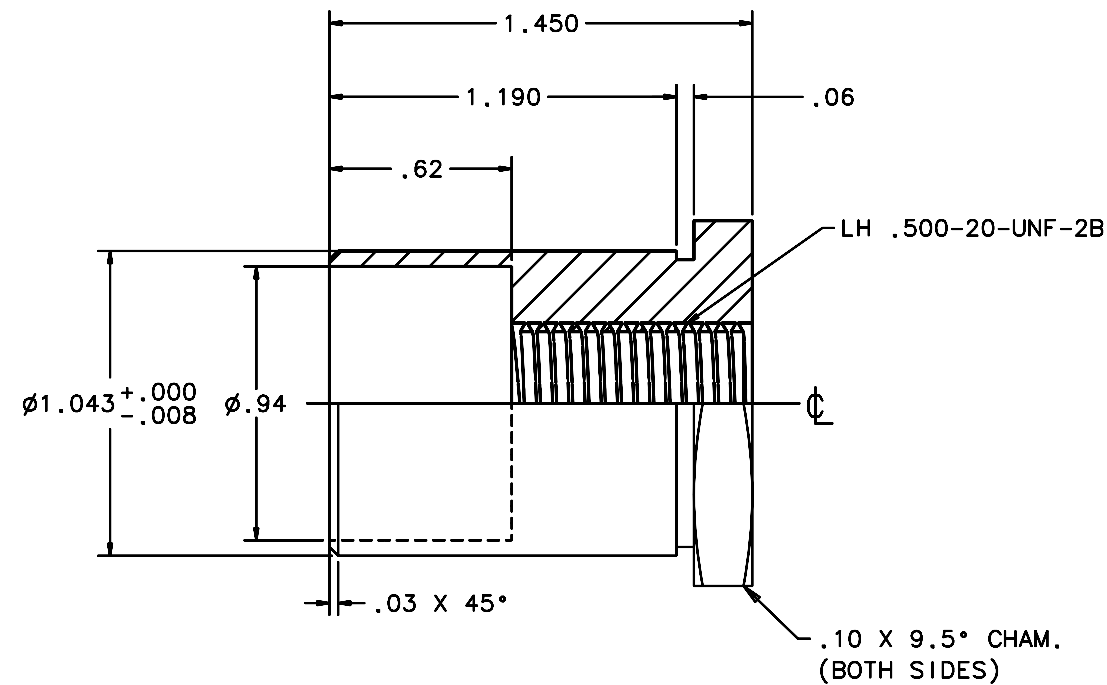
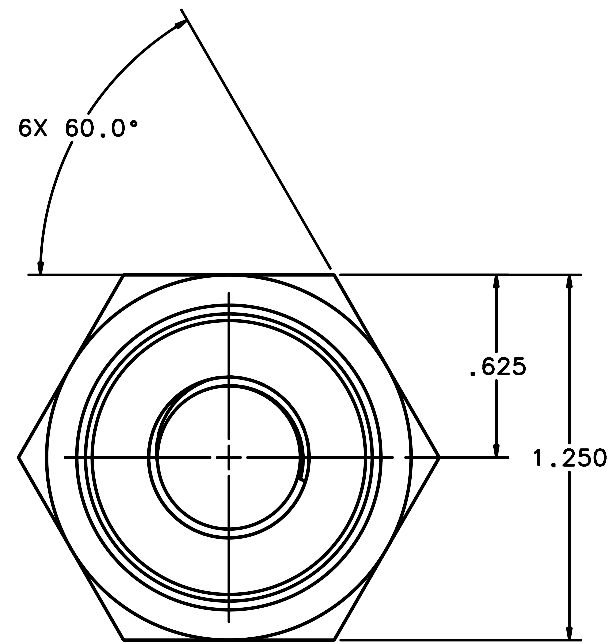


REVISIONS				
LTR	DESCRIPTION	DATE	REVISED BY	APPROVED
A	INITIAL RELEASE	04/22/05	J. BRENNAN	G. LANDIS



SCALE 3:1

10 REQUIRED

NOTES:

- BREAK SHARP EDGES & DEBUR.
- MACHINE SURFACE FINISH TO BE 125 RMS.
- ANODIZE PER MIL-A-8625, TYPE II, CLASS 2 (DYED: BLACK, GREEN, RED, ETC.).
- ALL DIMENTIONS ARE BEFORE ANODIZING.

DO NOT SCALE DRAWING INTERPRET DIMENSIONS AND TOLERANCES IN ACCORDANCE WITH ASME Y14.5M-94		THIS DRAWING CREATED IN: ACAD <input type="checkbox"/> MECH <input type="checkbox"/> IDEAS <input checked="" type="checkbox"/>		Steward Observatory, University of Arizona 933 N. Cherry Avenue, Tucson, AZ 85721 (520)621-7659		
TOLERANCES UNLESS OTHERWISE SPECIFIED LINEAR .XX = ±.02 .XXX = ±.008 ANGULAR ±1/2° DIAMETRICAL SEE SPEC S-002		DESIGNED BY: S. MATHEWS DRAWN BY: D. DEAN CHECKED BY: G. LANDIS APPROVED: J. BECHTOLD APPROVED: R. WARNER		DATE: 10/04 11/30/04 03/21/05 04/22/05 04/22/05		CATEGORY: MMT PROJECT: MAESTRO TITLE: DEWAR MOUNTING LH TUBE END FTG
MATERIAL 6061-T6 ALUMINUM ALLOY		14495 MMT-MAESTRO NEXT ASSY USED ON		PLOT SIZE SCALE: D -		DRAWING NUMBER: 14490 REVISION: A
FINISH 3		ASSEMBLY APPLICATION		CURRENT TIME/DATE/FILE LOCATION: DRAWING ARCHIVE LOCATION: http://devinci.es.arizona.edu/ocad/default.html		