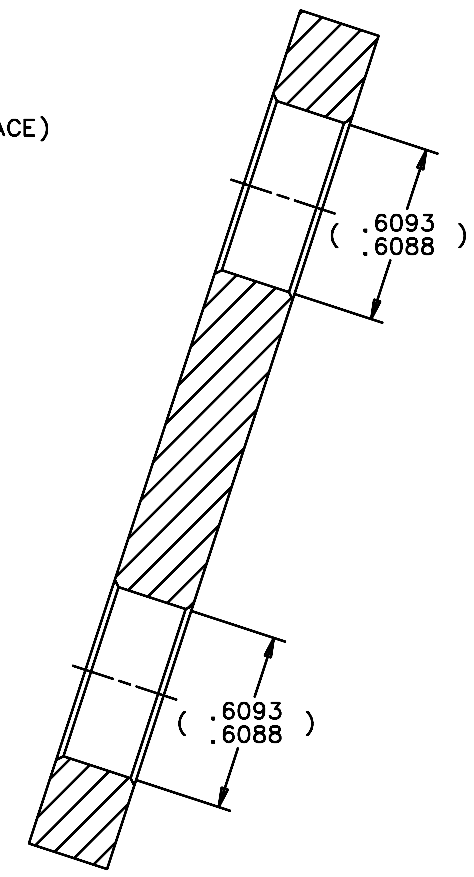
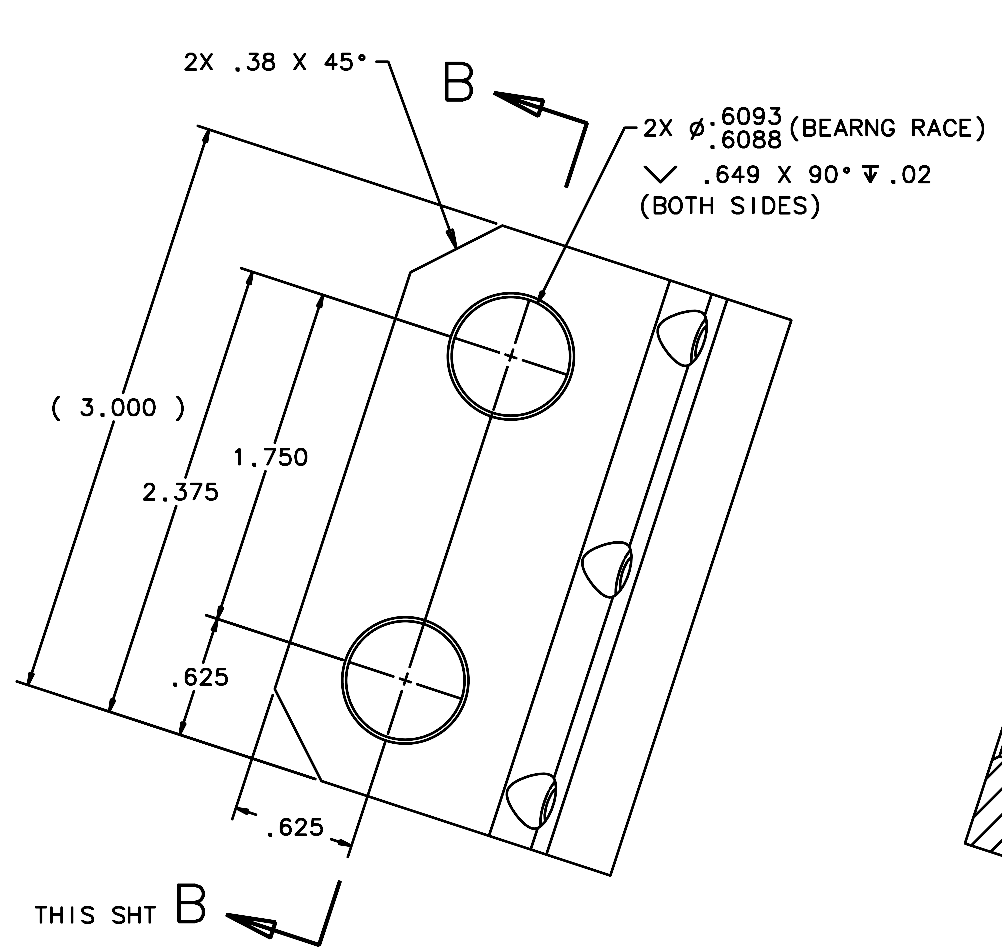
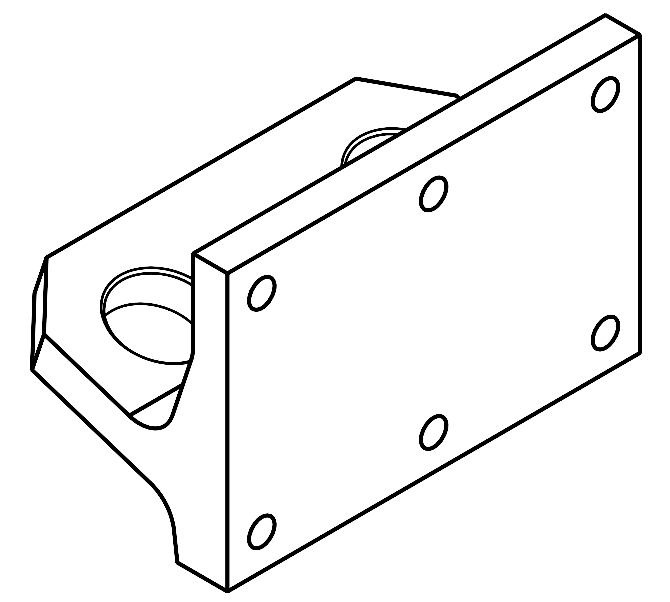
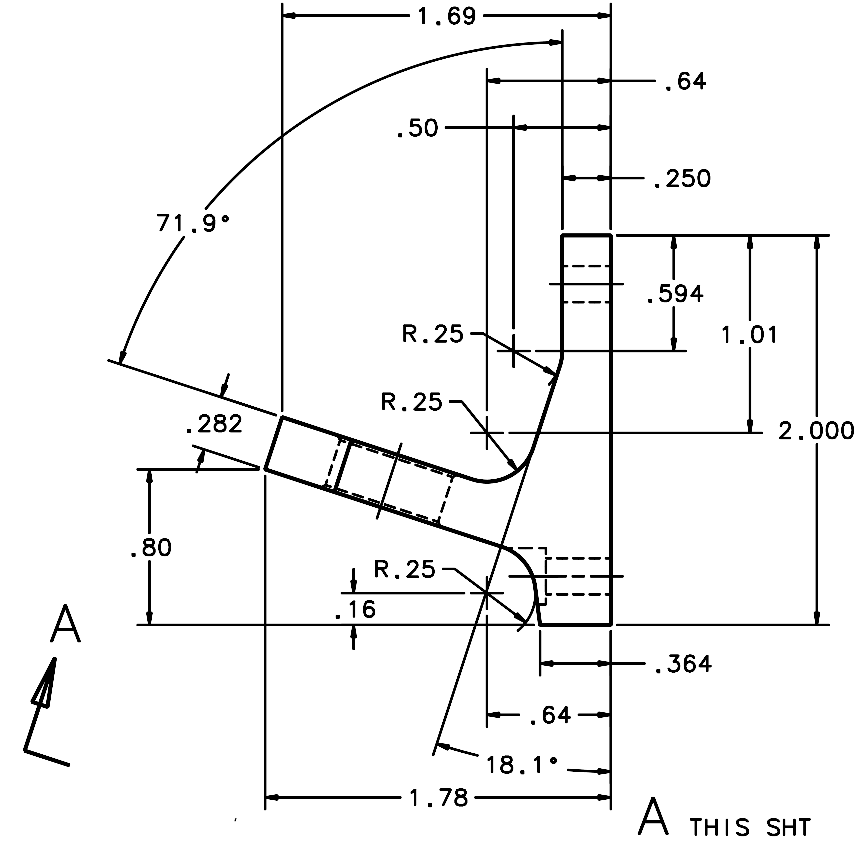
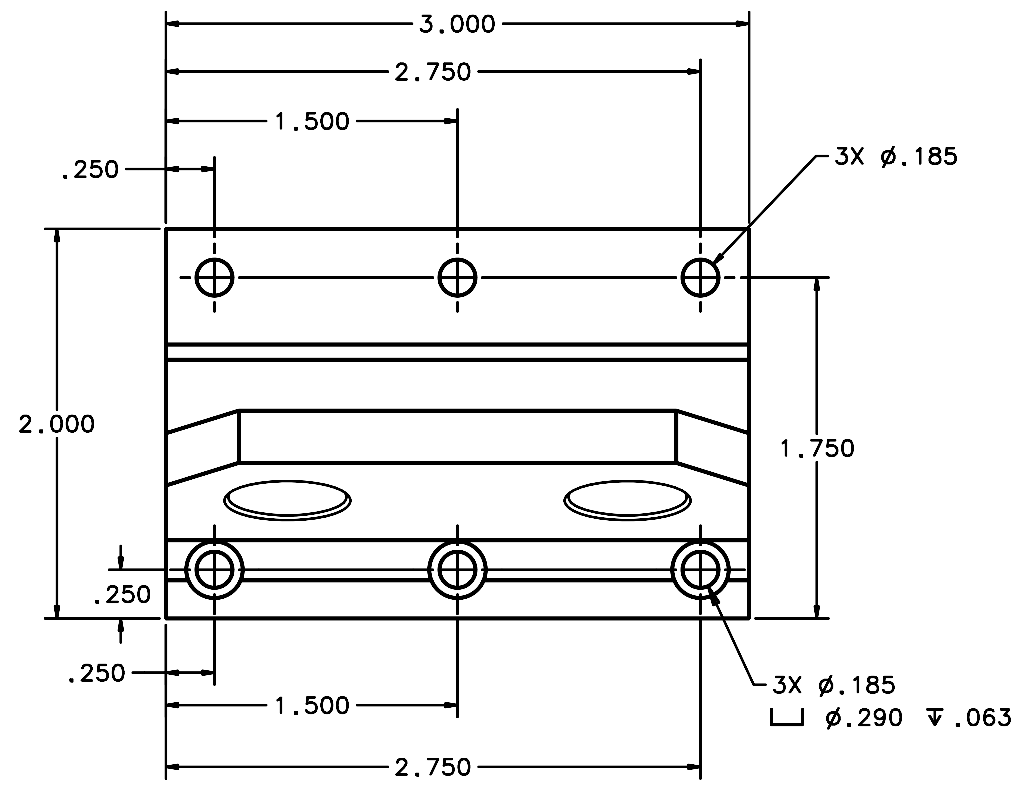


REVISIONS				
LTR	DESCRIPTION	DATE	REVISED BY	APPROVED
A	INITIAL RELEASE	04/22/05	J. BRENNAN	G. LANDIS



SCALE 2:1

2 REQUIRED NOTES:

- BREAK SHARP EDGES & DEBUR.
- MACHINE SURFACE FINISH TO BE 125 RMS.
- ANODIZE PER MIL-A-8625, TYPE II, CLASS 2 (DYED: BLACK, GREEN, RED, ETC.).
- ALL DIMENSIONS ARE BEFORE ANODIZING.

VIEW A-A
THIS SHT SCALE 2:1

VIEW B-B
THIS SHT SCALE 3:1

DO NOT SCALE DRAWING INTERPRET DIMENSIONS AND TOLERANCES IN ACCORDANCE WITH ASME Y14.5M-94	THIS DRAWING CREATED IN:			Steward Observatory, University of Arizona 933 N. Cherry Avenue, Tucson, AZ 85721 (520)621-7659			
	ACAD <input type="checkbox"/>	MECH <input type="checkbox"/>	IDEAS <input checked="" type="checkbox"/>	DESIGNED BY: S. MATHEWS	DATE: 10/04	CATEGORY: MMT	
TOLERANCES UNLESS OTHERWISE SPECIFIED LINEAR ANGLAR .X = ± .02 ± 1/2° .XX = ± .02 .XXX = ± .008 DIAMETRICAL SEE SPEC S-002				DRAWN BY: D. DEAN	11/30/04	PROJECT: MAESTRO	
				CHECKED BY: G. LANDIS	03/21/05	TITLE: DEWAR SPPT FTG UPR FWD RING BLOCK	
				APPROVED: J. BECHTOLD	04/22/05		
				APPROVED: R. WARNER	04/22/05		
MATERIAL 6061-T6 ALUMINUM ALLOY	14477	MMT-MAESTRO		APPROVED:		PLOT SIZE SCALE: D -	DRAWING NUMBER: 14489
FINISH <input checked="" type="checkbox"/>	NEXT ASSY	USED ON		APPROVED:			REVISION: A
	ASSEMBLY APPLICATION			CURRENT TIME/DATE/FILE LOCATION: DRAWING ARCHIVE LOCATION: http://dvinci.es.arizona.edu/ccod/default.html			SHEET 1 OF 1