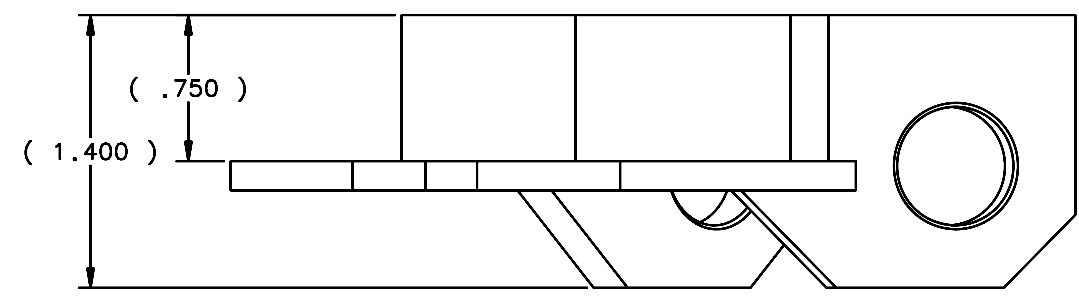
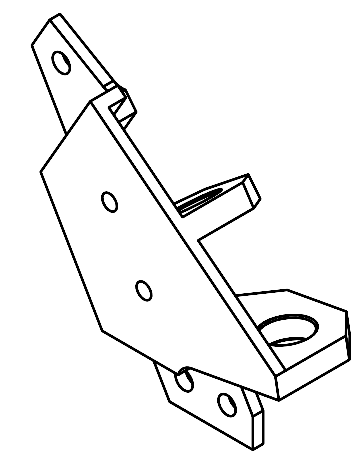
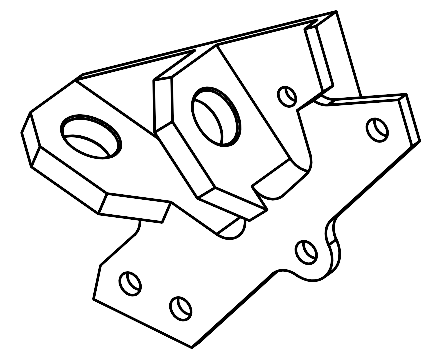
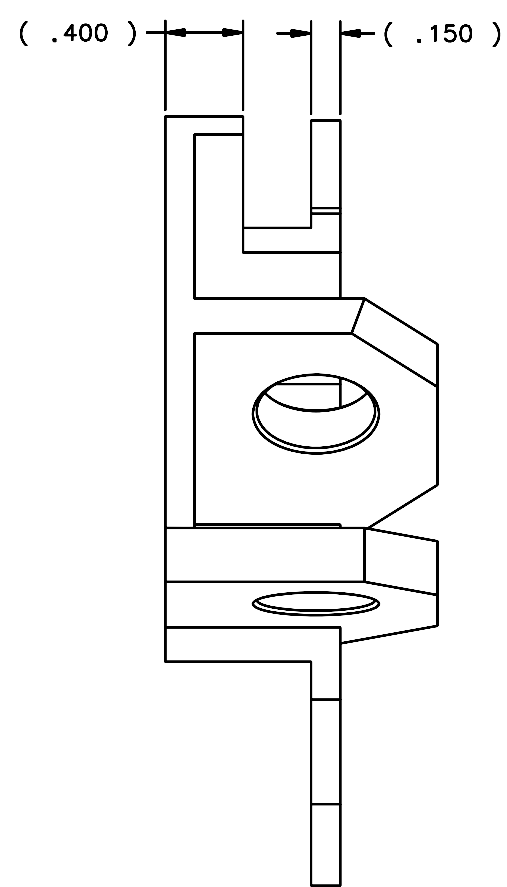
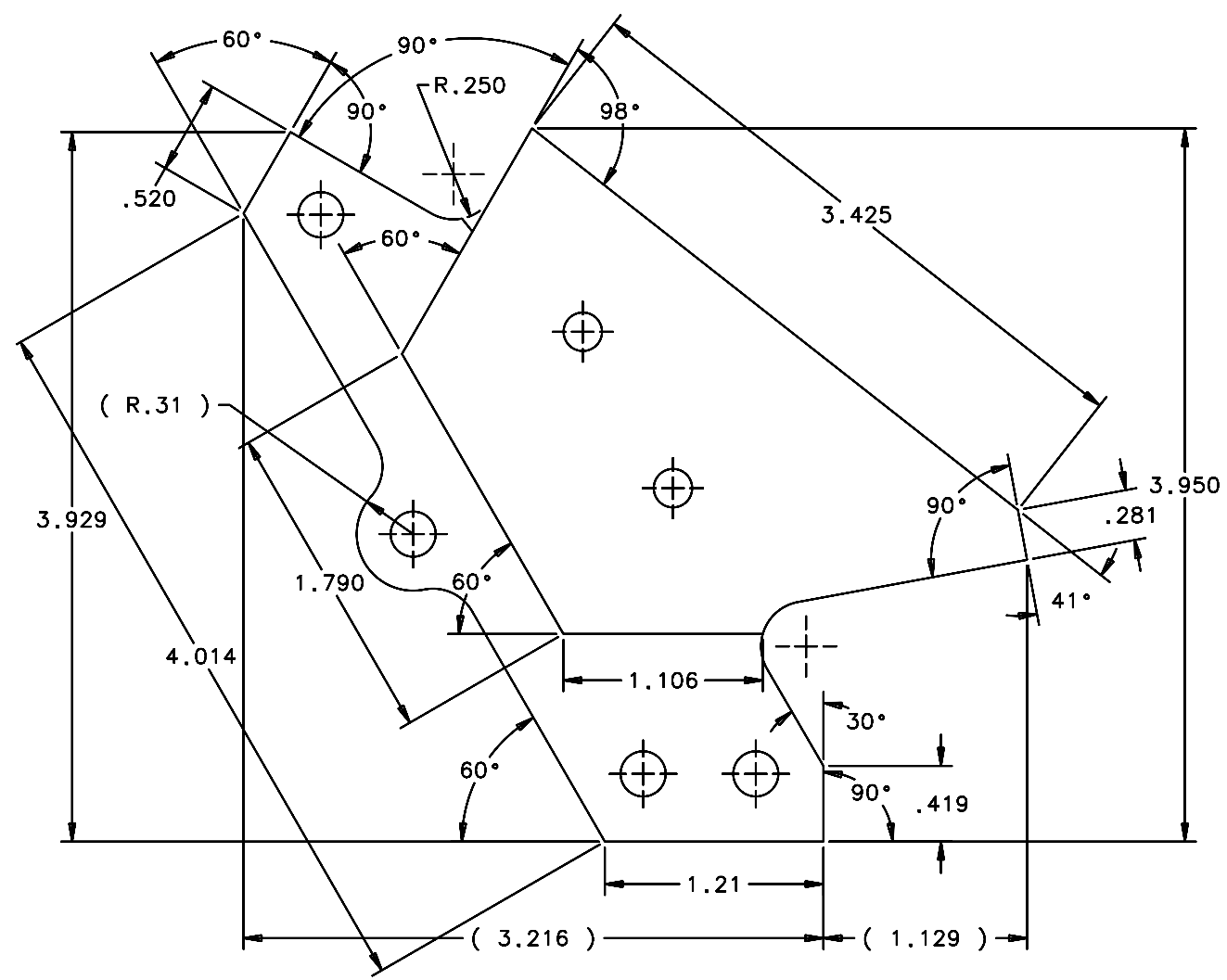
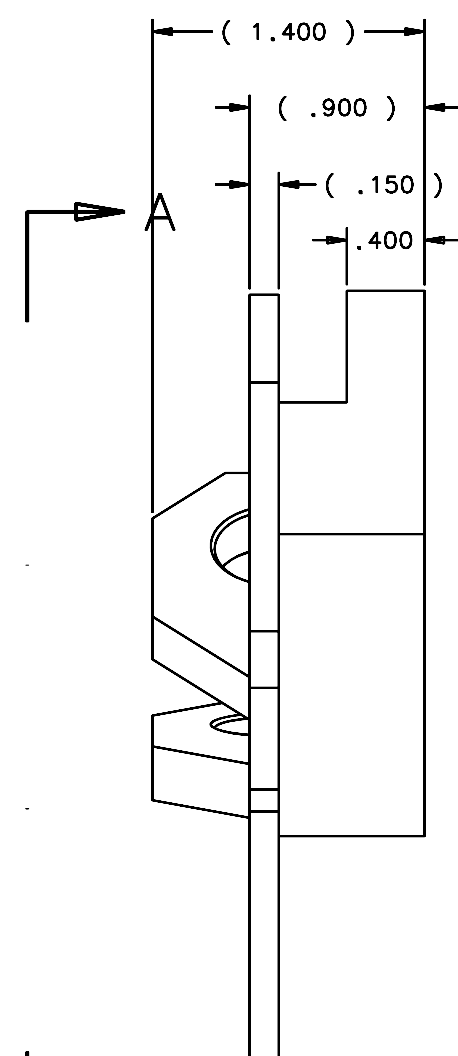
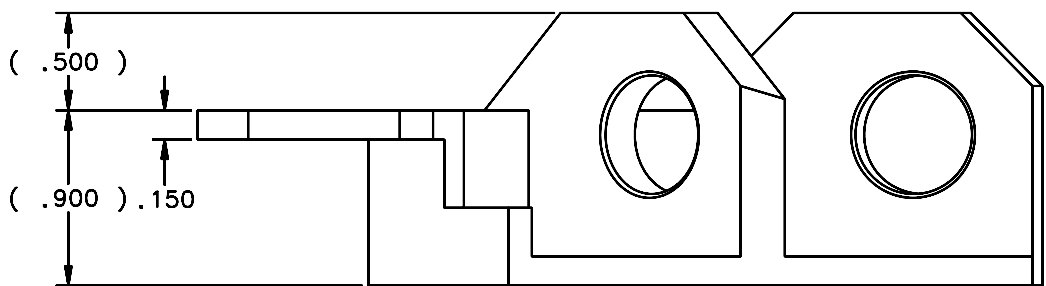


REVISIONS				
LTR	DESCRIPTION	DATE	REVISED BY	APPROVED
A	INITIAL RELEASE	04/22/05	J. BRENNAN	G. LANDIS



SCALE 2:1

2 REQUIRED

NOTES:

1. BREAK SHARP EDGES & DEBUR.
2. MACHINE SURFACE FINISH TO BE 125 RMS.
- 3 ANODIZE PER MIL-A-8625, TYPE II, CLASS 2 (DYED: BLACK, GREEN, RED, ETC.).
4. ALL DIMENSIONS ARE BEFORE ANODIZING.

DO NOT SCALE DRAWING INTERPRET DIMENSIONS AND TOLERANCES IN ACCORDANCE WITH ASME Y14.5M-94		THIS DRAWING CREATED IN: ACAD <input type="checkbox"/> MECH <input type="checkbox"/> IDEAS <input checked="" type="checkbox"/>		Steward Observatory, University of Arizona 933 N. Cherry Avenue, Tucson, AZ 85721 (520)621-7659	
TOLERANCES UNLESS OTHERWISE SPECIFIED LINEAR .X = ±.02 .XX = ±.008 DIAMETRICAL SEE SPEC 5-002		DESIGNED BY: S. MATHEWS	DATE: 10/04	CATEGORY: MMT	
		DRAWN BY: D. DEAN	1/13/05	PROJECT: MAESTRO	
		CHECKED BY: G. LANDIS	03/21/05	TITLE: DEWAR SPPT FTG UPR APEX R BLOCK	
		APPROVED: J. BECHTOLD	04/22/05		
		APPROVED: R. WARNER	04/22/05		
MATERIAL 6061-T6 ALUMINUM ALLOY	14477	MMT-MAESTRO	APPROVED:	PLOT SIZE SCALE: D -	DRAWING NUMBER: 14488
FINISH <input checked="" type="checkbox"/>	NEXT ASSY	USED ON	APPROVED:		REVISION: A
ASSEMBLY APPLICATION			CURRENT TIME/DATE/FILE LOCATION:		SHEET 1 OF 2
DRAWING ARCHIVE LOCATION: http://dovinci.as.arizona.edu/oced/default.html					