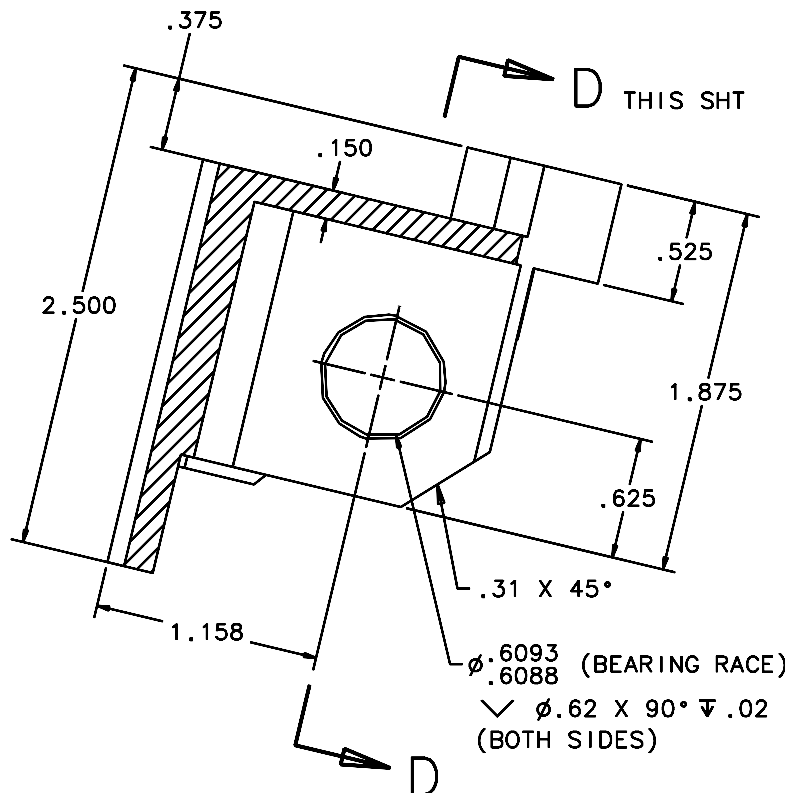
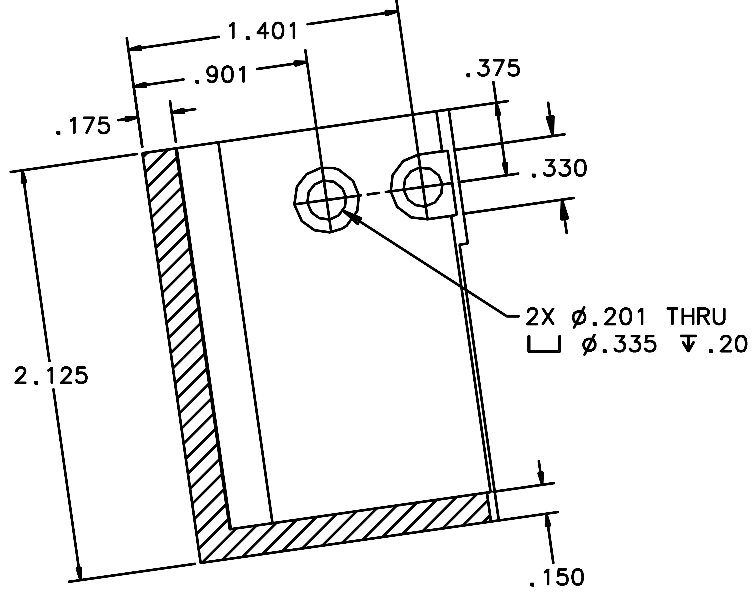


REVISIONS				
LTR	DESCRIPTION	DATE	REVISED BY	APPROVED
A	INITIAL RELEASE	04/22/05	J. BRENNAN	G. LANDIS



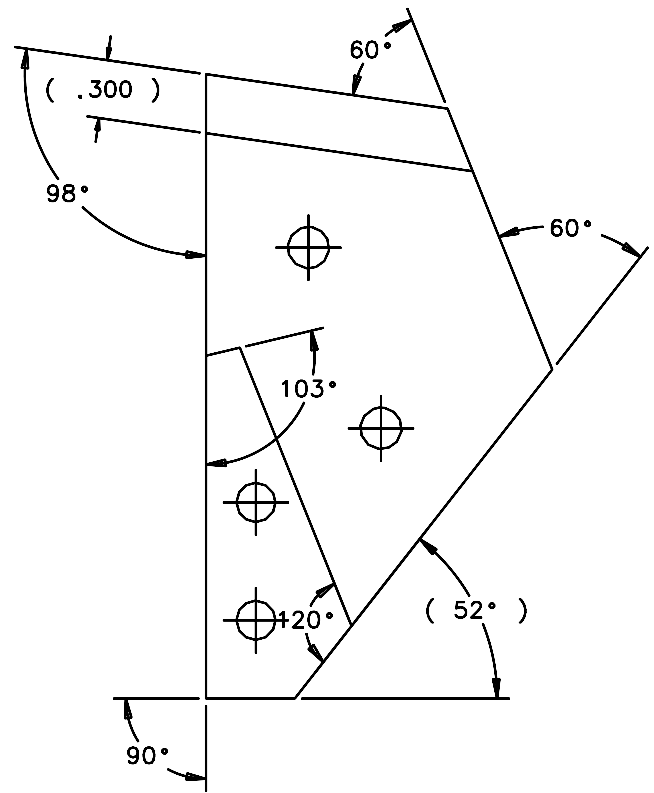
SECTION A-A

SHT 1
SCALE 2:1



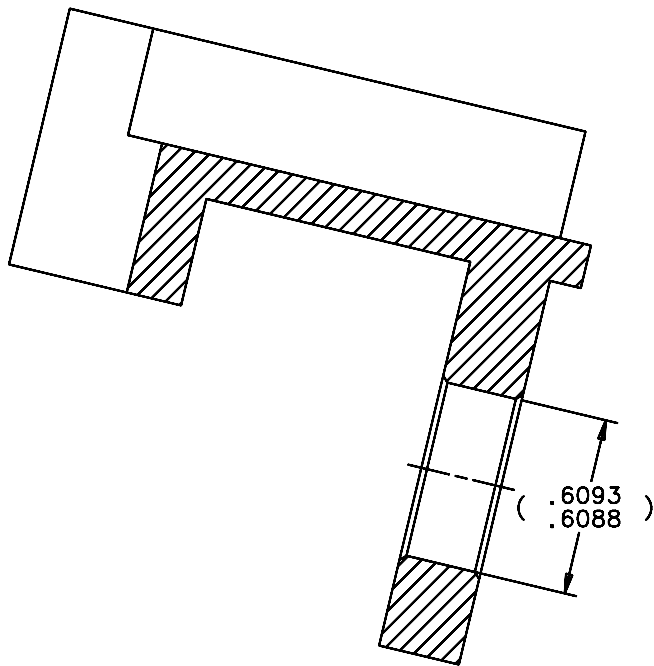
SECTION B-B

SHT 1
SCALE 2:1



VIEW C-C

SHT 1
SCALE 2:1



SECTION D-D

THIS SHIT
SCALE 3:1

DO NOT SCALE DRAWING		THIS DRAWING CREATED IN:		Steward Observatory, University of Arizona 933 N. Cherry Avenue, Tucson, AZ 85721 (520)621-7659			
INTERPRET DIMENSIONS AND TOLERANCES IN ACCORDANCE WITH ASME Y14.5M-94		ACAD	MECH	IDEAS	DESIGNED BY: S. MATHEWS	DATE: 10/04	CATEGORY: MMT
TOLERANCES UNLESS OTHERWISE SPECIFIED		<input type="checkbox"/>	<input type="checkbox"/>	<input checked="" type="checkbox"/>	DRAWN BY: D. DEAN	11/30/04	PROJECT: MAESTRO
LINEAR					CHECKED BY: G. LANDIS	03/21/05	TITLE: DEWAR
ANGULAR					APPROVED: J. BECHTOLD	04/22/05	SPPT FTG UPR APEX R
.X = ± .02					APPROVED: R. WARNER	04/22/05	BLOCK
.XX = ± .008							
.XXX = ± .008							
DIAMETRICAL SEE SPEC S-002							
MATERIAL		14477	MMT-MAESTRO				
6061-T6 ALUMINUM ALLOY		NEXT ASSY	USED ON				
FINISH		ASSEMBLY APPLICATION		CURRENT TIME/DATE/FILE LOCATION:		DRAWING NUMBER:	
3				DRAWING ARCHIVE LOCATION: http://devinci.as.arizona.edu/ocod/default.html		14487	
							REVISION: A
SHEET 2 OF 2							