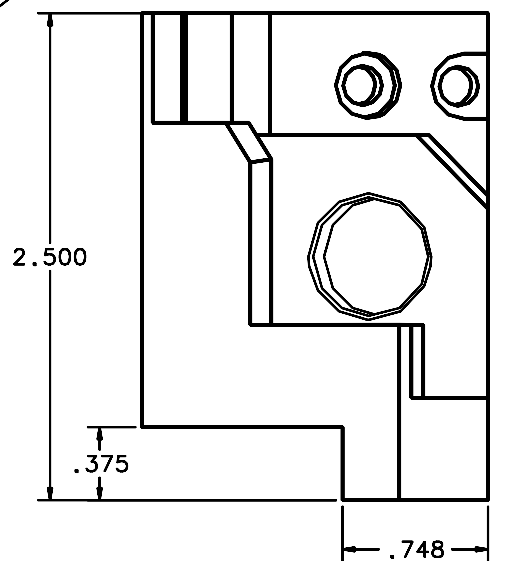
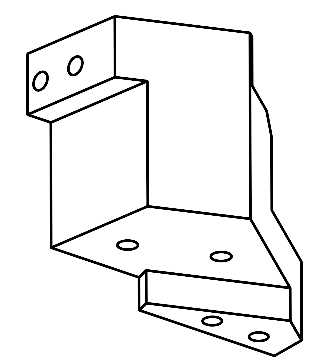
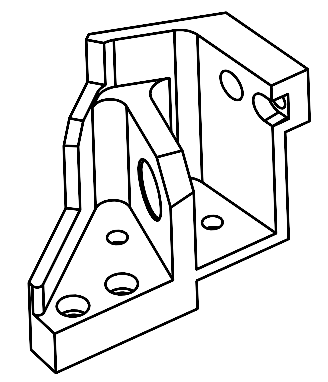
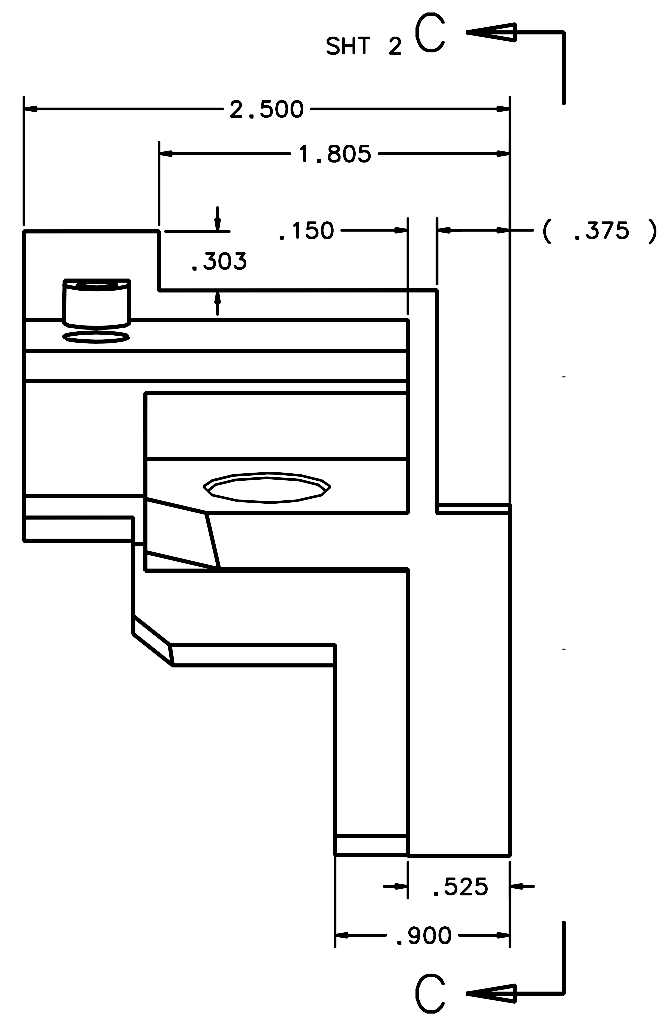
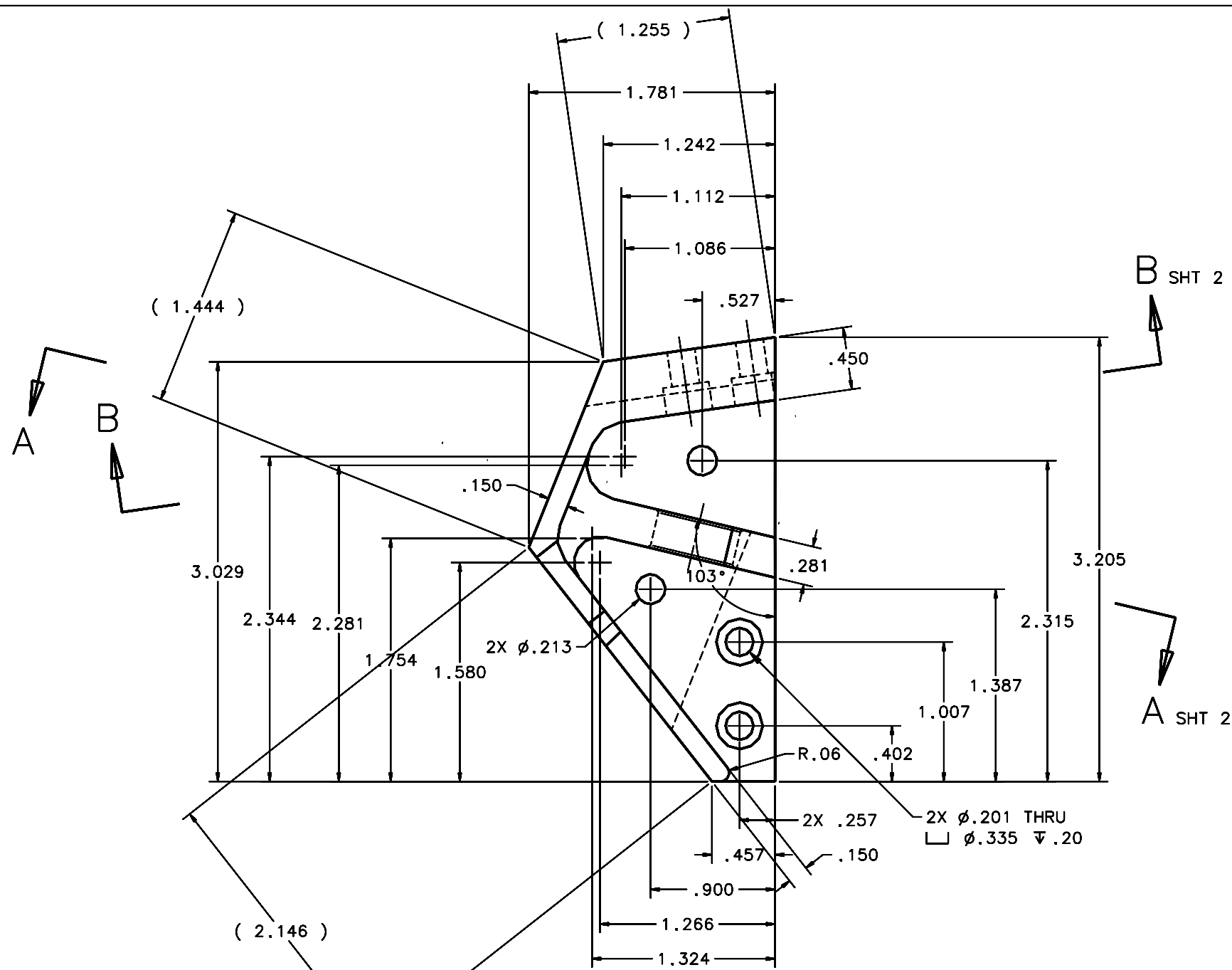


REVISIONS				
LTR	DESCRIPTION	DATE	REVISED BY	APPROVED
A	INITIAL RELEASE	04/22/05	J. BRENNAN	G. LANDIS



SCALE 2:1

- 1 REQUIRED
- NOTES:
- BREAK SHARP EDGES & DEBUR.
  - MACHINE SURFACE FINISH TO BE 125 RMS.
  - ANODIZE PER MIL-A-8625, TYPE II, CLASS 2 (DYED: BLACK, GREEN, RED, ETC.).
  - ALL DIMENSIONS ARE BEFORE ANODIZING.

DO NOT SCALE DRAWING		THIS DRAWING CREATED IN:		Steward Observatory, University of Arizona 933 N. Cherry Avenue, Tucson, AZ 85721 (520)621-7659			
INTERPRET DIMENSIONS AND TOLERANCES IN ACCORDANCE WITH ASME Y14.5M-94		ACAD	MECH	IDEAS	DESIGNED BY: S. MATHEWS	DATE: 10/04	CATEGORY: MMT
TOLERANCES UNLESS OTHERWISE SPECIFIED		<input type="checkbox"/>	<input type="checkbox"/>	<input checked="" type="checkbox"/>	DRAWN BY: D. DEAN	11/30/04	PROJECT: MAESTRO
LINEAR					CHECKED BY: G. LANDIS	03/21/05	TITLE: DEWAR
ANGULAR					APPROVED: J. BECHTOLD	04/22/05	SPPT FTG UPR APEX R
.X = ±					APPROVED: R. WARNER	04/22/05	BLOCK
.XX = ±.02							
.XXX = ±.008							
DIAMETRICAL SEE SPEC S-002							
MATERIAL		14477	MMT-MAESTRO				
6061-T6 ALUMINUM ALLOY		NEXT ASSY	USED ON				
FINISH 3		ASSEMBLY APPLICATION		CURRENT TIME/DATE/FILE LOCATION:		PLOT SIZE SCALE:	DRAWING NUMBER:
				DRAWING ARCHIVE LOCATION: <a href="http://dovinci.os.arizona.edu/ocod/default.html">http://dovinci.os.arizona.edu/ocod/default.html</a>		D -	14487
							REVISION: A
							SHEET 1 OF 2