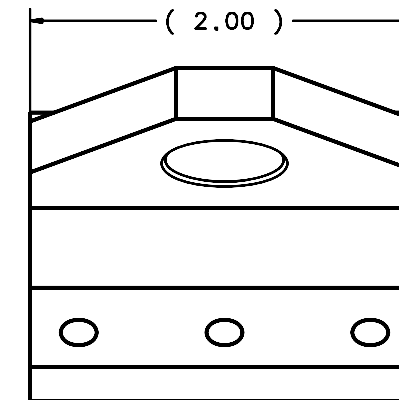
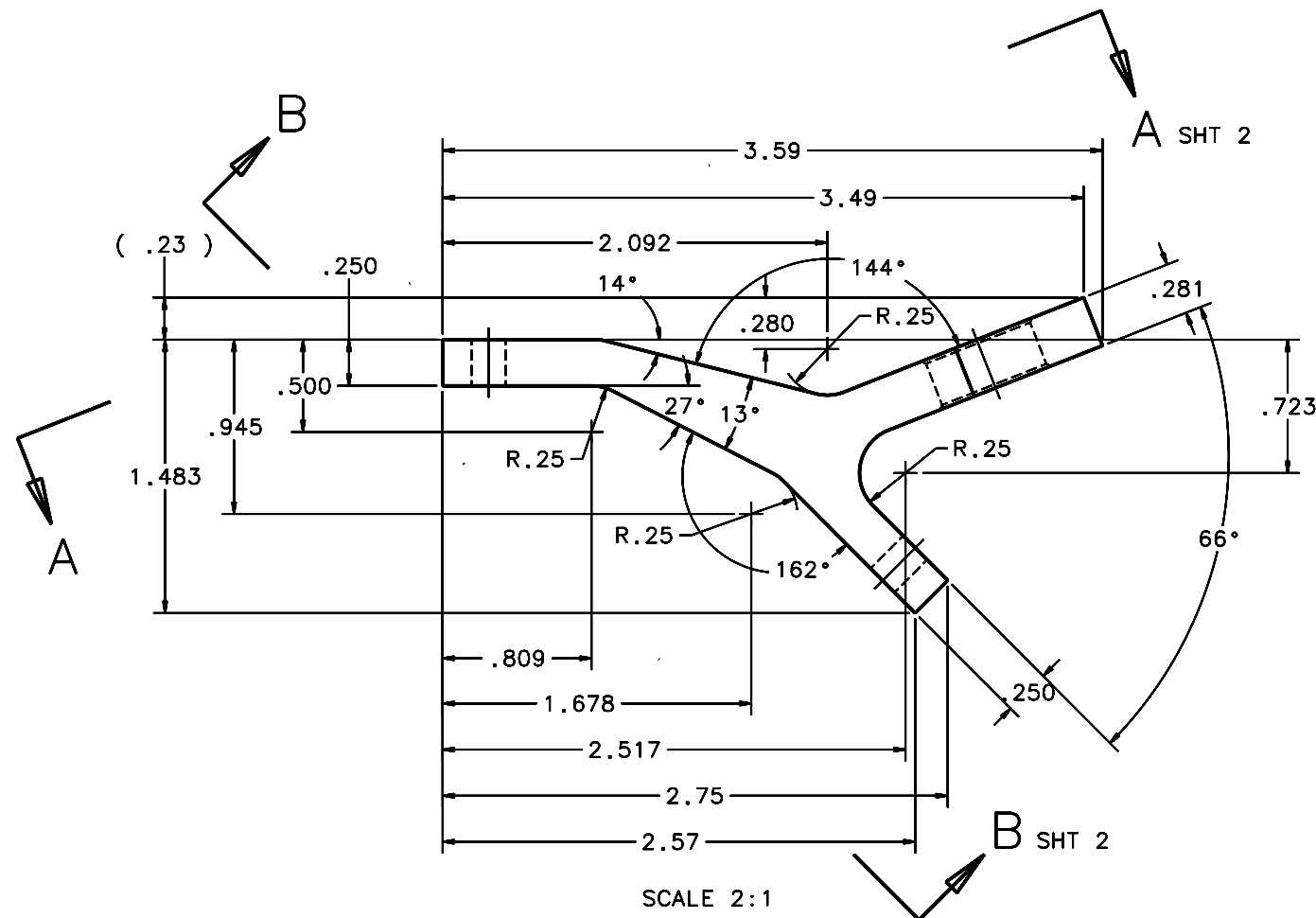
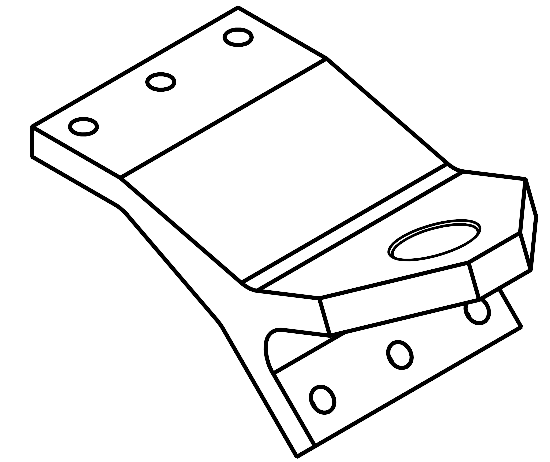
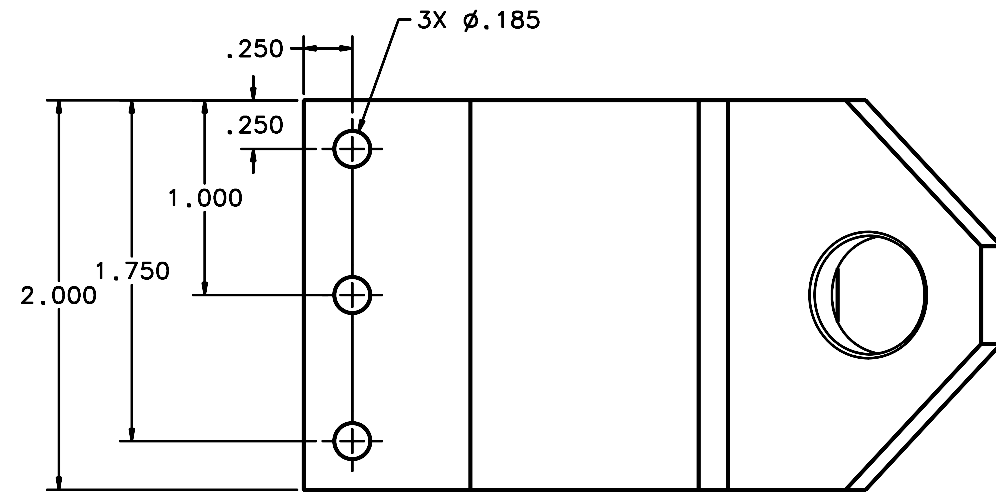


REVISIONS				
LTR	DESCRIPTION	DATE	REVISED BY	APPROVED
A	INITIAL RELEASE	04/22/05	J. BRENNAN	G. LANDIS



2 REQUIRED

NOTES:

- BREAK SHARP EDGES & DEBUR.
- MACHINE SURFACE FINISH TO BE 125 RMS.
- ANODIZE PER MIL-A-8625, TYPE II, CLASS 2 (DYED: BLACK, GREEN, RED, ETC.).
- ALL DIMENSIONS ARE BEFORE ANODIZING.

DO NOT SCALE DRAWING INTERPRET DIMENSIONS AND TOLERANCES IN ACCORDANCE WITH ASME Y14.5M-94		THIS DRAWING CREATED IN: ACAD <input type="checkbox"/> MECH <input type="checkbox"/> IDEAS <input checked="" type="checkbox"/>		Steward Observatory, University of Arizona 933 N. Cherry Avenue, Tucson, AZ 85721 (520)621-7659	
TOLERANCES UNLESS OTHERWISE SPECIFIED LINEAR .X = ± .02 .XX = ± .02 .XXX = ± .008 ANGULAR ± 1/2° DIAMETRICAL SEE SPEC S-002		DESIGNED BY: S. MATHEWS	DATE: 10/04	CATEGORY: MMT	
DIMENSIONS ARE IN INCHES / DIMENSIONS IN [ ] ARE METRIC		DRAWN BY: D. DEAN	11/30/04	PROJECT: MAESTRO	
MATERIAL 6061-6T ALUMINUM ALLOY		CHECKED BY: G. LANDIS	03/21/05	TITLE: DEWAR SPPT FTG UPR AFT BLOCK	
FINISH <input checked="" type="checkbox"/>		APPROVED: J. BECHTOLD	04/22/05	PLOT SIZE SCALE: D -	
NEXT ASSY USED ON		APPROVED: R. WARNER	04/22/05	DRAWING NUMBER: 14485	
ASSEMBLY APPLICATION		CURRENT TIME/DATE/FILE LOCATION: DRAWING ARCHIVE LOCATION: <a href="http://dovinci.es.arizona.edu/ccod/default.html">http://dovinci.es.arizona.edu/ccod/default.html</a>		REVISION: A	