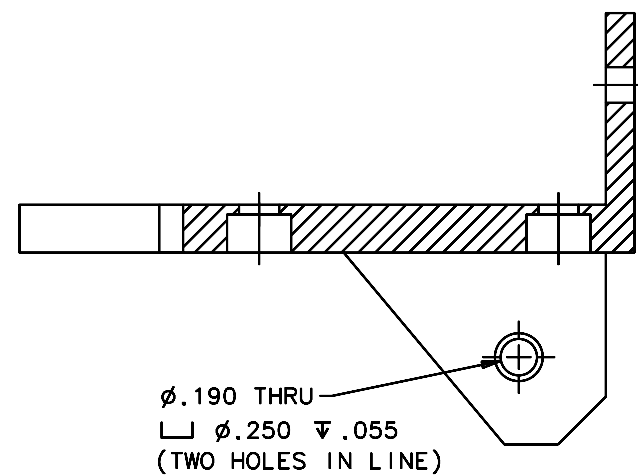
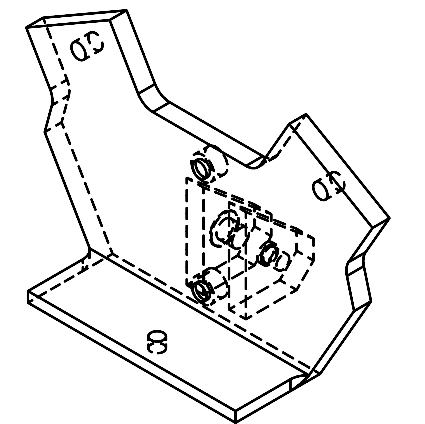
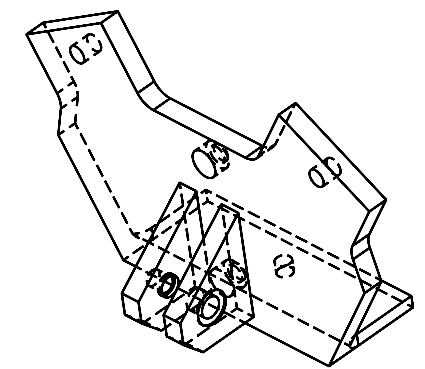
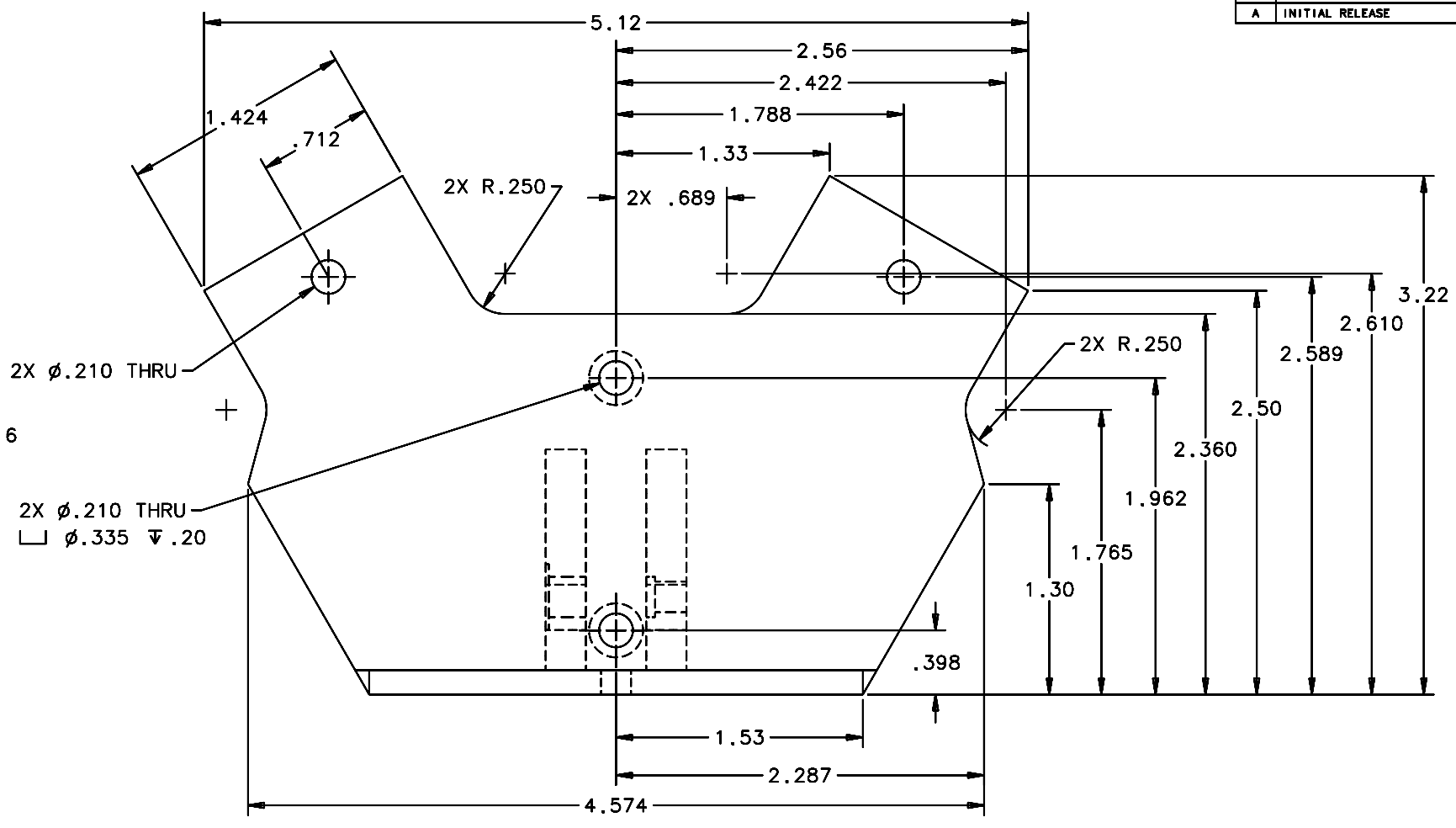
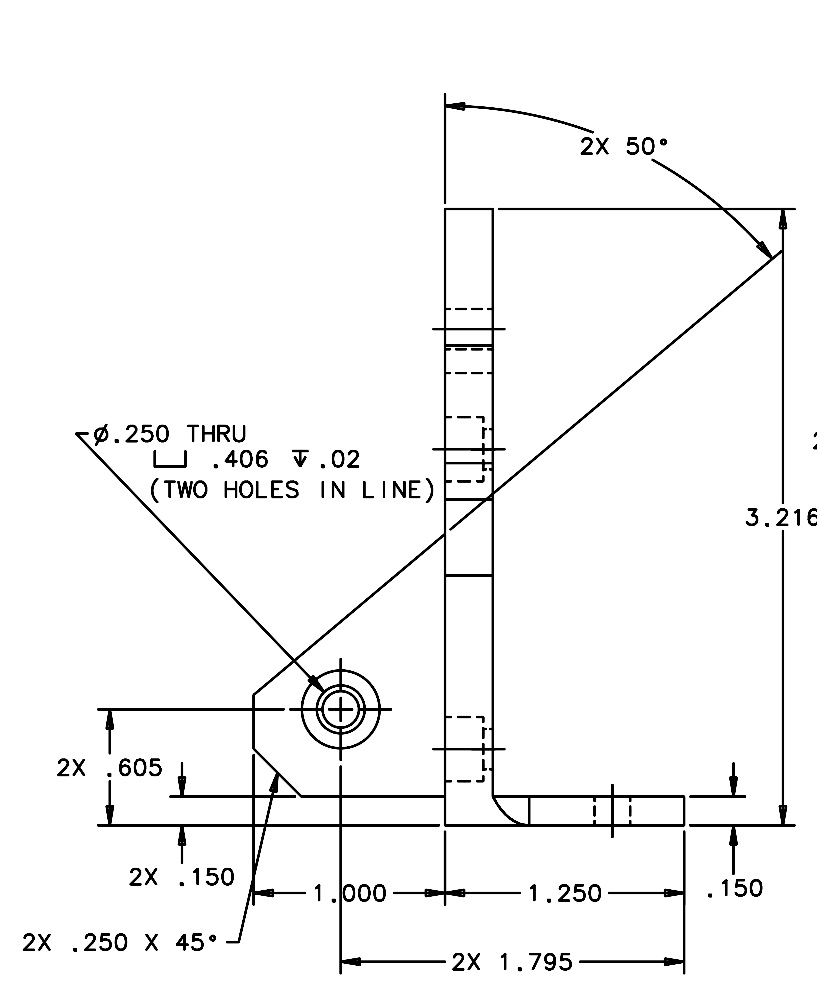
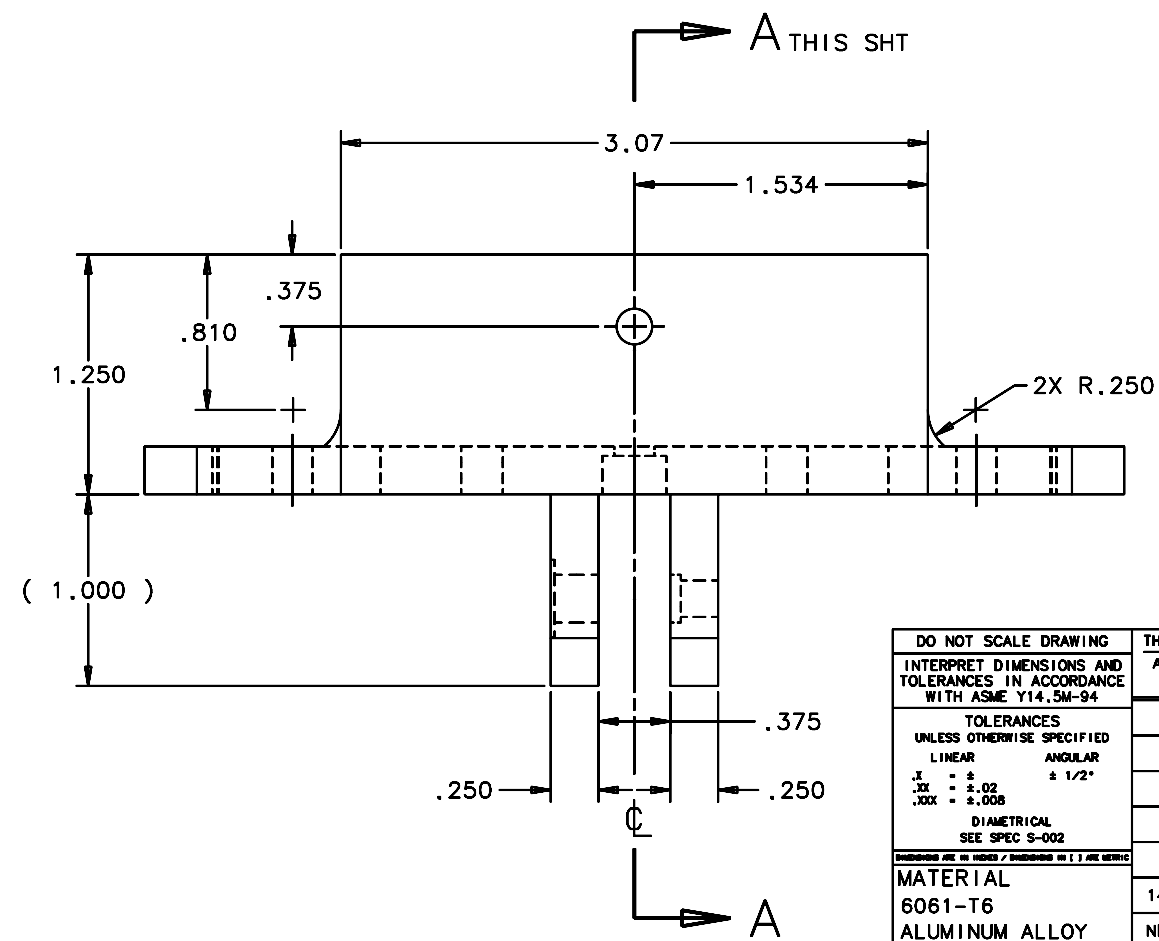


REVISIONS				
LTR	DESCRIPTION	DATE	REVISED BY	APPROVED
A	INITIAL RELEASE	04/22/05	J. BRENNAN	G. LANDIS



SECTION A-A

THIS THT
SCALE 2:1



1 REQUIRED

NOTES:

- BREAK SHARP EDGES & DEBUR.
- MACHINE SURFACE FINISH TO BE 125 RMS.
- ANODIZE PER MIL-A-8625, TYPE II, CLASS 2 (DYED: BLACK, GREEN, RED, ETC.).
- ALL DIMENSIONS ARE BEFORE ANODIZING.

DO NOT SCALE DRAWING	THIS DRAWING CREATED IN:			Steward Observatory, University of Arizona		
INTERPRET DIMENSIONS AND TOLERANCES IN ACCORDANCE WITH ASME Y14.5M-94	ACAD	MECH	IDEAS	933 N. Cherry Avenue, Tucson, AZ 85721 (520)621-7659		
TOLERANCES UNLESS OTHERWISE SPECIFIED	<input type="checkbox"/>	<input type="checkbox"/>	<input checked="" type="checkbox"/>	DESIGNED BY:	DATE:	CATEGORY:
LINEAR				S. MATHEWS	10/04	MMT
ANGULAR				DRAWN BY:	11/30/04	PROJECT:
.1 - ±				D. DEAN		MAESTRO
.XX - ±.02				CHECKED BY:	03/21/05	TITLE:
.XXX - ±.008				G. LANDIS		DEWAR
DIAMETRICAL				APPROVED:	04/22/05	SPPT FRT LWR CTR APEX
SEE SPEC S-002				J. BECHTOLD		BLOCK
FINISH <input checked="" type="checkbox"/>				APPROVED:	04/22/05	
				R. WARNER		
MATERIAL	14477	MMT-MAESTRO		APPROVED:		PLOT SIZE SCALE:
6061-T6		USED ON				D -
ALUMINUM ALLOY						DRAWING NUMBER:
						14480
						REVISION:
						A
ASSEMBLY APPLICATION	CURRENT TIME/DATE/FILE LOCATION:			DRAWING ARCHIVE LOCATION: http://devinc1.os.arizona.edu/ocod/default.html		
				SHEET 1 OF 1		