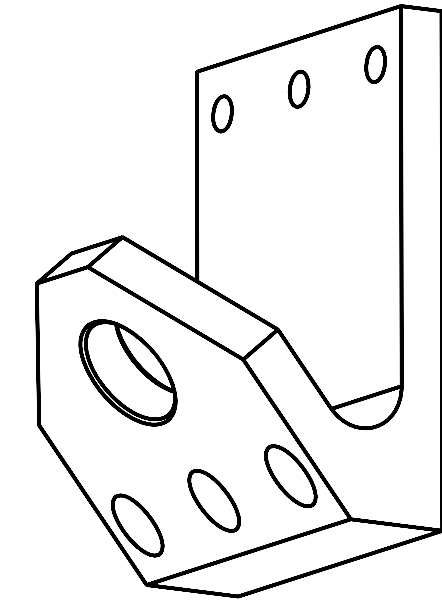
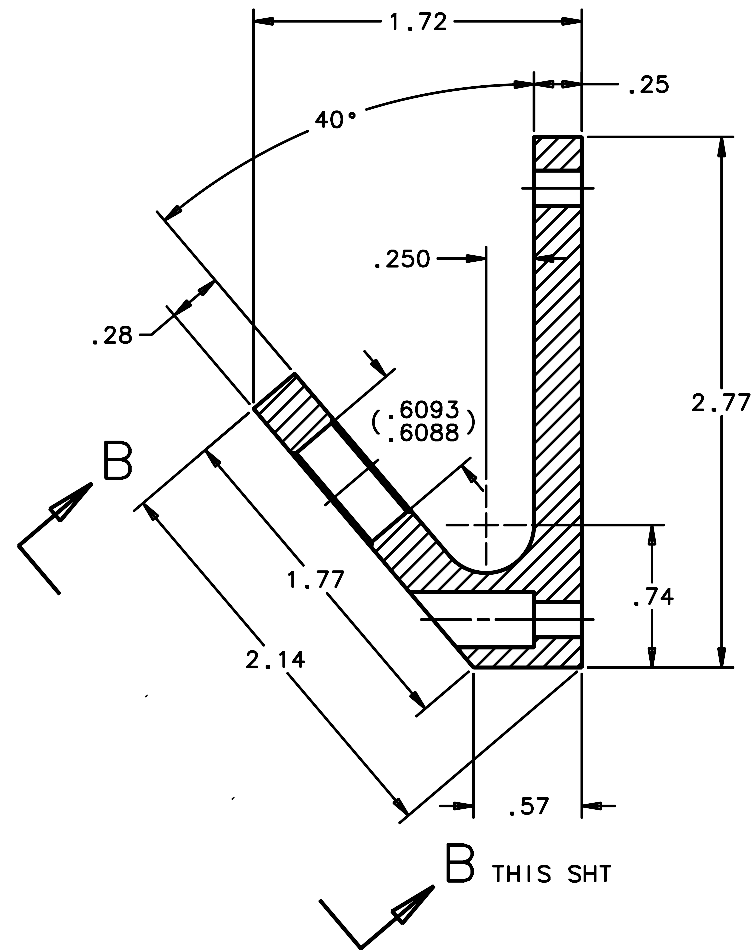
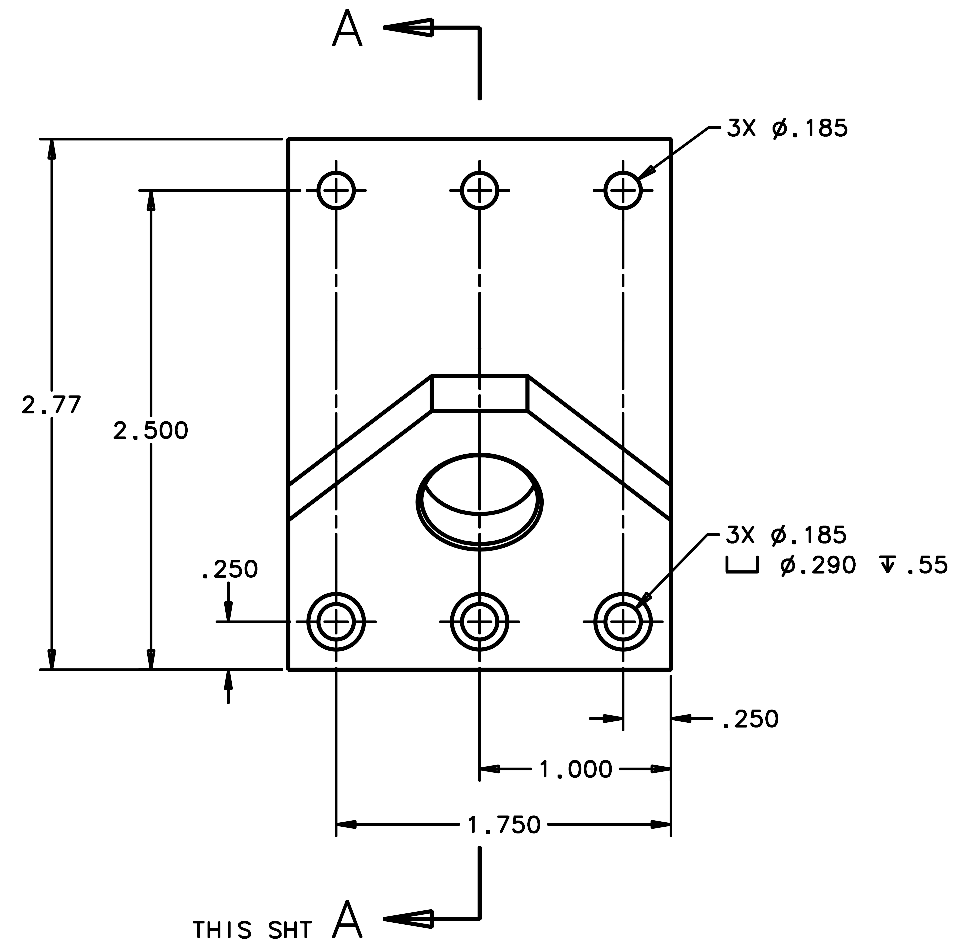
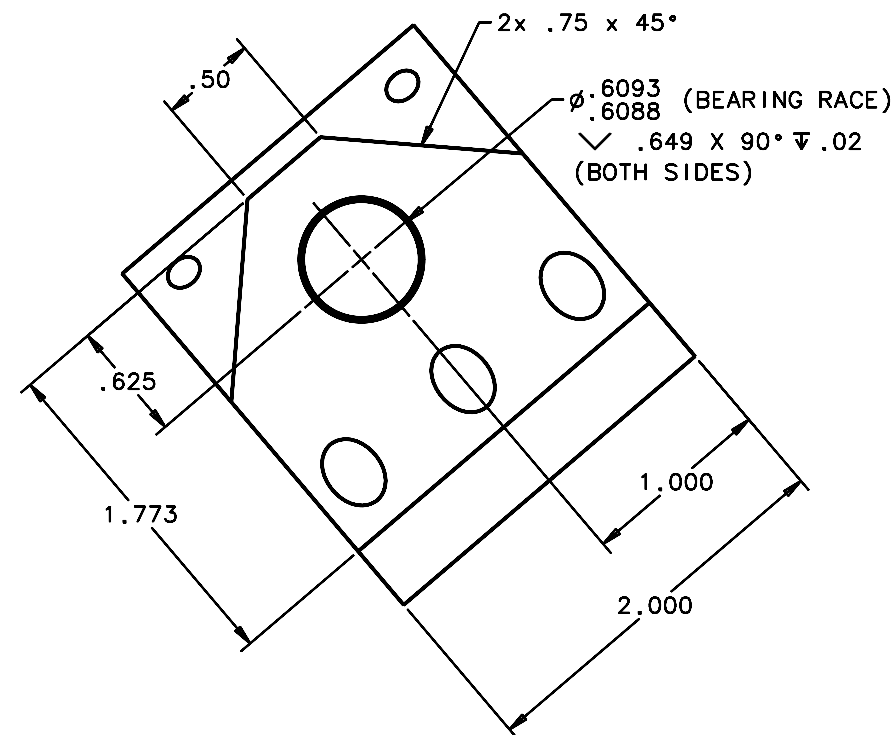


REVISIONS				
LTR	DESCRIPTION	DATE	REVISED BY	APPROVED
A	INITIAL RELEASE	04/22/05	J. BRENNAN	G. LANDIS



SECTION A-A

THIS SHT
 SCALE 2:1



VIEW B-B

THIS SHT
 SCALE 2:1

2 REQUIRED

NOTES:

- BREAK SHARP EDGES & DEBUR.
- MACHINE SURFACE FINISH TO BE 125 RMS.
- ANODIZE PER MIL-A-8625, TYPE II, CLASS 2 (DYED: BLACK, GREEN, RED, ETC.).
- ALL DIMENSIONS ARE BEFORE ANODIZING.

DO NOT SCALE DRAWING	THIS DRAWING CREATED IN:			Steward Observatory, University of Arizona			
INTERPRET DIMENSIONS AND TOLERANCES IN ACCORDANCE WITH ASME Y14.5M-94	ACAD	MECH	IDEAS	933 N. Cherry Avenue, Tucson, AZ 85721 (520)621-7659			
TOLERANCES UNLESS OTHERWISE SPECIFIED	<input type="checkbox"/>	<input type="checkbox"/>	<input checked="" type="checkbox"/>	DESIGNED BY:	DATE:	CATEGORY:	
LINEAR				S. MATHEWS	10/04	MMT	
ANGULAR				DRAWN BY:	11/30/04	PROJECT:	MAESTRO
.1 - ±				D. DEAN		TITLE:	DEWAR
.XX - ±.02				CHECKED BY:	03/21/05	SPPT FRT LWR AFT	BLOCK
.XXX - ±.008				G. LANDIS			
DIAMETRICAL				APPROVED:	04/22/05		
SEE SPEC S-002				J. BECHTOLD			
DRAWINGS ARE IN UNITS / DIMENSIONS IN 1/16 IN UNITS				APPROVED:	04/22/05		
				R. WARNER			
MATERIAL	14477	MMT-MAESTRO	APPROVED:			PLOT SIZE SCALE:	DRAWING NUMBER:
6061-T6						D -	14479
ALUMINUM ALLOY	NEXT ASSY	USED ON	APPROVED:				REVISION:
FINISH ③							A
	ASSEMBLY APPLICATION						
				CURRENT TIME/DATE/FILE LOCATION:			
				DRAWING ARCHIVE LOCATION: http://devinci.as.arizona.edu/ocad/default.html			