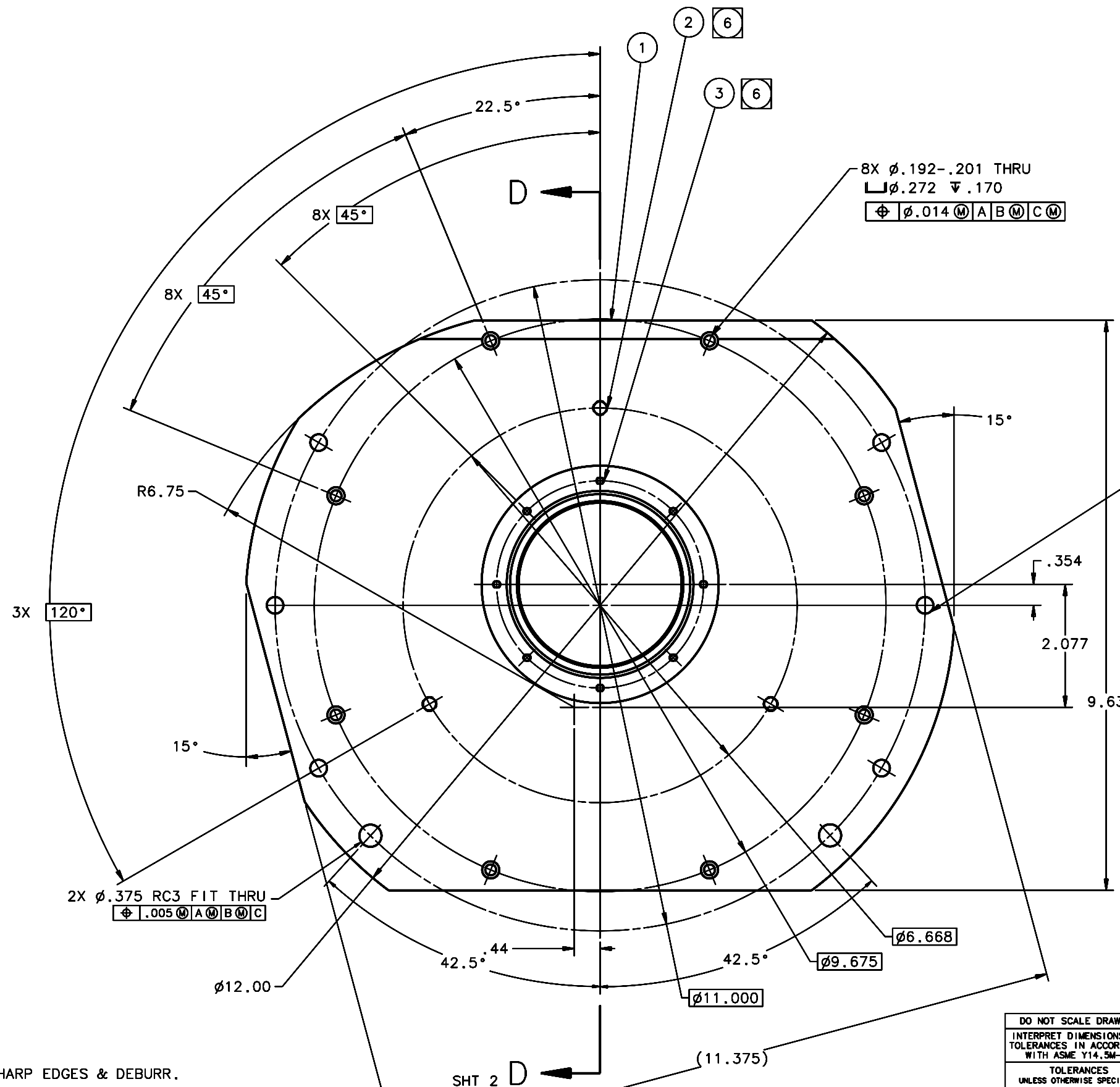


REVISIONS				
LTR	DESCRIPTION	DATE	REVISED BY	APPROVED
A	INITIAL RELEASE	04/26/05	J. BRENNAN	G. LANDIS



8X ø.192-.201 THRU
 ø.272 ∇ .170
 Ⓢ ø.014 (M) A B (M) C (M)

6X ø.278-.287 THRU
 Ⓢ ø.014 (M) A B (M) C (M)

2X ø.375 RC3 FIT THRU
 Ⓢ .005 (M) A (M) B (M) C

QTY PER ASSY	PART NUMBER	PART DESCRIPTION	MANUFACTURER of MAT'L SPEC	ITEM NO.
3	90247A008	INSERT (SELF LOCKING) (.138-.32)	18-8 S'STL	3
3	90247A012	INSERT (SELF LOCKING) (.25-.20)	18-8 S'STL	2
1		DEWAR PLATE NEW		1

LIST OF MATERIALS
 Steward Observatory, University of Arizona
 933 N. Cherry Avenue, Tucson, AZ 85721 (520)621-7659

DO NOT SCALE DRAWING	THIS DRAWING CREATED IN:
INTERPRET DIMENSIONS AND TOLERANCES IN ACCORDANCE WITH ASME Y14.5M-94	ACAD <input type="checkbox"/> MECH <input type="checkbox"/> IDEAS <input checked="" type="checkbox"/>
TOLERANCES UNLESS OTHERWISE SPECIFIED	
LINEAR	ANGULAR
.X = ±	± 1°
.XX = ±.02	
.XXX = ±.005	
DIAMETRICAL SEE SPEC S-002	
MATERIAL	
AL ALLOY 6061-T6	14476 MMT-MAESTRO
FINISH	NEXT ASSY USED ON
4	
ASSEMBLY APPLICATION	

DESIGNED BY: D. DEAN	DATE: 12/03/03	CATEGORY: MMT
DRAWN BY: R. NORFLEET	DATE: 06/22/04	PROJECT: MAESTRO
CHECKED BY: G. LANDIS	DATE: 03/21/05	TITLE: DEWAR PLATE NEW
APPROVED: J. BECHTOLD	DATE: 04/26/05	
APPROVED: R. WARNER	DATE: 04/26/05	
APPROVED:		PLOT SIZE SCALE: D -
APPROVED:		DRAWING NUMBER: 13947
APPROVED:		REVISION: A

- NOTES:
1. BREAK SHARP EDGES & DEBURR.
 2. MACHINED SURFACE FINISH TO BE 125 RMS.
 3. MACHINED FILLETS TO BE .015 MAX.
 - 4 ANODIZE PER MIL-A-8625, TYPE II, CLASS 2 - BLACK.
 - 6 PREPARE HOLES AND INSTALL PER MANUFACTURERS SPECIFICATIONS.

SCALE 1:1