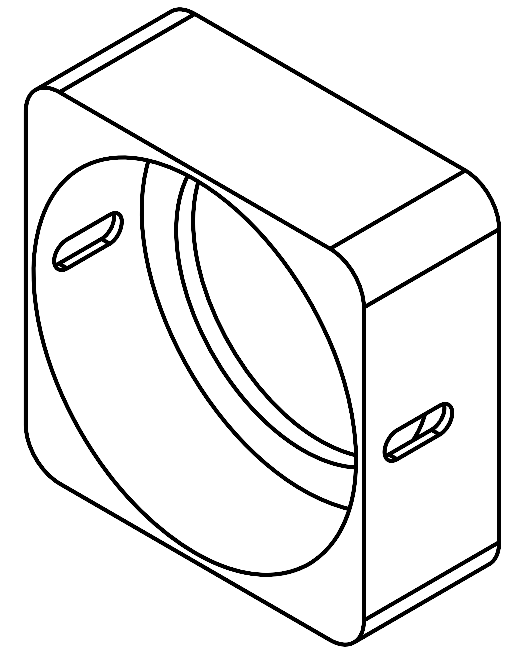
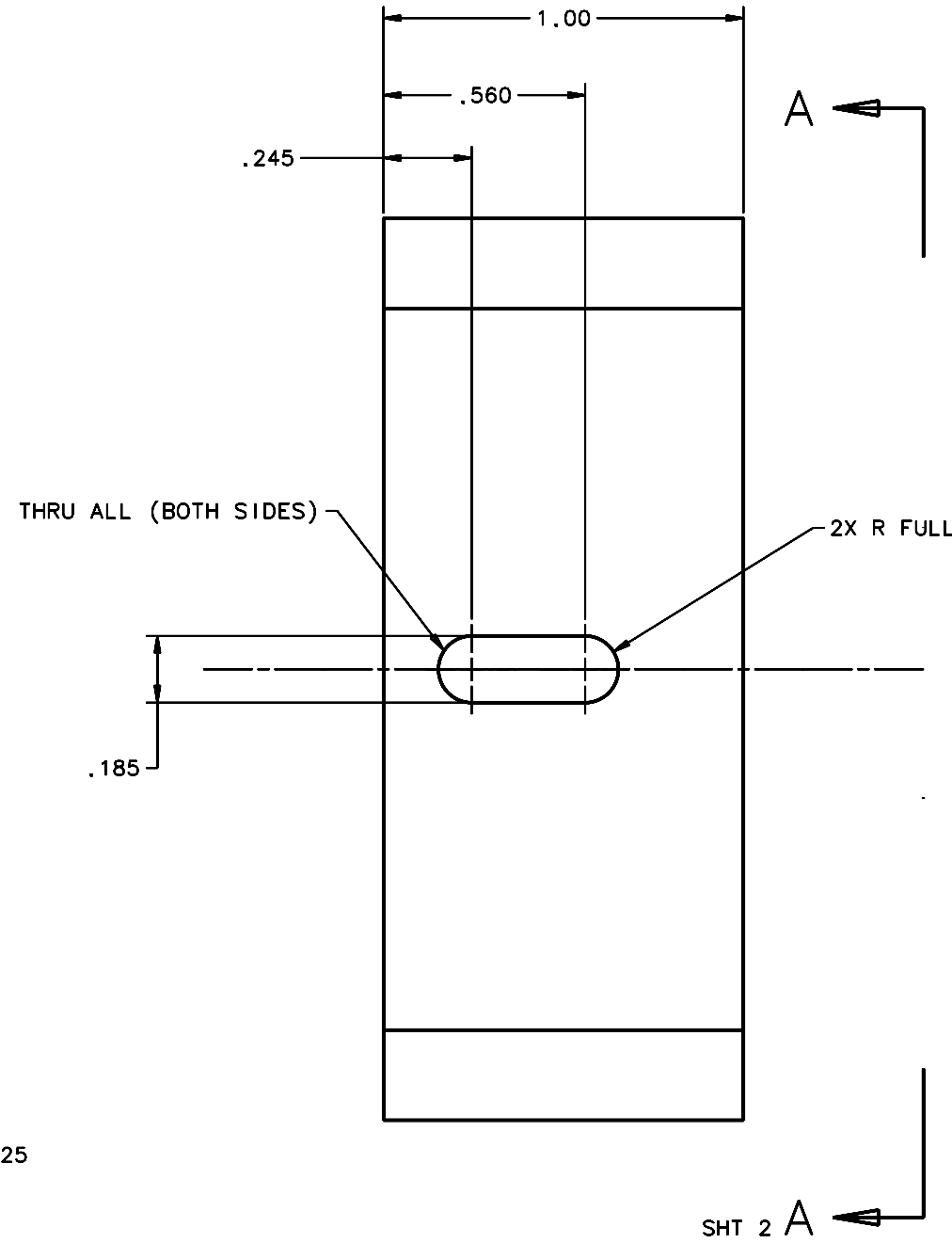
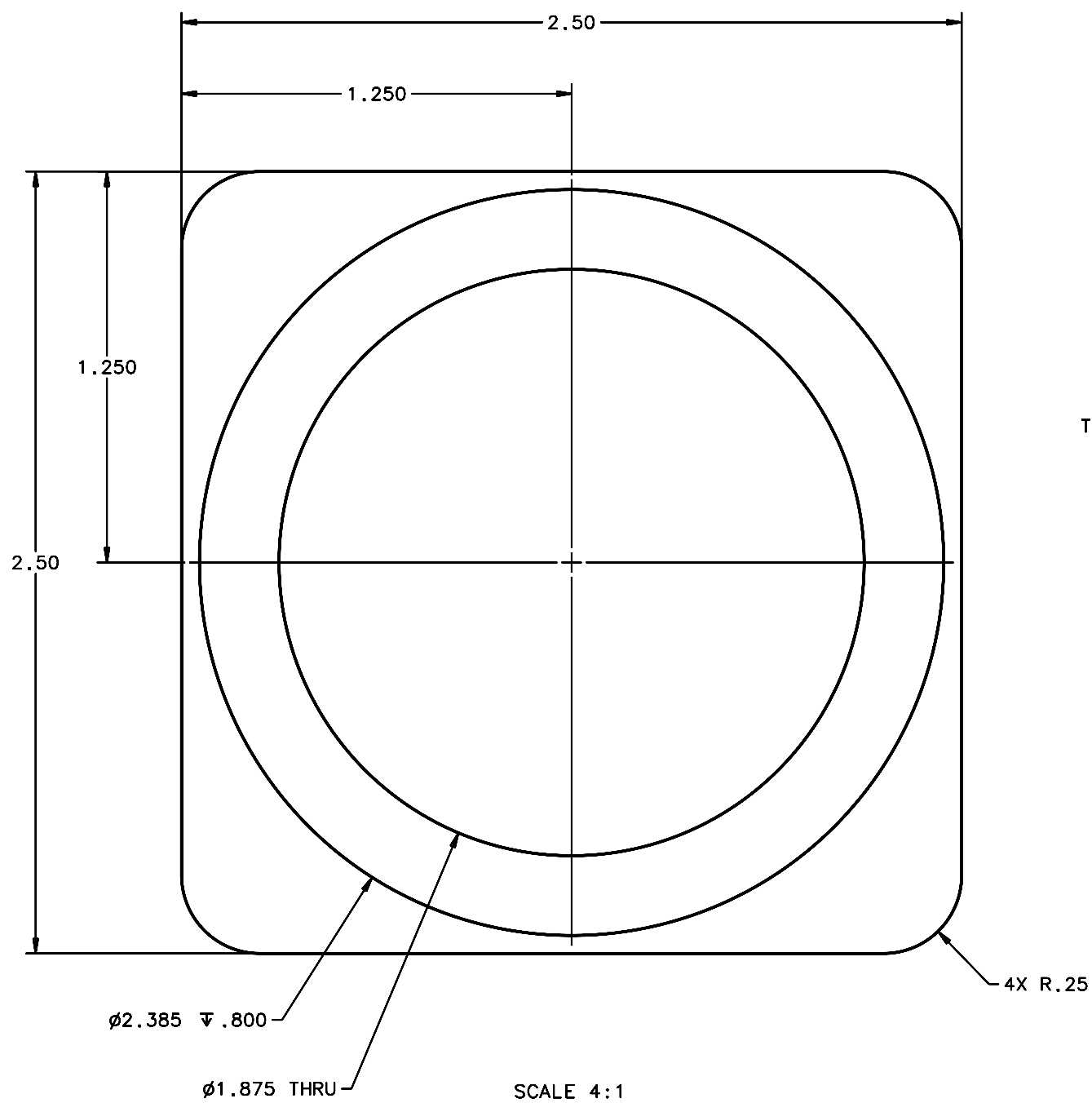


REVISIONS				
LTR	DESCRIPTION	DATE	REVISED BY	APPROVED
A	INITIAL RELEASE	04/28/05	J. BRENNAN	G. LANDIS



- 1 REQUIRED
- NOTES:
1. BREAK SHARP EDGES & DEBURR.
  2. MACHINED SURFACE FINISH TO BE 125 RMS OR BETTER.
  3. MACHINED FILLETS TO BE .015 MAX.
  4. ANODIZE PER MIL-A-8625, TYPE II, CLASS 2 - BLACK.
  5. ALL DIMENSIONS APPLICABLE BEFORE ANODIZING.

DO NOT SCALE DRAWING		THIS DRAWING CREATED IN:		Steward Observatory, University of Arizona		
INTERPRET DIMENSIONS AND TOLERANCES IN ACCORDANCE WITH ASME Y14.5M-94		ACAD	MECH	IDEAS	933 N. Cherry Avenue, Tucson, AZ 85721 (520)621-7659	
TOLERANCES UNLESS OTHERWISE SPECIFIED		<input type="checkbox"/>	<input type="checkbox"/>	<input checked="" type="checkbox"/>	DESIGNED BY: D. DEAN	DATE: 01/18/05
LINEAR					DRAWN BY: R. ABALDO	01/18/05
ANGULAR					CHECKED BY: G. LANDIS	03/21/05
.X = ±					APPROVED: M. REED	04/28/05
.XX = ±.02					APPROVED: J. BECHTOLD	04/28/05
.XXX = ±.005					APPROVED: R. WARNER	04/28/05
DIAMETRICAL						
SEE SPEC S-002						
MATERIAL		14449	MMT-MAESTRO		PROJECT: MAESTRO	
AL ALLOY 6061-T6					TITLE: CALIBRATION DIAGONAL MIRROR DIFFUSER MOUNT	
FINISH 4		NEXT ASSY	USED ON		PLOT SIZE SCALE: D -	DRAWING NUMBER: 14519
ASSEMBLY APPLICATION						REVISION: A
		CURRENT TIME/DATE/FILE LOCATION:				
		DRAWING ARCHIVE LOCATION: http://dovinc1.as.arizona.edu/ccod/default.html				
						SHEET 1 OF 2