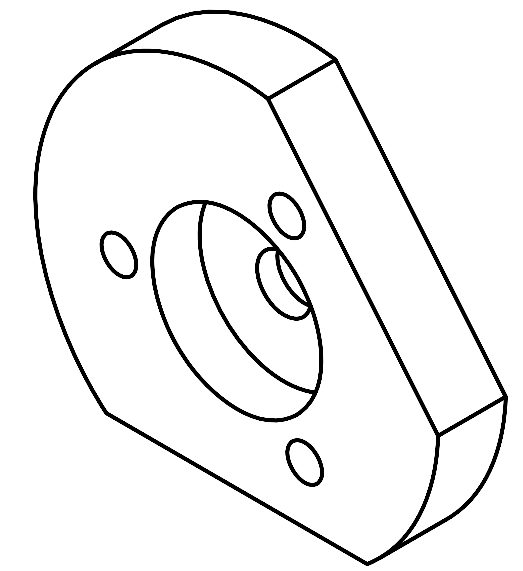
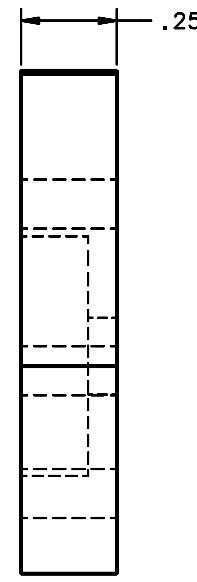
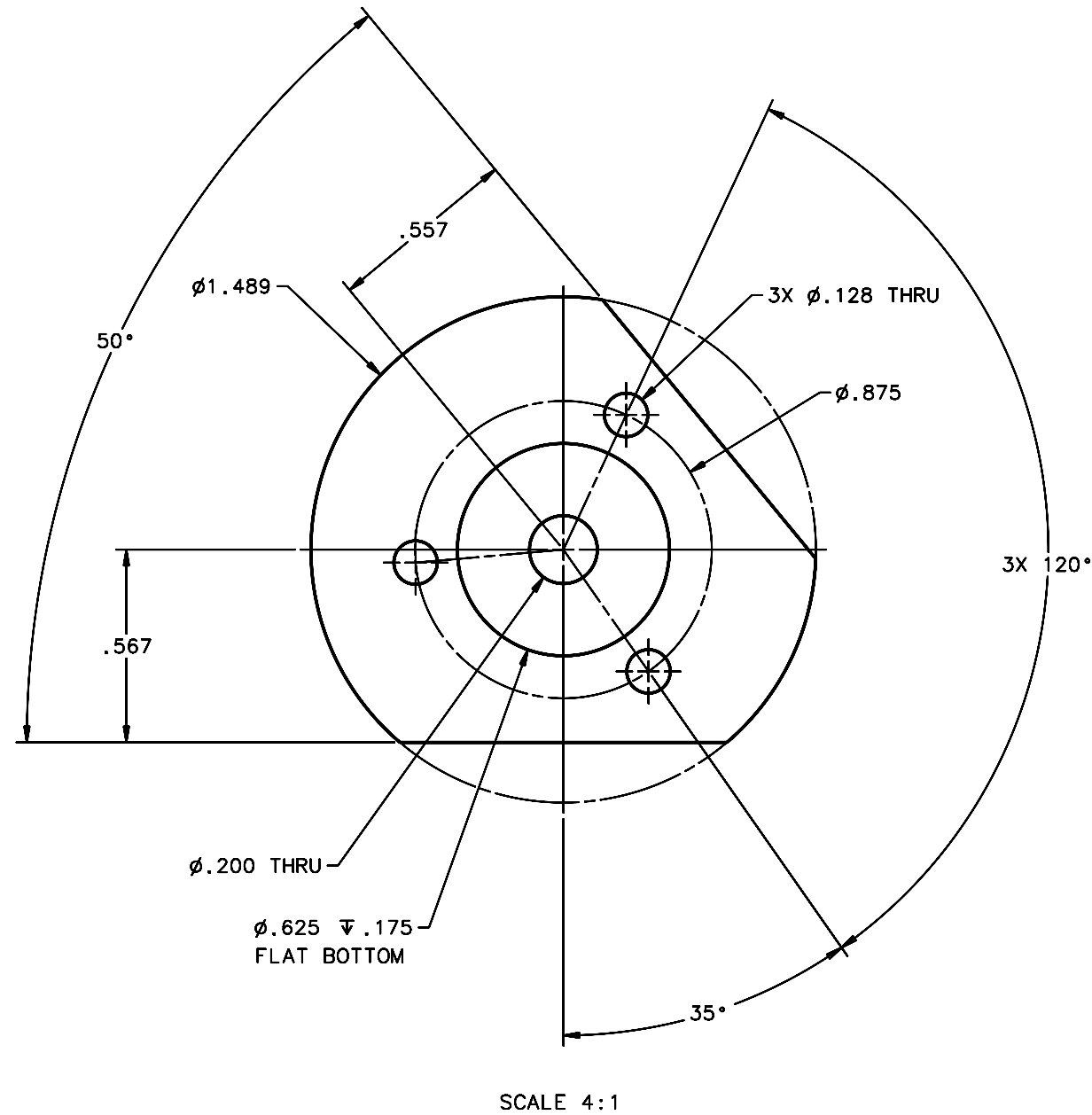


REVISIONS				
LTR	DESCRIPTION	DATE	REVISED BY	APPROVED
A	INITIAL RELEASE	04/28/05	J. BRENNAN	G. LANDIS



- 1 REQUIRED
- NOTES:
- BREAK SHARP EDGES & DEBURR.
 - MACHINED SURFACE FINISH TO BE 125 RMS OR BETTER.
 - MACHINED FILLETS TO BE .015 MAX.
 - ANODIZE PER MIL-A-8625, TYPE II, CLASS 2 - BLACK.
 - ALL DIMENSIONS APPLICABLE BEFORE ANODIZING.

DO NOT SCALE DRAWING		THIS DRAWING CREATED IN:			Steward Observatory, University of Arizona 933 N. Cherry Avenue, Tucson, AZ 85721 (520)621-7659					
INTERPRET DIMENSIONS AND TOLERANCES IN ACCORDANCE WITH ASME Y14.5M-94		ACAD	MECH	IDEAS	DESIGNED BY: D. DEAN	DATE: 12/13/04	CATEGORY: MMT			
TOLERANCES UNLESS OTHERWISE SPECIFIED		<input type="checkbox"/>	<input type="checkbox"/>	<input checked="" type="checkbox"/>	DRAWN BY: R. ABALDO	12/13/04	PROJECT: MAESTRO			
LINEAR					CHECKED BY: G. LANDIS	03/21/05	TITLE: CALIBRATION TURN DOWN MIRROR PLATE			
ANGULAR					APPROVED: M. REED	04/28/05				
.X = ± .02					APPROVED: J. BECHTOLD	04/28/05				
.XX = ± .005					APPROVED: R. WARNER	04/28/05				
.XXX = ± .005					APPROVED:					
DIAMETRICAL SEE SPEC S-002										
MATERIAL AL ALLOY 6061-T6		14452	MMT-MAESTRO				PLOT SIZE SCALE: D -		DRAWING NUMBER: 14471	REVISION: A
FINISH 4			NEXT ASSY	USED ON	CURRENT TIME/DATE/FILE LOCATION: DRAWING ARCHIVE LOCATION: http://dovinc1.es.arizona.edu/ocod/default.html					
ASSEMBLY APPLICATION					SHEET 1 OF 1					