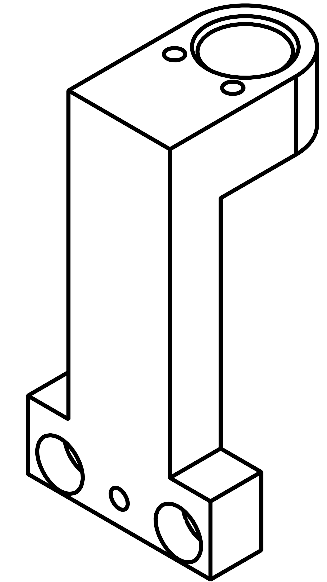
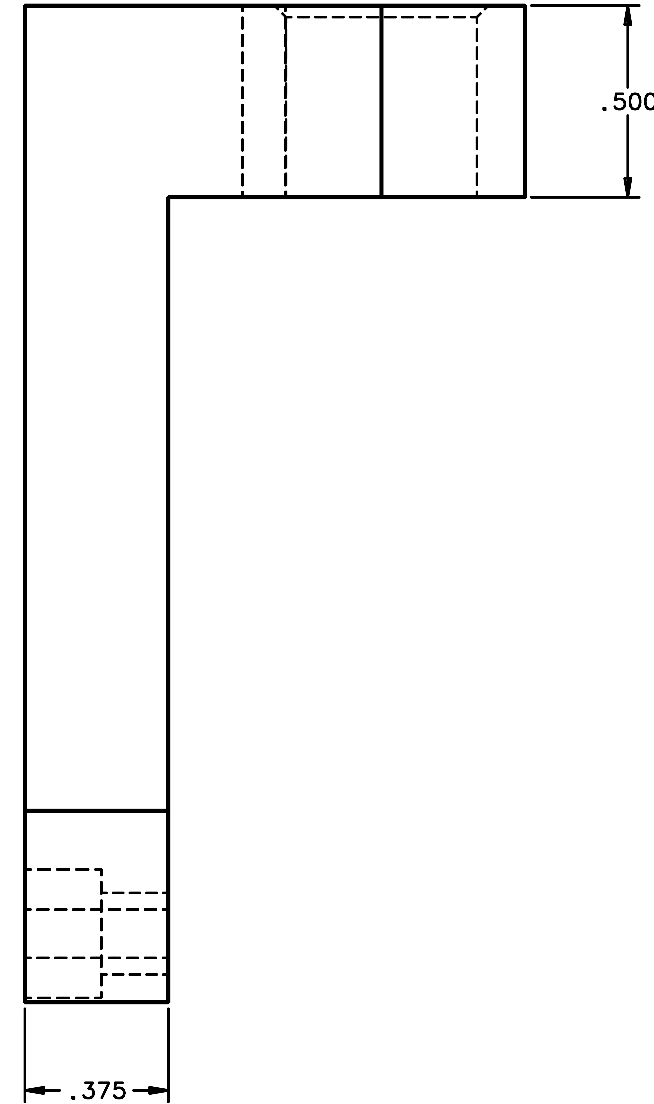
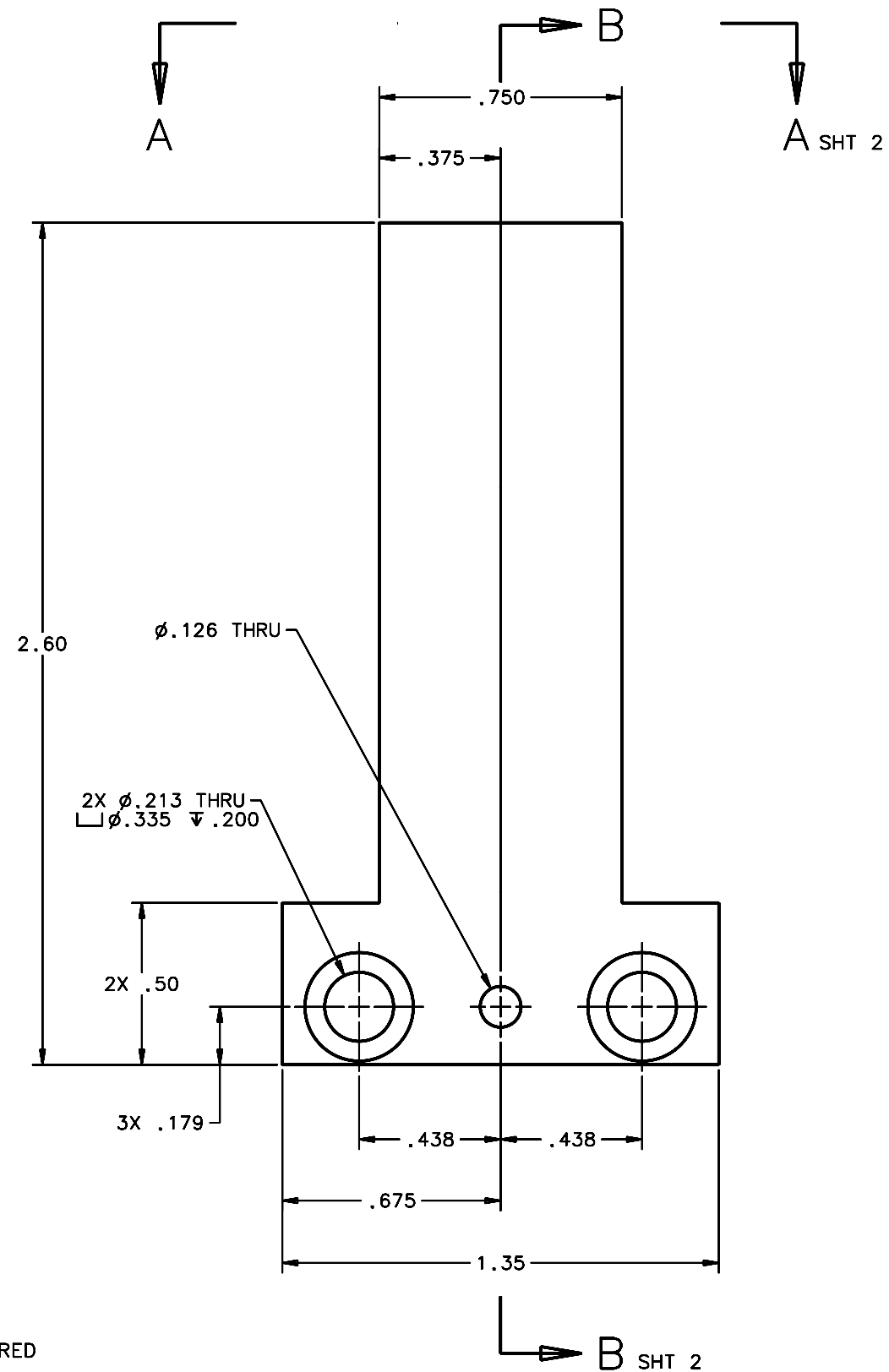


REVISIONS				
LTR	DESCRIPTION	DATE	REVISED BY	APPROVED
A	INITIAL RELEASE	04/28/05	J. BRENNAN	G. LANDIS



1 REQUIRED

NOTES:

1. BREAK SHARP EDGES & DEBURR.
2. MACHINED SURFACE FINISH TO BE 125 RMS OR BETTER.
3. MACHINED FILLETS TO BE .015 MAX.
- ④ ANODIZE PER MIL-A-8625, TYPE II, CLASS 2 - BLACK.
5. ALL DIMENSIONS APPLICABLE BEFORE ANODIZING.
- ⑥ MEASURE O.D. OF THE UNTHREADED ROUND SPACER (PART 24) TO APPLY LN1 FIT.

B SHT 2

DO NOT SCALE DRAWING		THIS DRAWING CREATED IN:			Steward Observatory, University of Arizona		
INTERPRET DIMENSIONS AND TOLERANCES IN ACCORDANCE WITH ASME Y14.5M-94		ACAD	MECH	IDEAS	933 N. Cherry Avenue, Tucson, AZ 85721 (520)621-7659		
TOLERANCES UNLESS OTHERWISE SPECIFIED		<input type="checkbox"/>	<input type="checkbox"/>	<input checked="" type="checkbox"/>	DESIGNED BY: D. DEAN	DATE: 12/13/04	CATEGORY: MMT
LINEAR					DRAWN BY: R. ABALDO	12/13/04	PROJECT: MAESTRO
ANGULAR					CHECKED BY: G. LANDIS	03/21/05	TITLE:
.X = ± .02					APPROVED: M. REED	04/28/05	CALIBRATION TURN DOWN MIRROR PIVOT POST PLATE
.XXX = ± .005					APPROVED: J. BECHTOLD	04/28/05	
DIAMETRICAL SEE SPEC S-002					APPROVED: R. WARNER	04/28/05	
MATERIAL AL ALLOY 6061-T6		14452	MMT-MAESTRO		APPROVED:		PLOT SIZE SCALE: D -
FINISH ④		NEXT ASSY	USED ON		ASSEMBLY APPLICATION		DRAWING NUMBER: 14470
					CURRENT TIME/DATE/FILE LOCATION:		
					DRAWING ARCHIVE LOCATION: <a href="http://dov.incl.us.arizona.edu/ocod/default.html">http://dov.incl.us.arizona.edu/ocod/default.html</a>		
							REVISION: A
							SHEET 1 OF 2