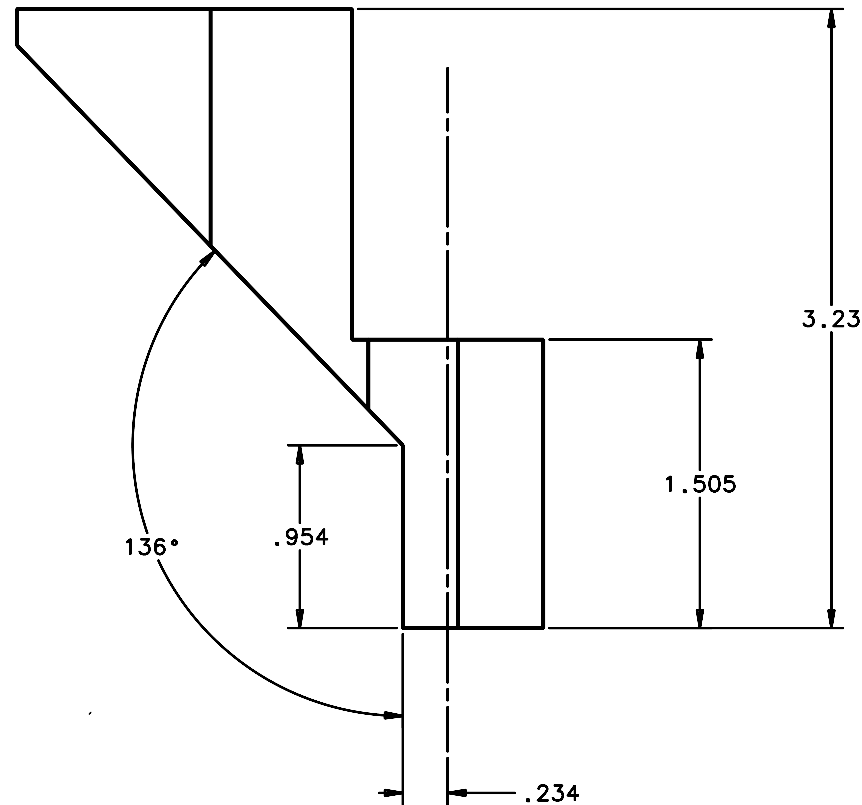
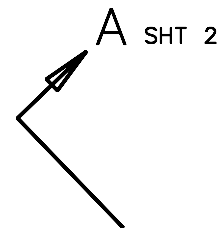
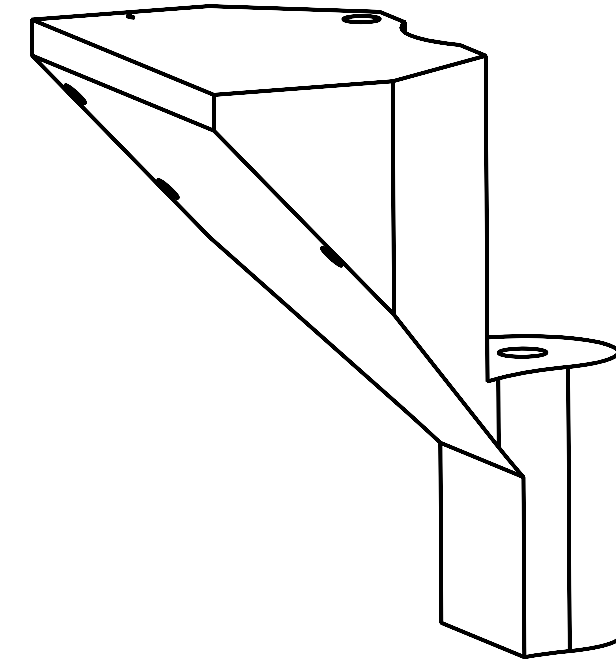
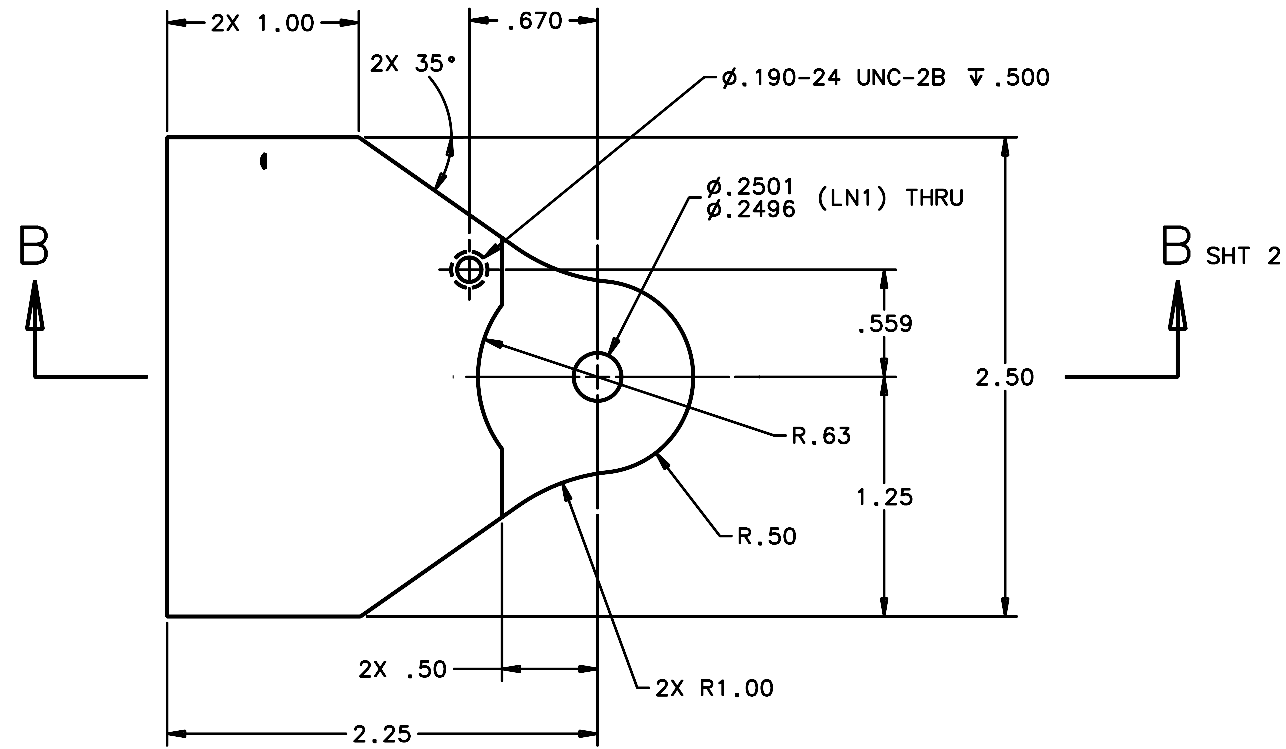


REVISIONS				
LTR	DESCRIPTION	DATE	REVISED BY	APPROVED
A	INITIAL RELEASE	04/28/05	J. BRENNAN	G. LANDIS



SCALE 2:1

1 REQUIRED

NOTES:

- BREAK SHARP EDGES & DEBURR.
- MACHINED SURFACE FINISH TO BE 125 RMS OR BETTER.
- MACHINED FILLETS TO BE .015 MAX.
- ANODIZE PER MIL-A-8625, TYPE II, CLASS 2 - BLACK.
- ALL DIMENSIONS APPLICABLE BEFORE ANODIZING.

DO NOT SCALE DRAWING INTERPRET DIMENSIONS AND TOLERANCES IN ACCORDANCE WITH ASME Y14.5M-94		THIS DRAWING CREATED IN: ACAD <input type="checkbox"/> MECH <input type="checkbox"/> IDEAS <input checked="" type="checkbox"/>		Steward Observatory, University of Arizona 933 N. Cherry Avenue, Tucson, AZ 85721 (520)621-7659	
TOLERANCES UNLESS OTHERWISE SPECIFIED LINEAR .X = ± .02 .XX = ± .005 ANGULAR ± 1° DIAMETRICAL SEE SPEC S-002		DESIGNED BY: D. DEAN	DATE: 12/13/04	CATEGORY: MMT	
MATERIAL AL ALLOY 6061-T6		DRAWN BY: R. ABALDO	12/13/04	PROJECT: MAESTRO	
FINISH 4		CHECKED BY: G. LANDIS	03/21/05	TITLE: CALIBRATION TURN DOWN MIRROR MOUNT	
ASSEMBLY APPLICATION		APPROVED: M. REED	04/28/05	DRAWING NUMBER: 14468	
		APPROVED: J. BECTOLD	04/28/05	REVISION: A	
		APPROVED: R. WARNER	04/28/05	PLOT SIZE SCALE: D -	
		CURRENT TIME/DATE/FILE LOCATION:			SHEET 1 OF 2
		DRAWING ARCHIVE LOCATION: http://dovinc1.es.arizona.edu/ccod/default.html			