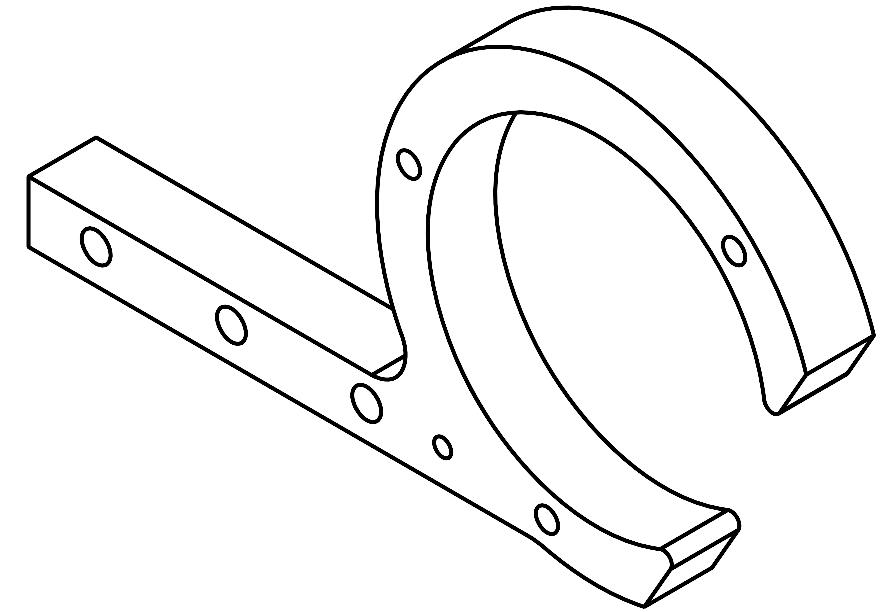
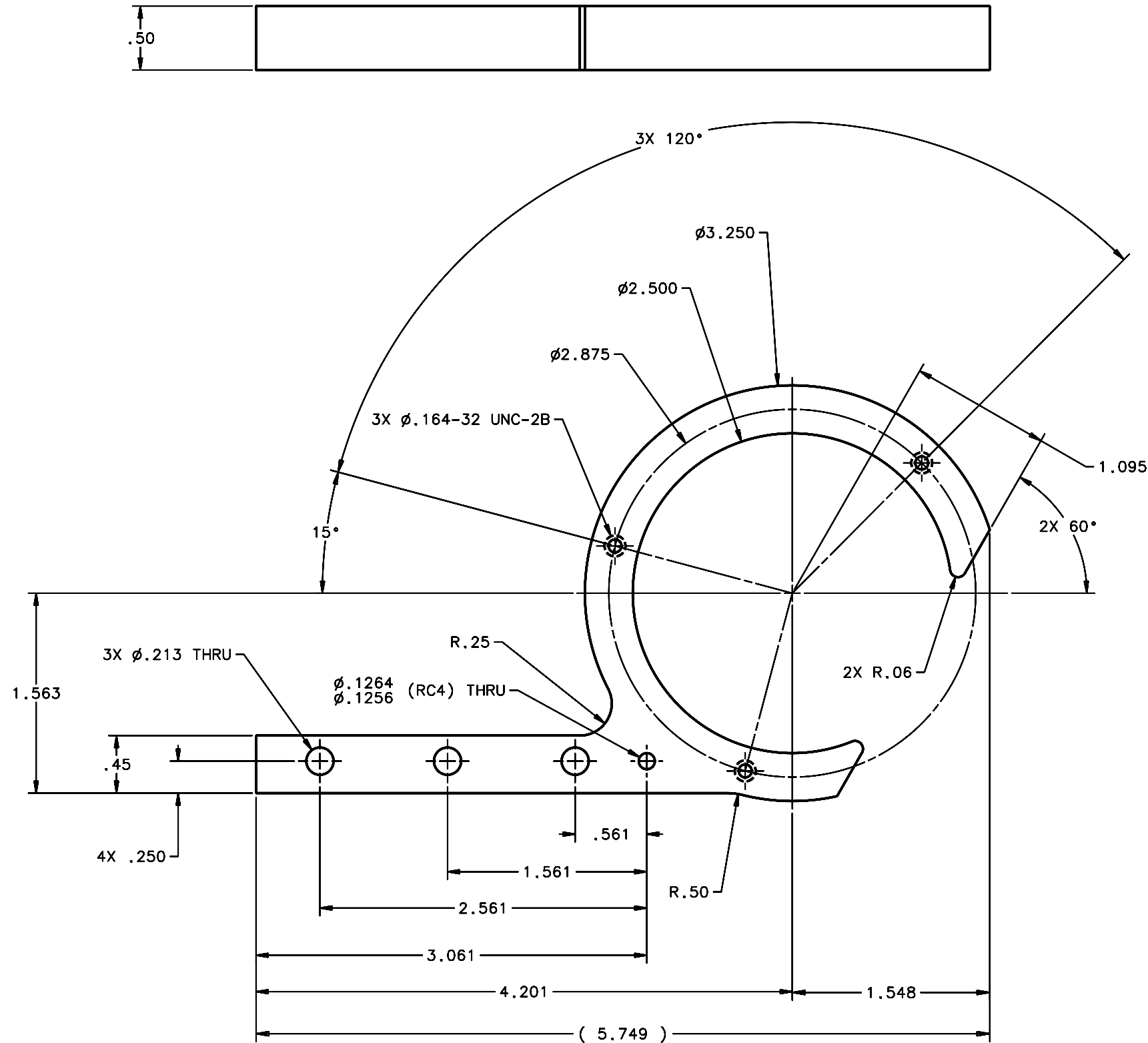


REVISIONS				
LTR	DESCRIPTION	DATE	REVISED BY	APPROVED
A	INITIAL RELEASE	04/28/05	J. BRENNAN	G. LANDIS



1 REQUIRED

NOTES:

- BREAK SHARP EDGES & DEBURR.
- MACHINED SURFACE FINISH TO BE 125 RMS OR BETTER.
- MACHINED FILLETS TO BE .015 MAX.
- ANODIZE PER MIL-A-8625, TYPE II, CLASS 2 - BLACK.
- ALL DIMENSIONS APPLICABLE BEFORE ANODIZING.

SCALE 2:1

DO NOT SCALE DRAWING		THIS DRAWING CREATED IN:		Steward Observatory, University of Arizona	
INTERPRET DIMENSIONS AND TOLERANCES IN ACCORDANCE WITH ASME Y14.5M-94		ACAD	MECH	IDEAS	933 N. Cherry Avenue, Tucson, AZ 85721 (520)621-7659
TOLERANCES UNLESS OTHERWISE SPECIFIED		<input type="checkbox"/>	<input type="checkbox"/>	<input checked="" type="checkbox"/>	DESIGNED BY: D. DEAN
LINEAR					DATE: 12/13/04
ANGULAR					CATEGORY: MMT
.X = ±					DRAWN BY: R. ABALDO
.XX = ±.02					DATE: 12/13/04
.XXX = ±.005					CHECKED BY: G. LANDIS
DIAMETRICAL					DATE: 03/21/04
SEE SPEC S-002					APPROVED: M. REED
MATERIAL					DATE: 04/28/04
AL ALLOY 6061-T6		14452	MMT-MAESTRO		APPROVED: J. BECHTOLD
FINISH					DATE: 04/28/05
4		NEXT ASSY	USED ON		APPROVED: R. WARNER
ASSEMBLY APPLICATION					DATE: 04/28/05
CURRENT TIME/DATE/FILE LOCATION:		PLOT SIZE SCALE:		DRAWING NUMBER:	REVISION:
DRAWING ARCHIVE LOCATION: http://dovinc1.as.arizona.edu/ccod/default.html		D -		14467	A
					SHEET 1 OF 1